

SUNSET BAY 5

AT DUBAI ISLANDS

IMTIAZ

YOUR GATEWAY TO *Island Living*

Island living is a return to rhythm, where the days move with the tide, and life is measured in moments, not minutes. Surrounded by sea, sky, and stillness, Sunset Bay 5 offers a lifestyle defined by ease and clarity. From barefoot mornings to golden hour walks by the shore, your home allows you to slow down, breathe deeper, and savour the beauty of simplicity.

An architectural rendering of the Sunset Bay 5 building, a tall, modern structure with a distinctive design. The building features a series of cantilevered balconies that create a stepped, terraced appearance. Each balcony is adorned with lush greenery, including palm trees and other tropical plants. The building's facade is a mix of light-colored panels and large glass windows. At the top, the name 'IMTIAZ' is displayed in large, gold-colored letters. The building is set against a clear blue sky with a few wispy clouds. In the foreground, there is a paved area with some greenery and a few people walking. To the right, another building with a glass facade is visible, partially obscured by trees. The overall scene is bright and sunny, suggesting a coastal or island setting.

A LANDMARK CARVED IN ELEGANCE

Set against the vastness of Dubai Islands, Sunset Bay 5 appears as a seamless extension of its setting, elegant, quiet, and coastal at heart. Every line and angle is designed to honour the view and the life that unfolds within it.

SUNSET BAY 5 | AT DUBAI ISLANDS

A STORY OF A LIFE WELL-LIVED

At Sunset Bay 5, life unfolds like a story told in quiet chapters, with sunlit spaces, refined materials, and moments framed by the sea. Every corner is crafted with purpose, and every finish is chosen with care. This is not just a home, but a narrative of elegance, comfort, and presence, written for those who live with intention and leave a legacy in the details.

A SHORELINE MEANT FOR MOMENTS

The shoreline stretches gently beneath your feet, water weaving between footsteps and laughter. In this moment, unrushed and untouched by time, life reveals its quieter joys. Sunset Bay 5 offers not just proximity to the sea, but closeness to what matters most: family, presence, and the beauty of simply being.

SUNSET BAY 5 | AT DUBAI ISLANDS



SUNSET BAY 5

YOUR GATEWAY TO ISLAND LIVING

SUNSET BAY 5 | AT DUBAI ISLANDS

MINUTES *Away*

Every aspect of Sunset Bay 5 is a quiet celebration of craft and refinement. From world-renowned finishes to expansive spaces bathed in natural light, this home is designed to be felt as much as seen. Here, elegance isn't displayed; it's experienced in the textures you touch, the views you wake up to, and the calm that lasts long after you arrive.

**DOWNTOWN
DUBAI**

OPERA GALLERY



DIFC



DUBAI MALL



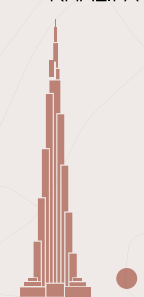
JUMEIRAH

Kite Beach

DUBAI

SHEIKH ZAYED ROAD

AL KHAIL ROAD



Downtown Dubai

Dubai Mall

DWTC

DIFC

Jumeirah Mosque
La Mer Beach



Dubai Frame

DUBAI ISLANDS

SUNSET BAY 5

Mall by Nakheel

Hyatt Regency

Waterfront Market

DEIRA

DUBAI CREEK

Ras Al Khor Wildlife Sanctuary

AL AIN - DUBAI ROAD



DUBAI INTERNATIONAL AIRPORT

SHEIKH MOHAMMED BIN ZAYED ROAD

YOUR WINDOW TO THE *Horizon*

SUNSET BAY 5 | AT DUBAI ISLANDS

YOUR GATEWAY TO ISLAND LIVING

BREATHING IN THE *Opulence*

Luxury isn't announced—it's absorbed. Every element at Sunset Bay 5 is chosen with quiet precision, from European-crafted finishes to layered textures that soften each space. Light moves effortlessly across sculpted interiors, while panoramic views extend the sense of calm. This is a home not just built to impress, but to be felt—deeply, effortlessly, every day.



SUNSET BAY 5 | AT DUBAI ISLANDS

YOUR GATEWAY TO ISLAND LIVING

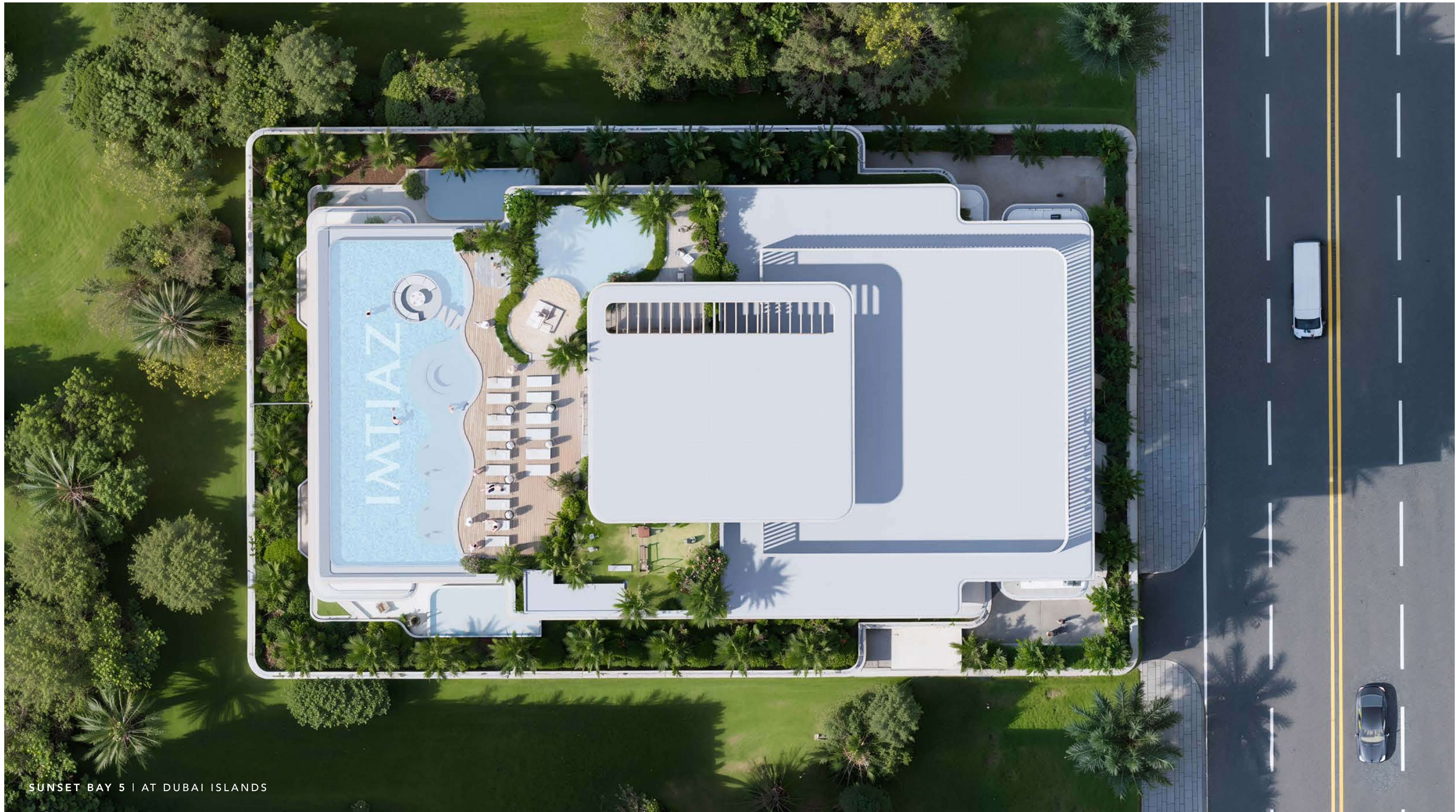
LANDMARK OF *Elegance*

Sunset Bay 5 rises with quiet confidence along the shoreline, its architecture shaped by balance, simplicity, and light. From afar, it stands as a landmark of understated elegance; up close, a testament to timeless design.



SUNSET BAY 5 | AT DUBAI ISLANDS

YOUR GATEWAY TO ISLAND LIVING



SUNSET BAY 5 | AT DUBAI ISLANDS

STUPENDOUS

Infinity

SUNSET BAY 5 | AT DUBAI ISLANDS

YOUR GATEWAY TO ISLAND LIVING





CLUBHOUSE

SUNSET BAY 5 | AT DUBAI ISLANDS

YOUR GATEWAY TO ISLAND LIVING

BETWEEN
WAVE
and SOLITUDE

There are moments that ask for nothing but your presence, no noise, no urgency, just the quiet rhythm of the sea and the stillness within. Here, surrounded by an open sky and endless water, reflection comes easily. It's a space to pause, breathe, and simply be.



 FITNESS
IS NOT A DESTINATION
IT IS A WAY OF LIFE



YOUR GATEWAY TO ISLAND LIVING



UNFOLDING
INTO SKY
ANCHORED IN CALM

Extended with purpose, the balcony opens fully to the horizon. It's where your home exhales into views, into silence, into the moment. Sunset Bay 5 invites you to live not just within your walls, but beyond them.

SUNSET BAY 5 | AT DUBAI ISLANDS

YOUR GATEWAY TO ISLAND LIVING





SUNSET BAY 5 | AT DUBAI ISLANDS

LOBBY

YOUR GATEWAY TO ISLAND LIVING

BRANDED FEATURES



STEPS AWAY FROM THE
BEACH



PROXIMITY TO PREMIER
MALLS



FULLY FURNISHED WITH
BESPOKE INTERIORS



EV CHARGING
STATION



STEPS AWAY FROM
PARKS

Miele

BOSCH

CASAMIA

alexa

SUNSET BAY 5 | AT DUBAI ISLANDS

YOUR GATEWAY TO ISLAND LIVING



LIVING ROOM

SUNSET BAY 5 | AT DUBAI ISLANDS



BEDROOM

SUNSET BAY 5 | AT DUBAI ISLANDS



WARDROBE



SUNSET BAY 5 | AT DUBAI ISLANDS



KITCHEN AREA



WORLD CLASS

Amenities



OUTDOOR DINING /
BBQ AREA



OUTDOOR
SEATING



KIDS'
PLAYGROUND



PRIVATE
TERRACE



CLUBHOUSE



JACUZZI



ROOFTOP
INFINITY POOL



OUTDOOR
SHOWER



SUNKEN
LOUNGE



PING PONG
TABLE



FULLY
EQUIPPED GYM



CHANGING
ROOMS



IMTIAZ

A JOURNEY TO PERFECTION

imtiaz.ae | info@imtiaz.ae
800 IMTIAZ (468429)