

# CREEK PALACE

DUBAI CREEK HARBOUR

BY ADDRESS HOTELS + RESORTS

EMAAR



CREEK PALACE  
DUBAI CREEK HARBOUR

# 5-STAR LUXURY MEETS WATERFRONT LIVING

Find yourself in a branded waterfront home, located next to the Palace hotel and infuse your lifestyle with an array of world-class amenities and 5-star services.



1, 2, 3-bedroom  
Apartments



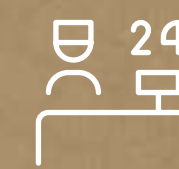
3-bedroom  
Waterfront Villas



10-min Walk to  
Creek Marina



5-min Walk to  
Island Park



24/7  
Concierge Service



Valet  
Parking

5-STAR LIFESTYLE

# AT YOUR BECK AND CALL

---

Creek Palace is adjacent to the Palace hotel, allowing easy access to a world of 5-star services.

Whether you'd like to pamper yourself at the spa or indulge in exceptional gourmet dining, the Palace hotel will give you access to:



On-demand  
Housekeeping  
Services



On-demand  
Hotel Service



Priority Discounts  
at Hotel Facilities

T&Cs Apply





PALACE HOTELS

# KNOWN BY REPUTATION

---

As a part of the portfolio of Address Hotels + Resorts, the award-winning Palace brand perfectly encapsulates Dubai's concept of a lavish and expertly crafted hotel.



BBC Good Food ME Awards 2019  
Best Thai Restaurant in Dubai and  
Northern Emirates - Thiptara



Fact dining awards Dubai 2019  
Favourite Boutique Spa in Dubai



Timeout Dubai Restaurant Awards 2019  
Best Romantic & Best Thai Restaurant -  
Thiptara



5-STAR VIEWS

# ICONIC VIEWS OF DUBAI'S SKYLINE

Be inspired by the exceptional views of the Dubai skyline, from the comfort of your elegant new home in the beating heart of Creek Island.



Burj Khalifa



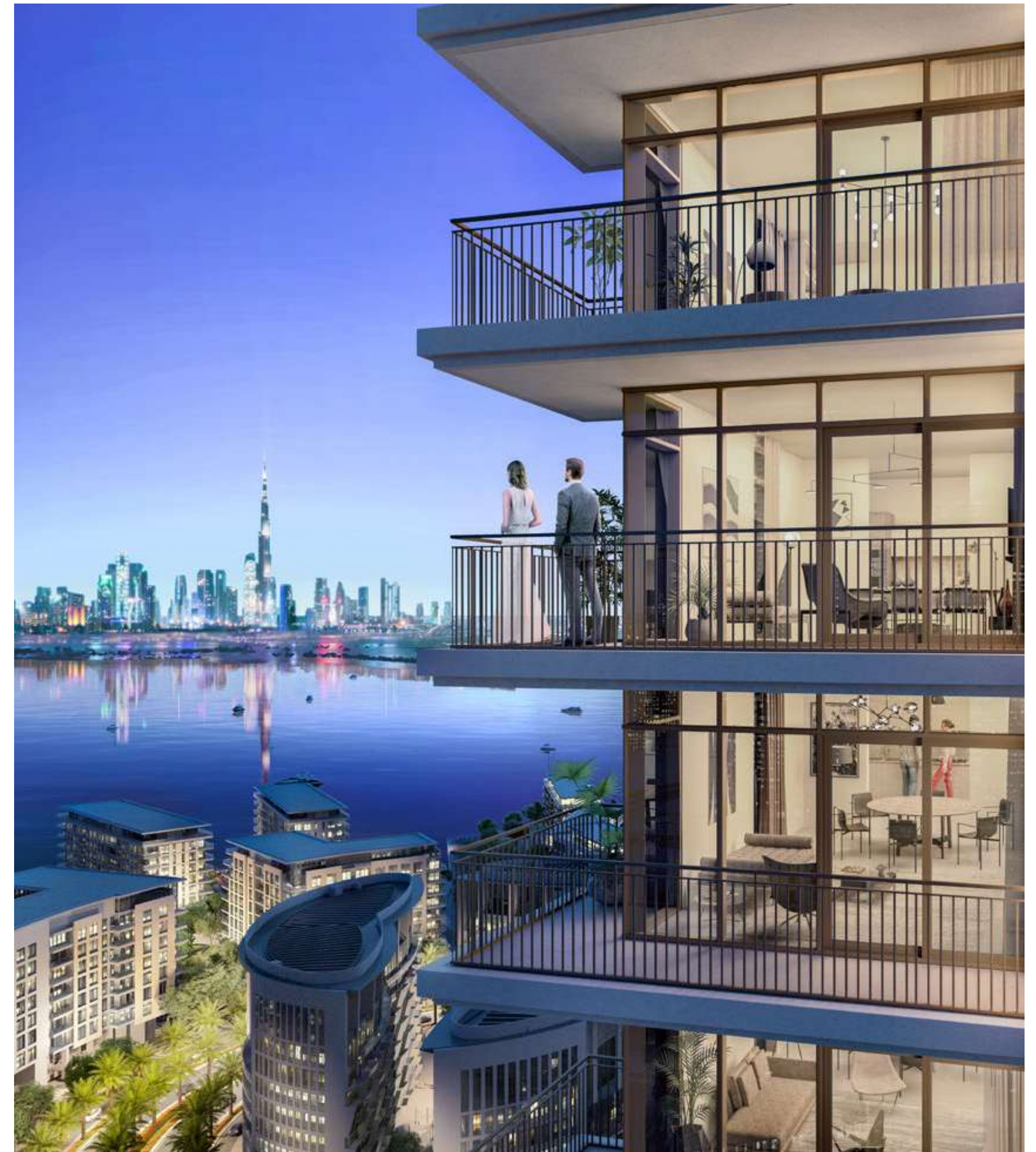
Creek Beach



Creek Canal



Bay Bridge





5-STAR DESIGN

## A HOME THAT EMBODIES ELEGANCE

---

Taking cues from natural elements and combining them with modern design, the luxurious interiors exude an aura of sophistication.





5-STAR LEISURE

# ELEVATE YOUR EVERY DAY

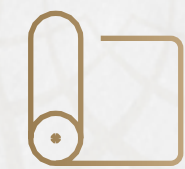
---

Embrace a lifestyle where vibrant living and tranquil calmness converge.

Relax and recharge with a fully-equipped recreational area - roll out your yoga mat as the sun rises over the Burj Khalifa or simply unwind with unique views.



Kids' Play Area  
& Pool



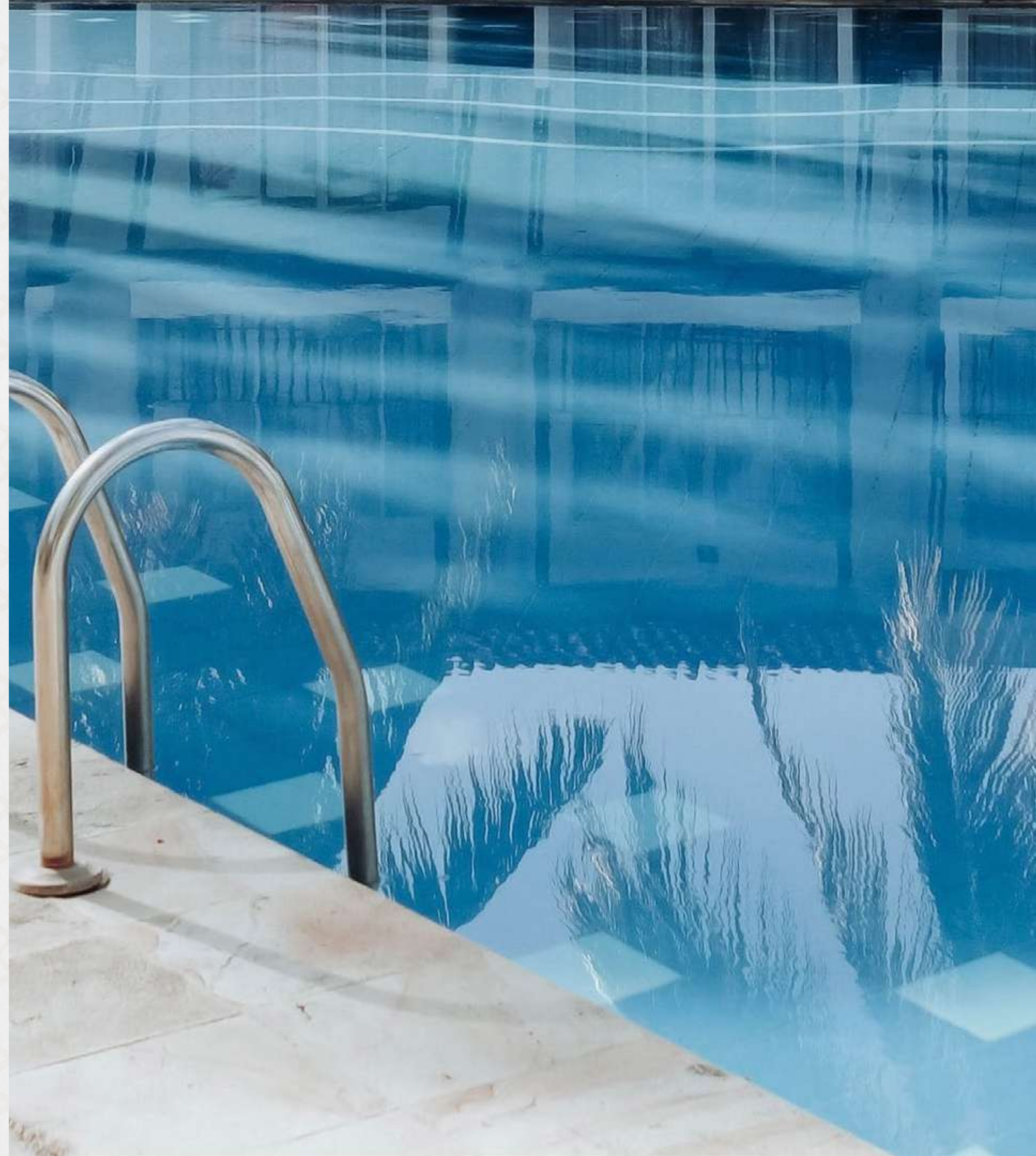
Dedicated  
Yoga Room



Infinity-edge  
Pool



State-of-the-art  
Gym







RETAIL

# A VIBRANT RETAIL FRONT AT YOUR DOORSTEP

---

Step outside your home and find yourself on the vibrant promenade with a selection of retail and dining options. Here you take in the prime views of the waterfront as the walk is right below our Creek Palace villas.



Retail Area  
Bigger than Two  
Tennis Courts



Gourmet  
Dining



Dedicated Lift  
to the Retail Area

LOCATION

# THE HIGHLIGHT OF CREEK ISLAND DUBAI

Experience the island life and yet be close to everything you crave.

The island houses leisure attractions like Creek Marina, Island Park, Creek Quay, and Harbour Promenade, promising family fun in a picturesque setting.



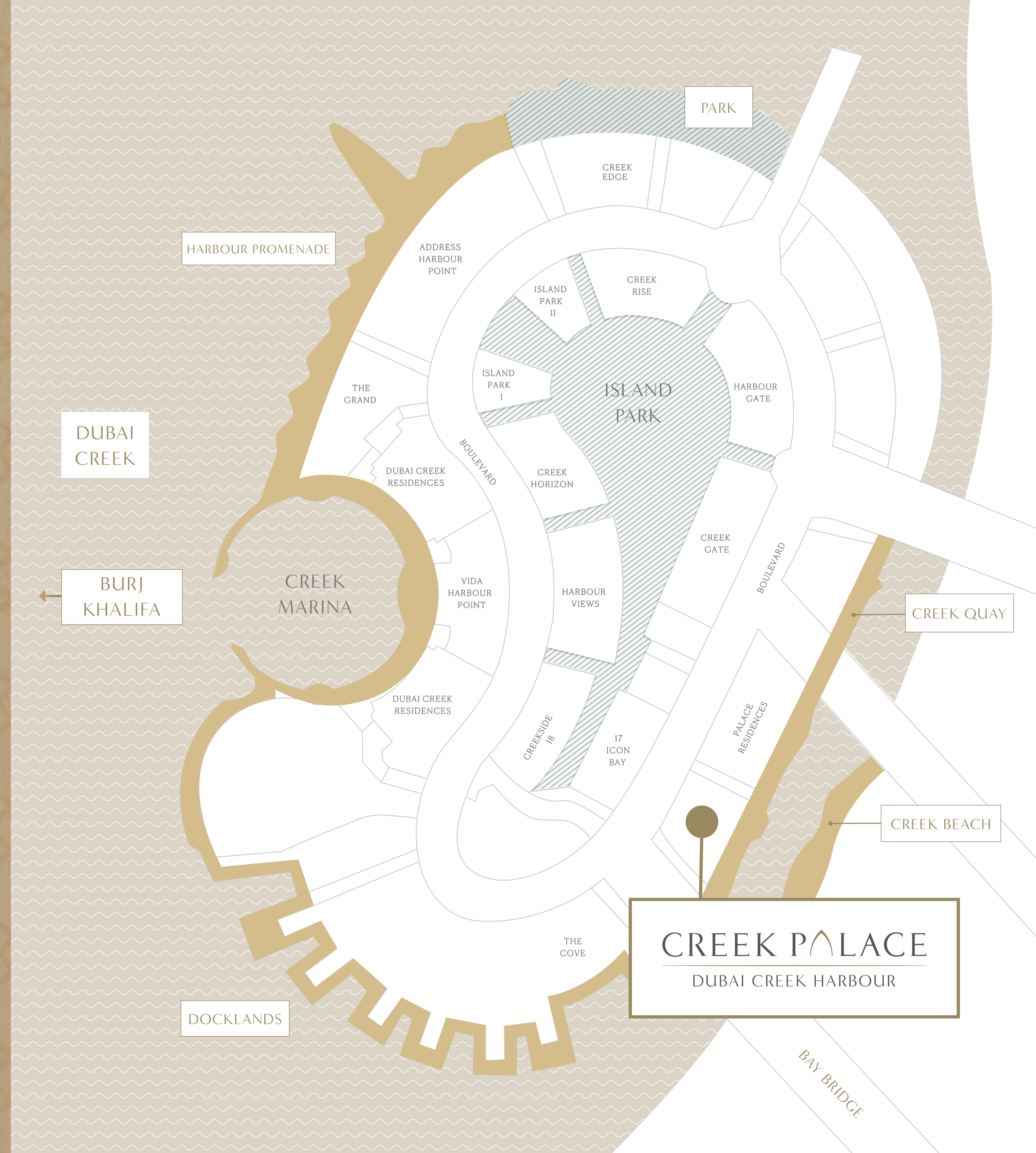
Steps Away from Bay Bridge



Mins Away from Wildlife Sanctuary



3 Hotels in the Vicinity





CREEK MARINA

# DISCOVER THE CRADLE OF DUBAI'S CULTURE

The Creek Marina's elegant oyster design transports you back to the city's rich pearling history.

Experience endless leisure activities - from setting sail at the yacht club to finding inspiration at the open-air art gallery, or simply enjoy an array of exceptional services at the recently opened Vida Hotel.

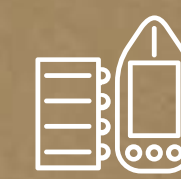
Now welcoming visitors.



Food Trucks



Yacht Club



Marina with 81 Berths



Art  
Installations



Sculptural  
Viewing Deck

VIDA

Licensed Vida Creek  
Harbour Hotel



# RELAX IN NATURE'S LAP

The lush and serene Island Park — the size of six football pitches — will be bustling with fun adventures and attractions for the whole family.

Welcoming visitors in August 2020



Dog Park



Skating Areas



Lawn Amphitheatre



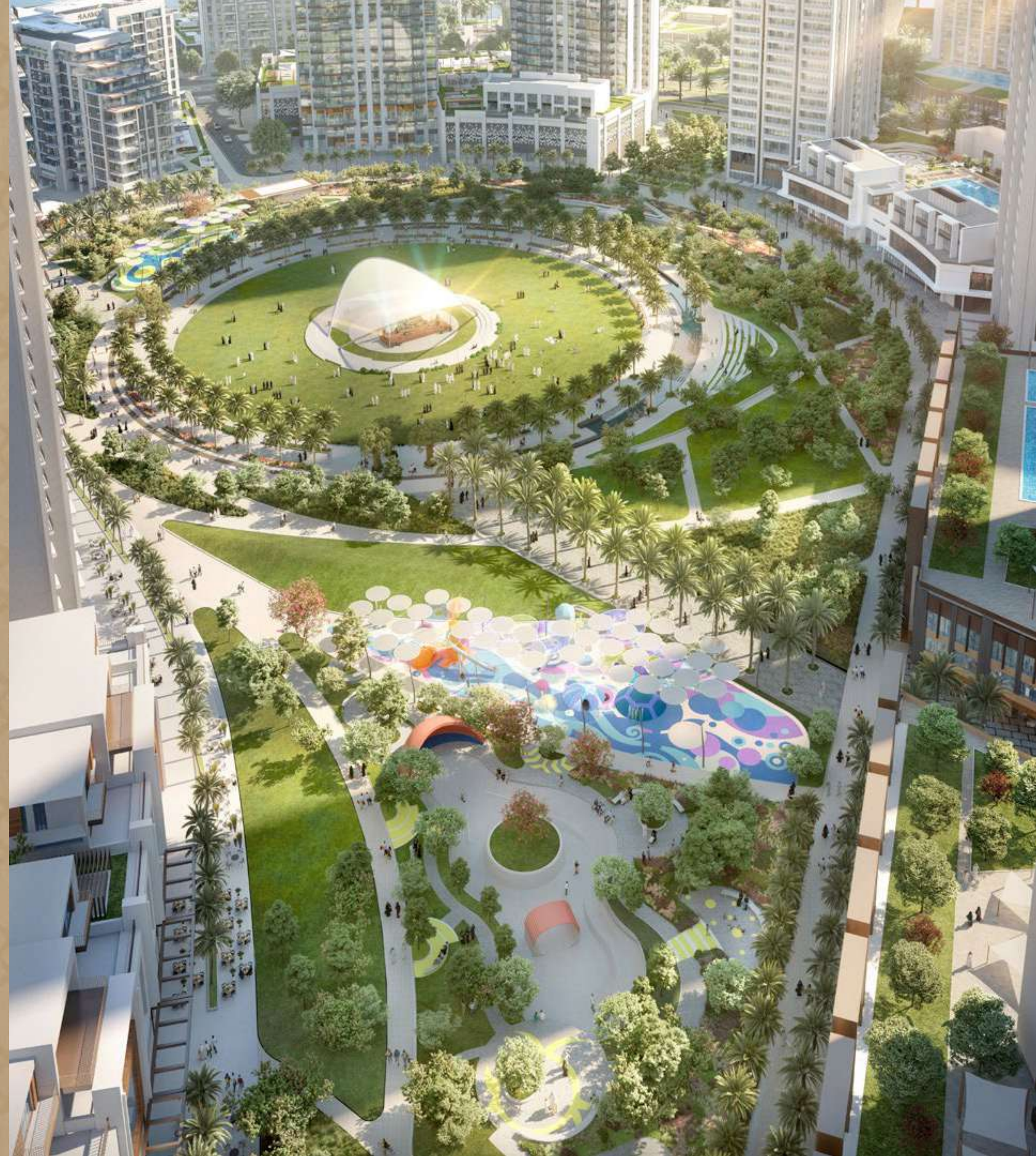
Kids' Play Area



Splash Pad



Fitness Plaza





# WHERE THE CITY MEETS THE BEACH

Creek Beach is bound to deliver excellent financial returns for our investors. Its key attraction is a fresh wave of beach activities, gourmet restaurants and world-class entertainment venues.

Welcoming visitors in December 2022



300-metre Beach



Restaurants by the Water

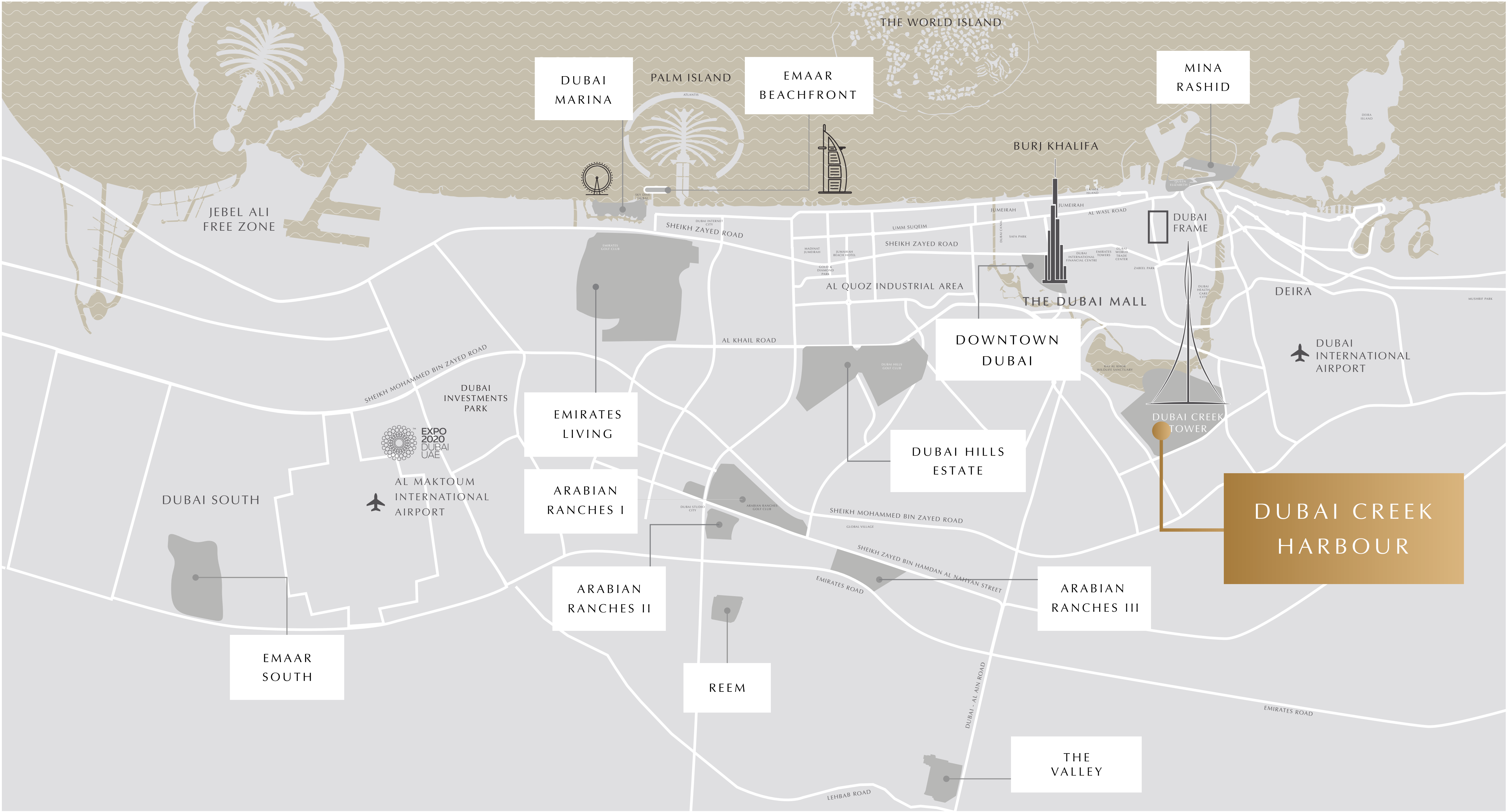


Breathtaking Sunset Views



Licensed Bars & Restaurants





DUBAI MARINA

EMAAR BEACHFRONT

MINA RASHID

JEBEL ALI FREE ZONE

BURJ KHALIFA

DUBAI FRAME

THE DUBAI MALL

DEIRA

DUBAI INTERNATIONAL AIRPORT

DOWNTOWN DUBAI

DUBAI CREEK TOWER

EMIRATES LIVING

DUBAI HILLS ESTATE

DUBAI CREEK HARBOUR

DUBAI SOUTH

EXPO 2020 DUBAI UAE

AL MAKTOUM INTERNATIONAL AIRPORT

ARABIAN RANCHES I

ARABIAN RANCHES II

ARABIAN RANCHES III

EMAAR SOUTH

REEM

THE VALLEY

PALM ISLAND

THE WORLD ISLAND

SHEIKH ZAYED ROAD

UMM SUQEIM

SHEIKH ZAYED ROAD

AL QUOZ INDUSTRIAL AREA

AL KHALIL ROAD

SHEIKH MOHAMMED BIN ZAYED ROAD

DUBAI INVESTMENTS PARK

SHEIKH MOHAMMED BIN ZAYED ROAD

SHEIKH ZAYED BIN HAMDAN AL NAHYAN STREET

EMIRATES ROAD

DUBAI - AL AIN ROAD

EMIRATES ROAD

LEHBAB ROAD

# PERFECTLY CONNECTED

Dubai Creek Harbour features a fully-integrated transport system so you can get around Dubai with ease.

Residents and visitors will enjoy:



An Efficient Road & Bus Network



4 Metro Stations



A Convenient Interchange



3 Bridges Connecting to Creek Island



Water Taxis to Downtown Dubai

- A Connectivity to DXB Airport, Dubai Festival City)
- B Nearest Metro Station
- C Bridge
- D Pedestrian Bridge
- E Access from Ras Al Khor Rd (Now open)



# WELCOMED OUR FIRST RESIDENTS IN 2019

The first residents of Dubai Creek Harbour have all moved into their new homes at the 6-tower Dubai Creek Residences last year.

They were welcomed by a range of art installations adorning the boardwalks of Creek Marina, including a sculpture by the renowned South Korean artist Choi Jeong Hwa.

From art installations to live entertainment, there's something for everyone.

2020  
**8,112**  
Capacity of Residents Occupancy

2021  
**13,590**  
Capacity of Residents Occupancy





# SETTING THE BENCHMARK IN HOSPITALITY SINCE 2007

---

We own and manage a portfolio of hospitality assets and brands including Address Hotels + Resorts, Vida Hotels & Resorts, as well as a comprehensive collection of serviced residences, leisure clubs, spas and restaurants.



Hotels Across  
All Star Segments



Official Hospitality  
Partner of Expo  
2020 Dubai



Expanding  
Globally

# THE STRENGTH OF EMAAR

An undisputed leader in the local real estate market, Emaar has grown over the years to become the largest global developer outside of mainland China. You will be investing with one of the most prestigious brands in the world.\*

REVENUE  
AED  
11.6BN  
H1 2019

NET PROFIT  
AED  
3.1BN  
H1 2019

MARKET CAP  
AED  
32BN  
30 JUNE 2019

PROPERTY  
SALES IN UAE  
↑ 52%  
H1 2019

NET PROFIT  
MARGIN  
↑ 27%  
H1 2019

YOY BRAND  
VALUE  
↑ 39%

\*Source: The World's Best Regarded Companies 2019 list by Forbes



**BOOK YOUR INTEREST**

**+971 55 837 7712**

**sales@drehomes.ae**

**Visit Us For More Info:-**

**<https://creek-palace.drehomes.ae/>**