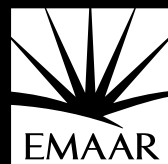


ACT ONE | ACT TWO





03

ABOUT EMAAR

04

DESTINATION

08

PROJECT OVERVIEW

09

LOCATION

13

INTERIOR DESIGN

15

AMENITIES

18

FLOOR PLANS

54

CONTACT US





## PRESENTED BY EMAAR

Ever since its establishment in 1997, Emaar has been a privileged artist, crafting a Dubai few could have imagined. With thoughtful planning and decisive action, it has acted out its desires and in the process redefined the concept of comfortable and luxurious living.





## SET IN DOWNTOWN DUBAI

At the centre of Emaar's achievements stands a towering example of architectural vision and engineering excellence - Burj Khalifa, the world's tallest skyscraper. The building stunned the world and thrust Dubai into the centre of the world stage. All around this magnificent centrepiece, Emaar' has continued to add flourishes that take in the world's largest performing fountain and the world's largest retail and entertainment destination.

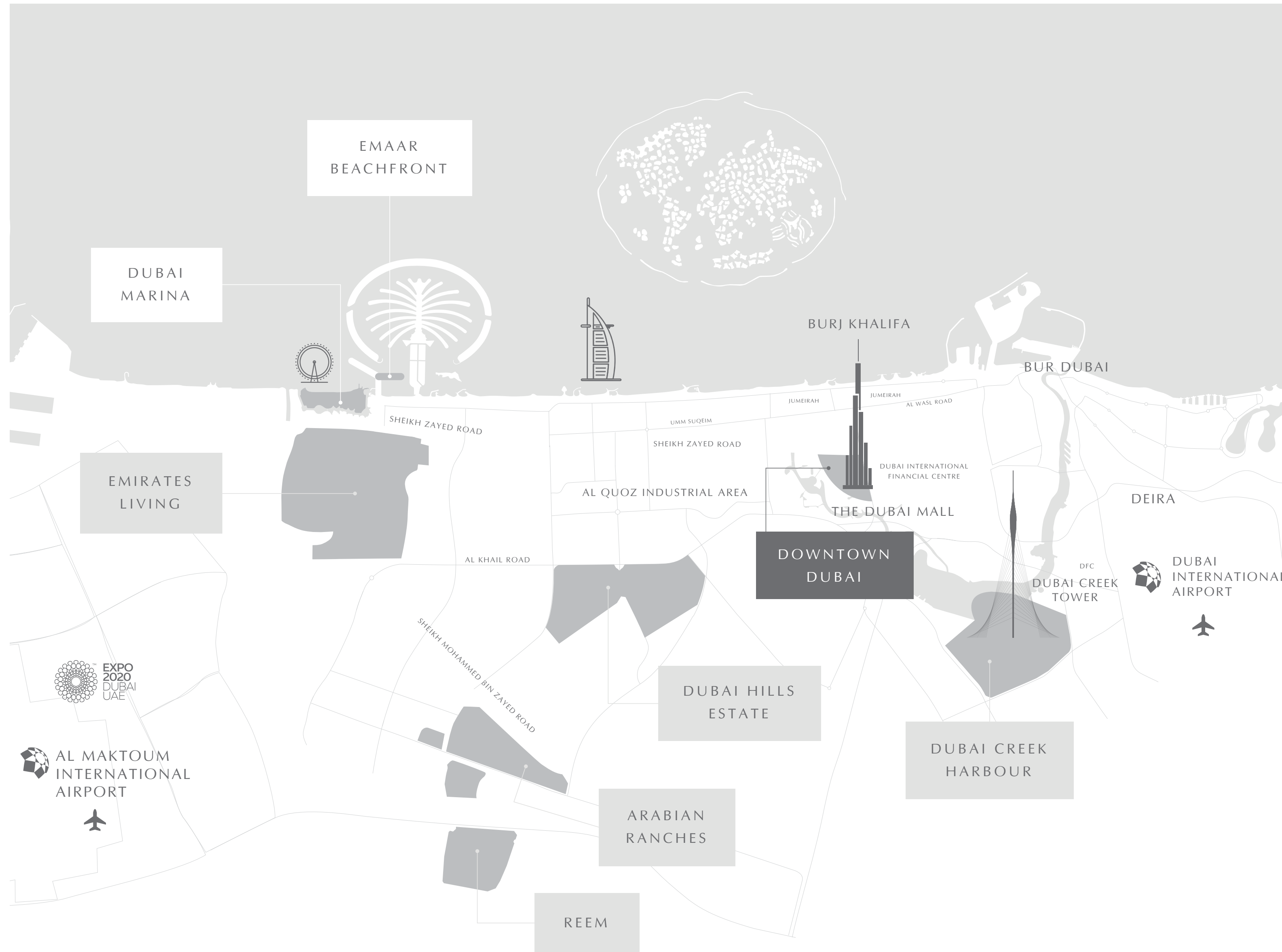




## WITH THE BACKDROP OF THE FLOURISHING OPERA DISTRICT

Located in the middle of Downtown Dubai is the Opera District, the flourishing cultural soul of the city with the Dubai Opera at its heart. The 2000-seat performance arts centre, styled on the classic wooden dhows, showcases electrifying performances from around the world, including musicals, concerts, opera, ballet and much more.





EMAAR  
BEACHFRONT

DUBAI  
MARINA

EMIRATES  
LIVING



BURJ KHALIFA

BUR DUBAI

THE DUBAI  
MALL

DOWNTOWN  
DUBAI

DUBAI HILLS  
ESTATE

ARABIAN  
RANCHES

REEM

**BURJ  
KHALIFA**  
The world's  
tallest building

**THE  
DUBAI MALL**  
The world's largest  
& entertainment destination

**THE DUBAI  
FOUNTAIN**  
The world's largest  
choreographed fountain system

**BURJ KHALIFA  
LAKE**  
30-acre man-made lake

**THE DUBAI  
OPERA**  
2000 seat multi-format venue

**SOUK  
AL BAHAR**  
Luxury Arabian market

**10  
MINUTES**  
to Dubai Int'l Airport

**5 MINUTES**  
to Dubai International  
Financial Centre (DIFC)





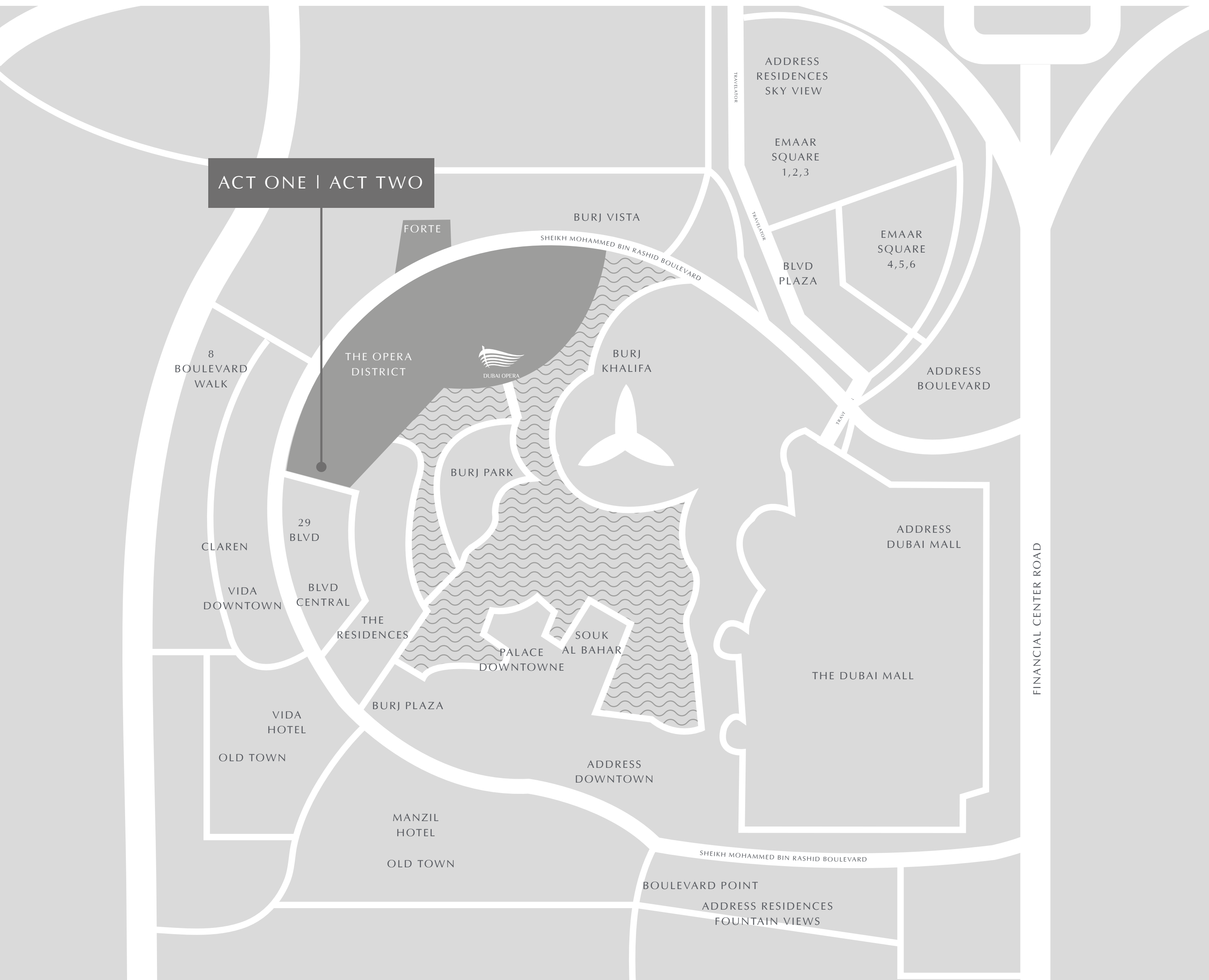




## THE STORY OF ACT ONE | ACT TWO UNFOLDS

The exceptional residential towers, rising majestically in The Opera District and within walking distance from the Dubai Opera, host a range of 1, 2 and 3 bedroom premium apartments. Their design was inspired by the iconic Dubai Fountain and, apart from providing a dynamic facade, stand at the gateway to the world's most notable project, Burj Khalifa.





# AN EPIC LIFE'S JOURNEY

Act One | Act Two offers unreal views of The Dubai Fountain and Burj Khalifa. With their prime location in Downtown Dubai, residents of the towers can expect to be part of grand celebrations and entertainment events throughout the year, not to mention their ideal location in the only cultural and entertainment hub in the GCC.





## PERFORMANCE CAPTURED IN ARCHITECTURE

Act One | Act Two embody the dynamic features of the dancing Dubai Fountain. The stepping massing creates a unique exterior facade while maintaining a practical purpose. The horizontal stepping create wider views of Burj Khalifa while the vertical stepping reflect the dancing fountain's vertical motion and provide a variable range of roof terraces and balconies, each offering a unique view.









HAVE YOUR PLACE ON  
THE WORLD STAGE





## A SYMPHONY OF INTERIOR DESIGN

The interiors of Act One | Act Two are tastefully designed and crafted to embody both timeless style and contemporary class. Each residence has a theatrical quality. From superb craftsmanship to bespoke details and vertiginous views, the apartments at Act One | Act Two are designed for those who have a flair for the dramatic.





## A SOOTHING INTERMISSION

Let your beautifully conceived master bedroom provide a soothing intermezzo to your everyday life. A soft and dreamy interior palette creates a restful backdrop; the design equivalent of a Johann Sebastian Bach suite.





## ALWAYS INSPIRED, ALWAYS PERFORMING

The towers grant residents ready access to a gym, a health club and luxurious restaurants and cafes that cater to a wide range of tastes. This prime residential address is a walk away from major attractions like The Dubai Mall, The Dubai Fountain and Souk al Bahar, among others. With their proximity to the Dubai Metro, the whole city is within reach. Residents of Act One | Act Two enjoy views of Burj Khalifa and Sheikh Mohammed Bin Rashid Boulevard, guaranteeing memorable experiences.



YOUR FRONT ROW SEAT TO  
DOWNTOWN DUBAI







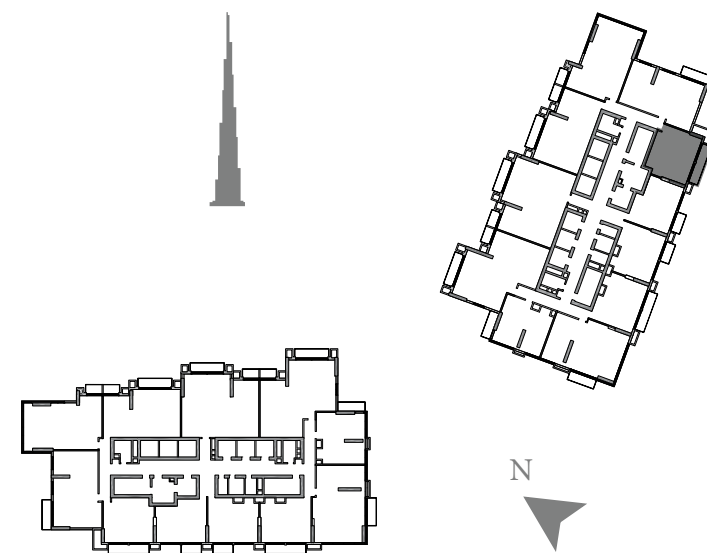
# FLOOR PLANS



ACT ONE | ACT TWO



1 BEDROOM - 01      UNIT 07      TOWER 2 - ZONE 1      LEVELS: L06-L13



SELLABLE AREA		
	sq.m	sq.ft
Suite Area	57.35	617
Balcony Area	10.81	116
<b>Total Area</b>	<b>68.16</b>	<b>733</b>

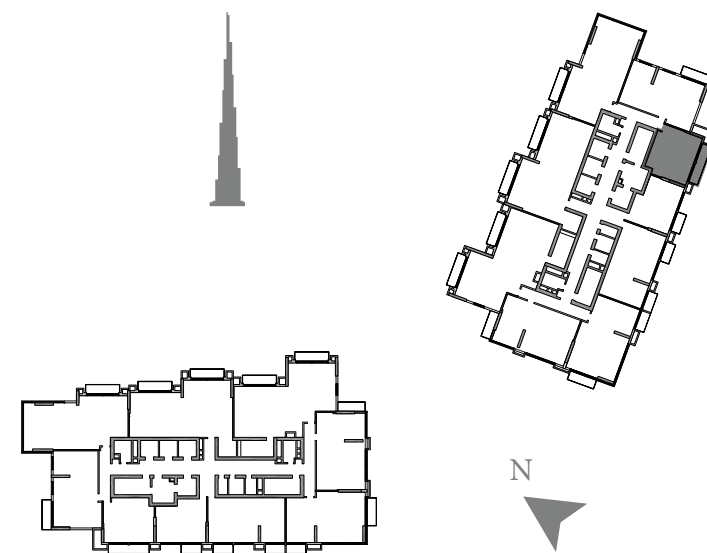
1. All dimensions are in imperial and metric, and measured to structural elements and exclude wall finishes and construction tolerances. 2. All materials, dimensions, and drawings are approximate only. 3. Information is subject to change without notice, at developer's absolute discretion. 4. Actual area may vary from the stated area. 5. Drawings not to scale. 6. All images used are for illustrative purposes only and do not represent the actual size, features, specifications, fittings, and furnishings. 7. The developer reserves the right to make revisions/alterations, at its absolute discretion, without any liability whatsoever.



ACT ONE | ACT TWO



1 BEDROOM - 01      UNIT 06      TOWER 2 - ZONE 2      LEVELS: L16-L27



SELLABLE AREA		
	sq.m	sq.ft
Suite Area	57.47	619
Balcony Area	10.81	116
<b>Total Area</b>	<b>68.28</b>	<b>735</b>

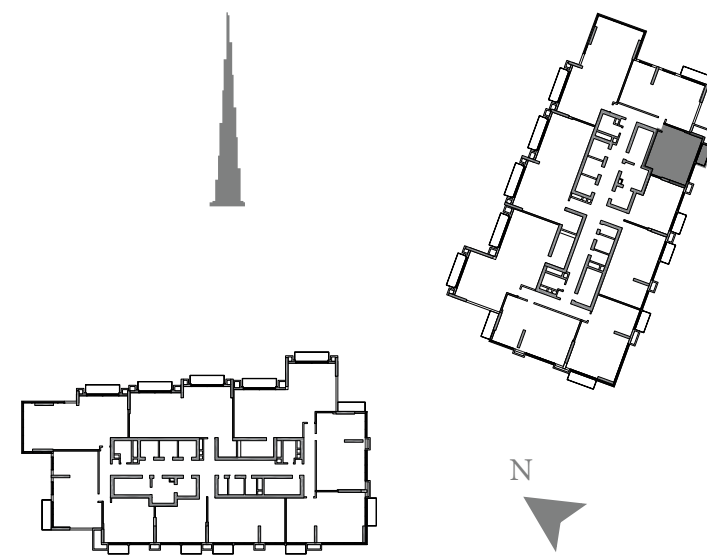
1. All dimensions are in imperial and metric, and measured to structural elements and exclude wall finishes and construction tolerances. 2. All materials, dimensions, and drawings are approximate only. 3. Information is subject to change without notice, at developer's absolute discretion. 4. Actual area may vary from the stated area. 5. Drawings not to scale. 6. All images used are for illustrative purposes only and do not represent the actual size, features, specifications, fittings, and furnishings. 7. The developer reserves the right to make revisions/alterations, at its absolute discretion, without any liability whatsoever.



ACT ONE | ACT TWO



1 BEDROOM - 01A      UNIT 06      TOWER 2 - ZONE 2      LEVELS: L29-L38



SELLABLE AREA		
	sq.m	sq.ft
Suite Area	57.47	619
Balcony Area	5.36	58
Total Area	62.83	677

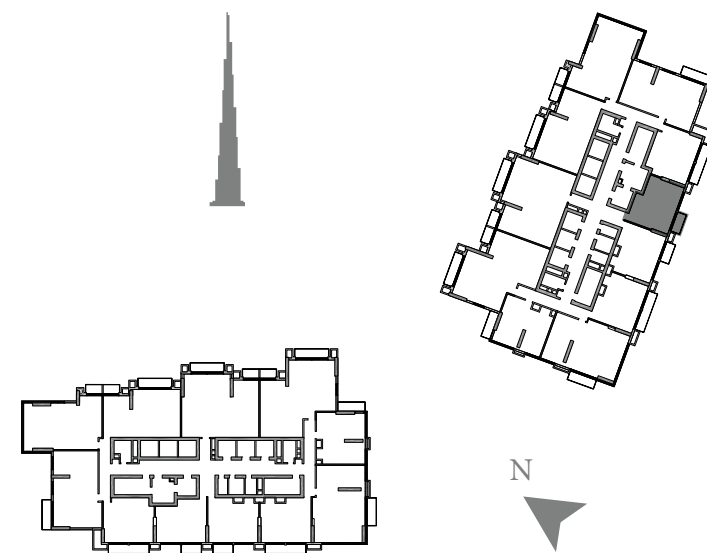
1. All dimensions are in imperial and metric, and measured to structural elements and exclude wall finishes and construction tolerances. 2. All materials, dimensions, and drawings are approximate only. 3. Information is subject to change without notice, at developer's absolute discretion. 4. Actual area may vary from the stated area. 5. Drawings not to scale. 6. All images used are for illustrative purposes only and do not represent the actual size, features, specifications, fittings, and furnishings. 7. The developer reserves the right to make revisions/alterations, at its absolute discretion, without any liability whatsoever.



ACT ONE | ACT TWO



1 BEDROOM - 02      UNIT 06      TOWER 2 - ZONE 1      LEVELS: L06-L13



SELLABLE AREA		
	sq.m	sq.ft
Suite Area	56.47	608
Balcony Area	5.36	58
Total Area	61.83	666

1. All dimensions are in imperial and metric, and measured to structural elements and exclude wall finishes and construction tolerances. 2. All materials, dimensions, and drawings are approximate only. 3. Information is subject to change without notice, at developer's absolute discretion. 4. Actual area may vary from the stated area. 5. Drawings not to scale. 6. All images used are for illustrative purposes only and do not represent the actual size, features, specifications, fittings, and furnishings. 7. The developer reserves the right to make revisions/alterations, at its absolute discretion, without any liability whatsoever.



ACT ONE | ACT TWO

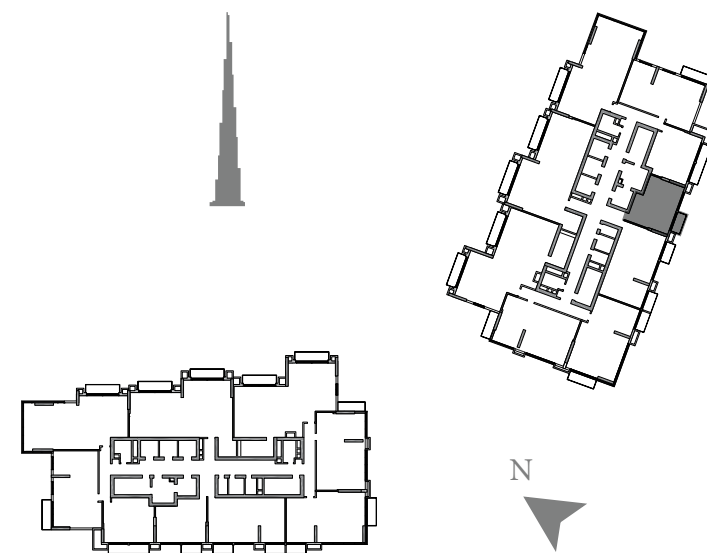


1 BEDROOM - 02

UNIT 05

TOWER 2 - ZONE 2

LEVELS: L16-L27,L29-L30



SELLABLE AREA	sq.m	sq.ft
	Suite Area	56.47
Balcony Area	5.36	58
Total Area	61.83	666

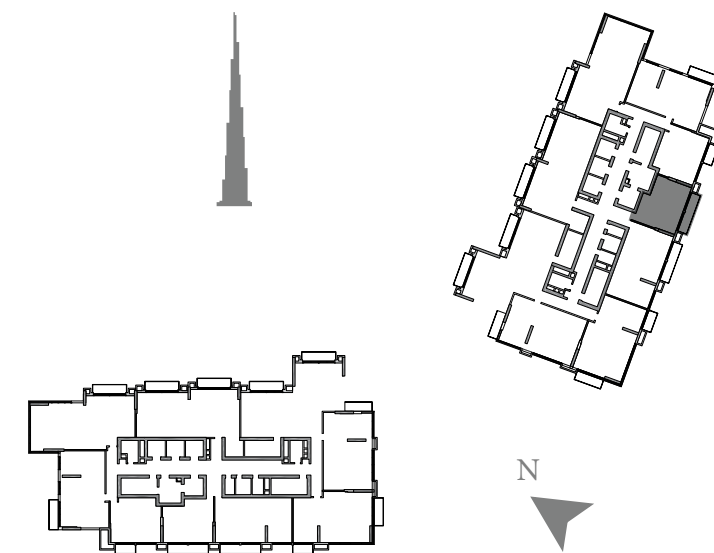
1. All dimensions are in imperial and metric, and measured to structural elements and exclude wall finishes and construction tolerances. 2. All materials, dimensions, and drawings are approximate only. 3. Information is subject to change without notice, at developer's absolute discretion. 4. Actual area may vary from the stated area. 5. Drawings not to scale. 6. All images used are for illustrative purposes only and do not represent the actual size, features, specifications, fittings, and furnishings. 7. The developer reserves the right to make revisions/alterations, at its absolute discretion, without any liability whatsoever.



ACT ONE | ACT TWO



1 BEDROOM - 02A      UNIT 05      TOWER 2 - ZONE 2      LEVELS: L31-L32,L33-L38



SELLABLE AREA	sq.m	sq.ft
	Suite Area	56.47
Balcony Area	10.81	116
Total Area	67.28	724

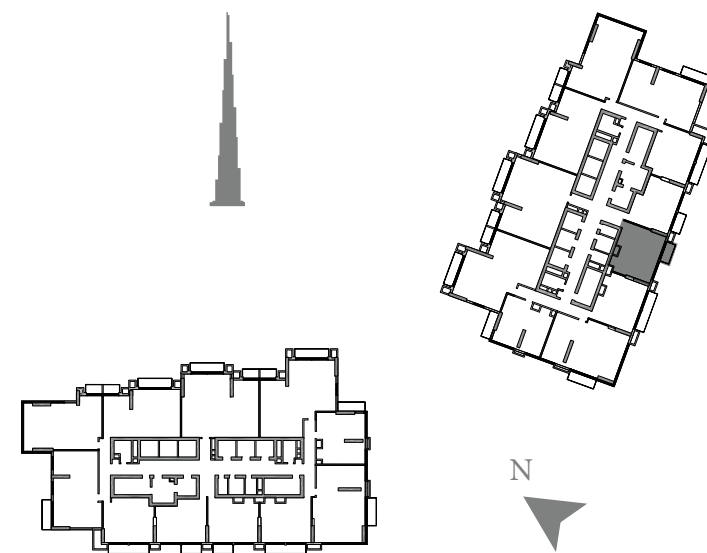
1. All dimensions are in imperial and metric, and measured to structural elements and exclude wall finishes and construction tolerances. 2. All materials, dimensions, and drawings are approximate only. 3. Information is subject to change without notice, at developer's absolute discretion. 4. Actual area may vary from the stated area. 5. Drawings not to scale. 6. All images used are for illustrative purposes only and do not represent the actual size, features, specifications, fittings, and furnishings. 7. The developer reserves the right to make revisions/alterations, at its absolute discretion, without any liability whatsoever.



ACT ONE | ACT TWO



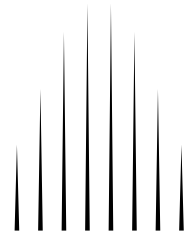
1 BEDROOM - 03      UNIT 05      TOWER 2 - ZONE 1      LEVELS: L06-L13



SELLABLE AREA		
	sq.m	sq.ft
Suite Area	60.64	653
Balcony Area	5.36	58
Total Area	66.00	711

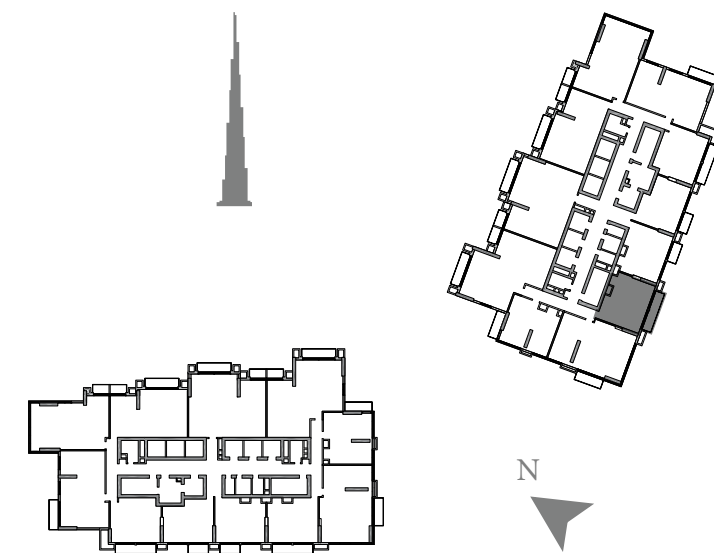
1. All dimensions are in imperial and metric, and measured to structural elements and exclude wall finishes and construction tolerances. 2. All materials, dimensions, and drawings are approximate only. 3. Information is subject to change without notice, at developer's absolute discretion. 4. Actual area may vary from the stated area. 5. Drawings not to scale. 6. All images used are for illustrative purposes only and do not represent the actual size, features, specifications, fittings, and furnishings. 7. The developer reserves the right to make revisions/alterations, at its absolute discretion, without any liability whatsoever.



  
 ACT ONE | ACT TWO



1 BEDROOM - 04   
 UNIT 04   
 TOWER 2 - ZONE 1   
 LEVELS: L06-L13



SELLABLE AREA		
	sq.m	sq.ft
Suite Area	61.05	657
Balcony Area	10.81	116
<b>Total Area</b>	<b>71.86</b>	<b>773</b>

1. All dimensions are in imperial and metric, and measured to structural elements and exclude wall finishes and construction tolerances. 2. All materials, dimensions, and drawings are approximate only. 3. Information is subject to change without notice, at developer's absolute discretion. 4. Actual area may vary from the stated area. 5. Drawings not to scale. 6. All images used are for illustrative purposes only and do not represent the actual size, features, specifications, fittings, and furnishings. 7. The developer reserves the right to make revisions/alterations, at its absolute discretion, without any liability whatsoever.



ACT ONE | ACT TWO

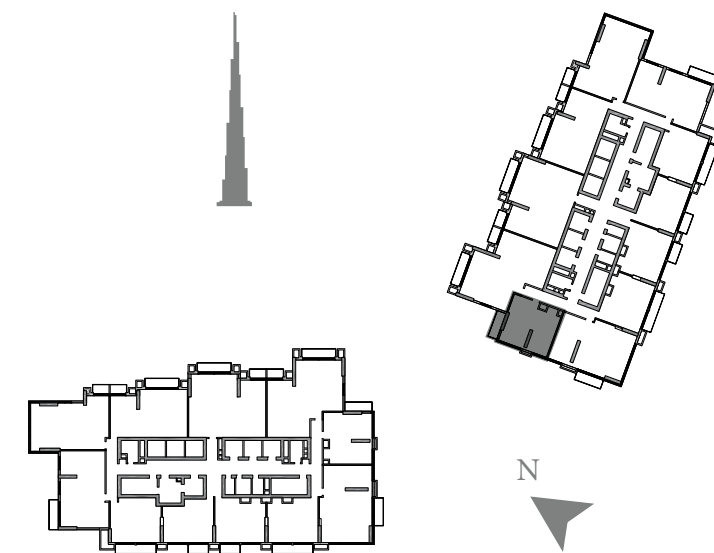


1 BEDROOM - 05

UNIT 02

TOWER 2 - ZONE 1

LEVELS: L06-L13



SELLABLE AREA	sq.m	sq.ft
	Suite Area	64.80
Balcony Area	7.85	84
Total Area	72.65	782

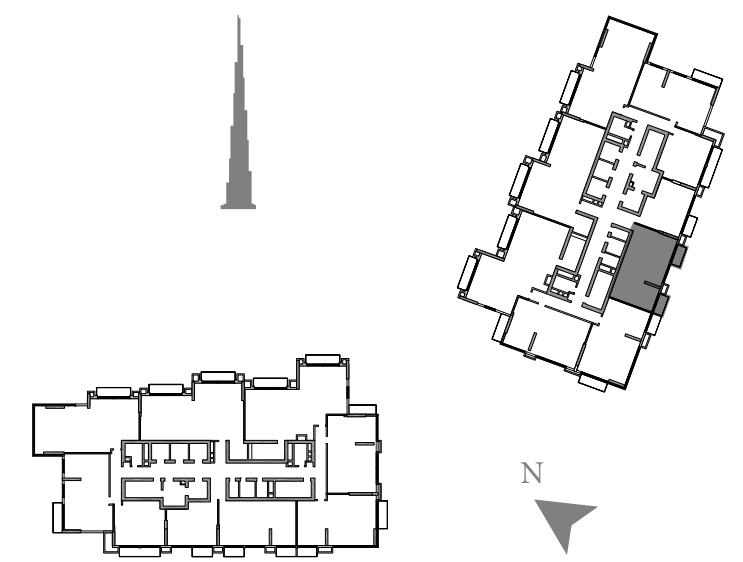
1. All dimensions are in imperial and metric, and measured to structural elements and exclude wall finishes and construction tolerances. 2. All materials, dimensions, and drawings are approximate only. 3. Information is subject to change without notice, at developer's absolute discretion. 4. Actual area may vary from the stated area. 5. Drawings not to scale. 6. All images used are for illustrative purposes only and do not represent the actual size, features, specifications, fittings, and furnishings. 7. The developer reserves the right to make revisions/alterations, at its absolute discretion, without any liability whatsoever.



ACT ONE | ACT TWO



2 BEDROOM - 01      UNIT 04      TOWER 2 - ZONE 2      LEVELS: L16-L27



SELLABLE AREA		
	sq.m	sq.ft
Suite Area	93.20	1003
Balcony Area	10.76	116
<b>Total Area</b>	<b>103.96</b>	<b>1119</b>

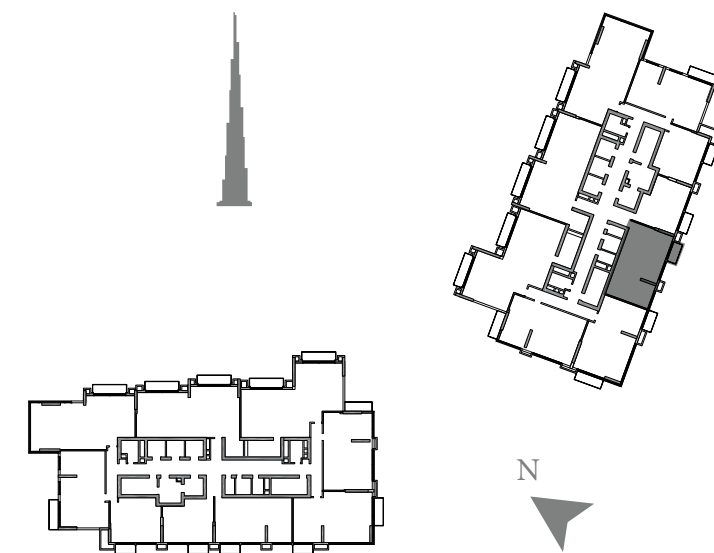
1. All dimensions are in imperial and metric, and measured to structural elements and exclude wall finishes and construction tolerances. 2. All materials, dimensions, and drawings are approximate only. 3. Information is subject to change without notice, at developer's absolute discretion. 4. Actual area may vary from the stated area. 5. Drawings not to scale. 6. All images used are for illustrative purposes only and do not represent the actual size, features, specifications, fittings, and furnishings. 7. The developer reserves the right to make revisions/alterations, at its absolute discretion, without any liability whatsoever.



ACT ONE | ACT TWO



2 BEDROOM - 01A      UNIT 04      TOWER 2 - ZONE 2      LEVELS: L29,L30



SELLABLE AREA		
	sq.m	sq.ft
Suite Area	93.20	1003
Balcony Area	5.36	58
<b>Total Area</b>	<b>98.56</b>	<b>1061</b>

1. All dimensions are in imperial and metric, and measured to structural elements and exclude wall finishes and construction tolerances. 2. All materials, dimensions, and drawings are approximate only. 3. Information is subject to change without notice, at developer's absolute discretion. 4. Actual area may vary from the stated area. 5. Drawings not to scale. 6. All images used are for illustrative purposes only and do not represent the actual size, features, specifications, fittings, and furnishings. 7. The developer reserves the right to make revisions/alterations, at its absolute discretion, without any liability whatsoever.



ACT ONE | ACT TWO

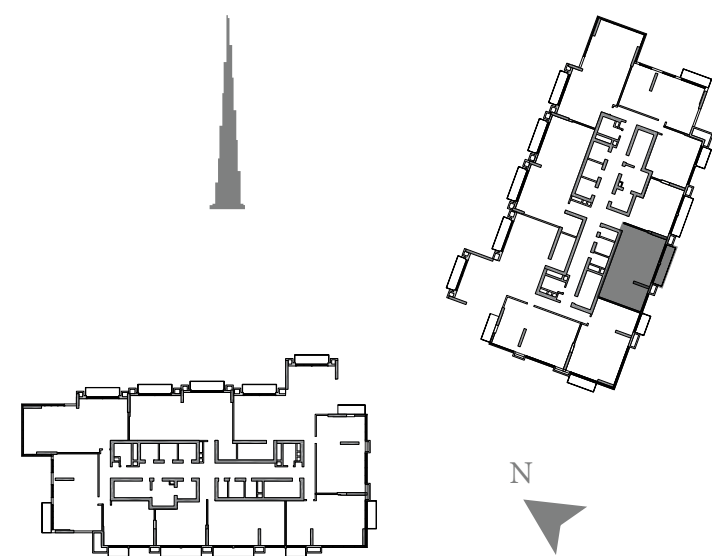


2 BEDROOM - 01B

UNIT 04

TOWER 2 - ZONE 2

LEVELS: L31-L32,L33-L38



SELLABLE AREA		
	sq.m	sq.ft
Suite Area	93.20	1003
Balcony Area	10.81	116
<b>Total Area</b>	<b>104.01</b>	<b>1119</b>

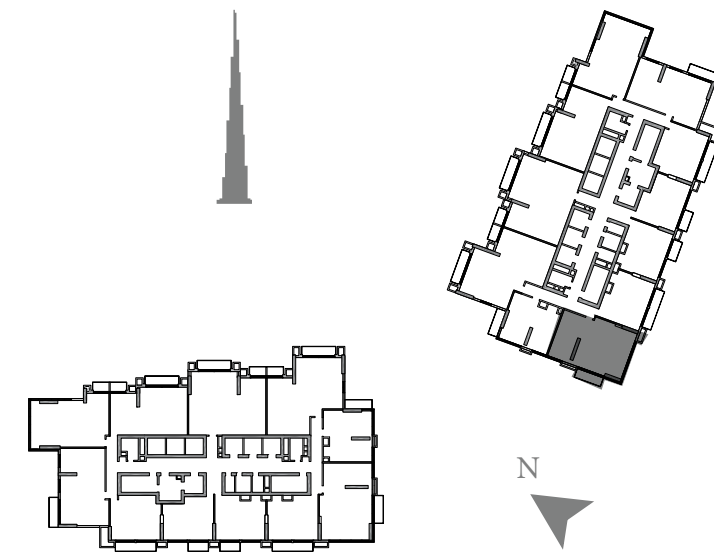
1. All dimensions are in imperial and metric, and measured to structural elements and exclude wall finishes and construction tolerances. 2. All materials, dimensions, and drawings are approximate only. 3. Information is subject to change without notice, at developer's absolute discretion. 4. Actual area may vary from the stated area. 5. Drawings not to scale. 6. All images used are for illustrative purposes only and do not represent the actual size, features, specifications, fittings, and furnishings. 7. The developer reserves the right to make revisions/alterations, at its absolute discretion, without any liability whatsoever.



ACT ONE | ACT TWO



2 BEDROOM - 02      UNIT 03      TOWER 2 - ZONE 1      LEVELS: L06-L13



SELLABLE AREA	sq.m	sq.ft
	Suite Area	99.83
Balcony Area	7.79	84
Total Area	107.62	1159

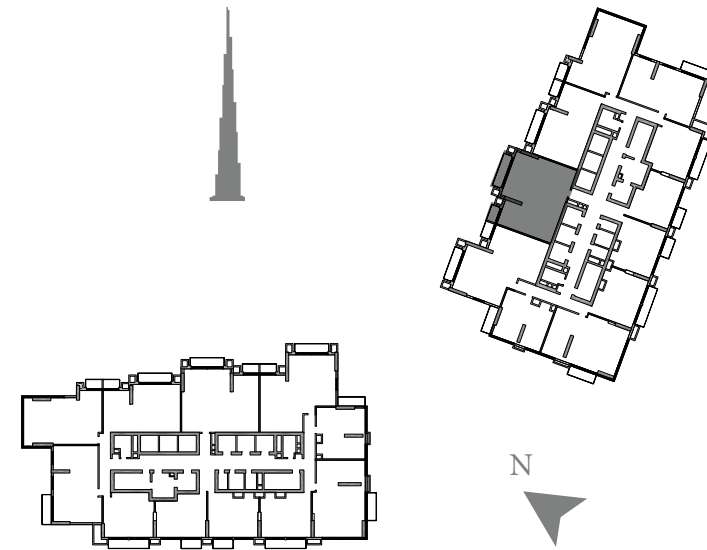
1. All dimensions are in imperial and metric, and measured to structural elements and exclude wall finishes and construction tolerances. 2. All materials, dimensions, and drawings are approximate only. 3. Information is subject to change without notice, at developer's absolute discretion. 4. Actual area may vary from the stated area. 5. Drawings not to scale. 6. All images used are for illustrative purposes only and do not represent the actual size, features, specifications, fittings, and furnishings. 7. The developer reserves the right to make revisions/alterations, at its absolute discretion, without any liability whatsoever.



ACT ONE | ACT TWO



2 BEDROOM - 03      UNIT 11      TOWER 2 - ZONE 1      LEVELS: L06-L13



SELLABLE AREA		
	sq.m	sq.ft
Suite Area	120.81	1300
Balcony Area	13.48	145
Total Area	134.29	1445

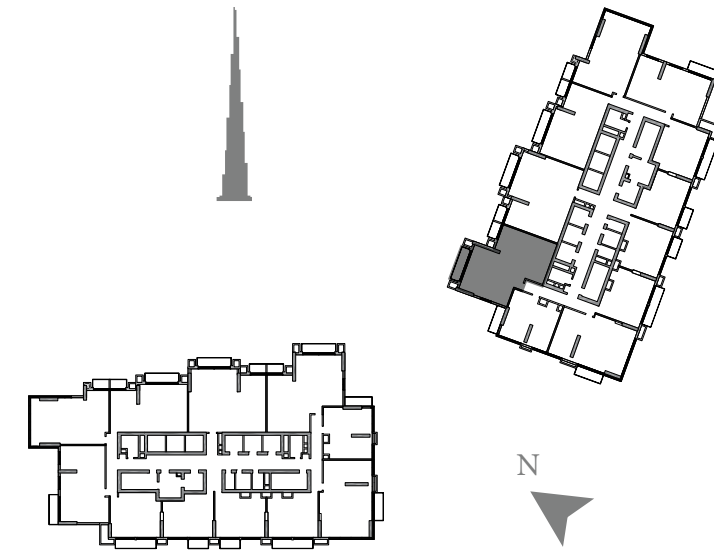
1. All dimensions are in imperial and metric, and measured to structural elements and exclude wall finishes and construction tolerances. 2. All materials, dimensions, and drawings are approximate only. 3. Information is subject to change without notice, at developer's absolute discretion. 4. Actual area may vary from the stated area. 5. Drawings not to scale. 6. All images used are for illustrative purposes only and do not represent the actual size, features, specifications, fittings, and furnishings. 7. The developer reserves the right to make revisions/alterations, at its absolute discretion, without any liability whatsoever.



ACT ONE | ACT TWO



2 BEDROOM - 04      UNIT 01      TOWER 2 - ZONE 1      LEVELS: L06-L13



SELLABLE AREA		
	sq.m	sq.ft
Suite Area	111.28	1198
Balcony Area	13.48	145
Total Area	124.76	1343

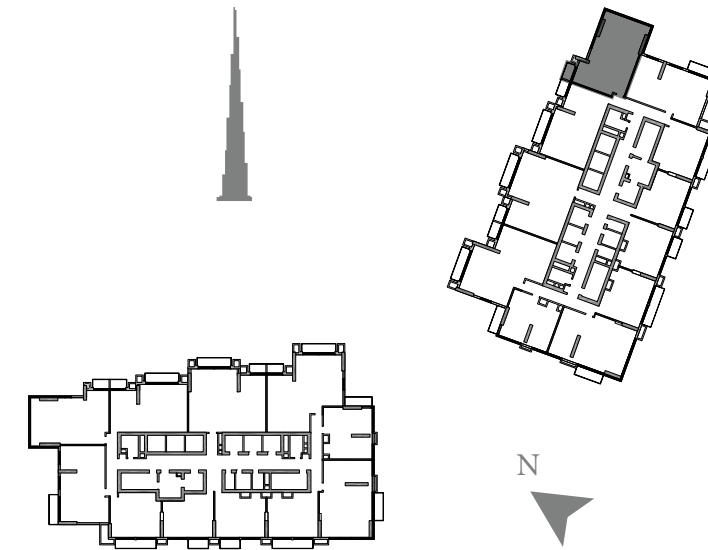
1. All dimensions are in imperial and metric, and measured to structural elements and exclude wall finishes and construction tolerances. 2. All materials, dimensions, and drawings are approximate only. 3. Information is subject to change without notice, at developer's absolute discretion. 4. Actual area may vary from the stated area. 5. Drawings not to scale. 6. All images used are for illustrative purposes only and do not represent the actual size, features, specifications, fittings, and furnishings. 7. The developer reserves the right to make revisions/alterations, at its absolute discretion, without any liability whatsoever.



ACT ONE | ACT TWO



2 BEDROOM - 05      UNIT 09      TOWER 2 - ZONE 1      LEVELS: L06-L13



SELLABLE AREA	sq.m	sq.ft
	Suite Area	98.27
Balcony Area	4.49	48
Total Area	102.76	1106

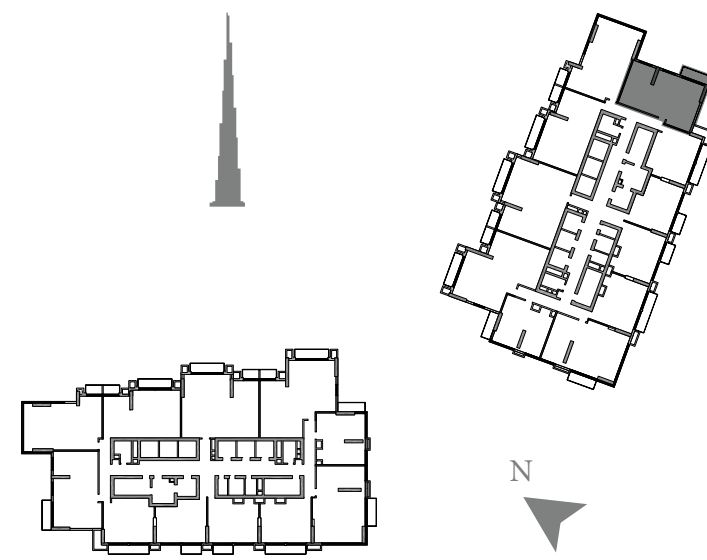
1. All dimensions are in imperial and metric, and measured to structural elements and exclude wall finishes and construction tolerances. 2. All materials, dimensions, and drawings are approximate only. 3. Information is subject to change without notice, at developer's absolute discretion. 4. Actual area may vary from the stated area. 5. Drawings not to scale. 6. All images used are for illustrative purposes only and do not represent the actual size, features, specifications, fittings, and furnishings. 7. The developer reserves the right to make revisions/alterations, at its absolute discretion, without any liability whatsoever.



ACT ONE | ACT TWO



2 BEDROOM - 06      UNIT 08      TOWER 2 - ZONE 1      LEVELS: L06-L13



SELLABLE AREA		
	sq.m	sq.ft
Suite Area	93.86	1010
Balcony Area	8.36	90
<b>Total Area</b>	<b>102.22</b>	<b>1100</b>

1. All dimensions are in imperial and metric, and measured to structural elements and exclude wall finishes and construction tolerances. 2. All materials, dimensions, and drawings are approximate only. 3. Information is subject to change without notice, at developer's absolute discretion. 4. Actual area may vary from the stated area. 5. Drawings not to scale. 6. All images used are for illustrative purposes only and do not represent the actual size, features, specifications, fittings, and furnishings. 7. The developer reserves the right to make revisions/alterations, at its absolute discretion, without any liability whatsoever.



ACT ONE | ACT TWO

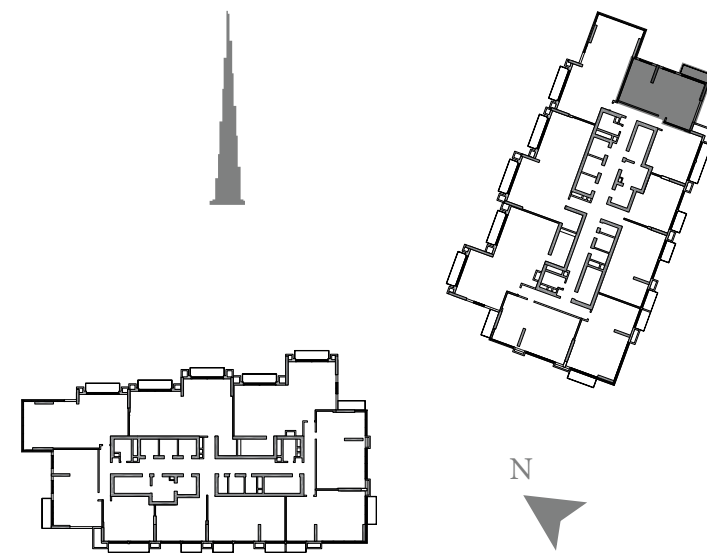


2 BEDROOM - 06

UNIT 07

TOWER 2 - ZONE 2

LEVELS: L16-L27,L29-L32



SELLABLE AREA		
	sq.m	sq.ft
Suite Area	94.00	1012
Balcony Area	8.36	90
Total Area	102.36	1102

1. All dimensions are in imperial and metric, and measured to structural elements and exclude wall finishes and construction tolerances. 2. All materials, dimensions, and drawings are approximate only. 3. Information is subject to change without notice, at developer's absolute discretion. 4. Actual area may vary from the stated area. 5. Drawings not to scale. 6. All images used are for illustrative purposes only and do not represent the actual size, features, specifications, fittings, and furnishings. 7. The developer reserves the right to make revisions/alterations, at its absolute discretion, without any liability whatsoever.



ACT ONE | ACT TWO

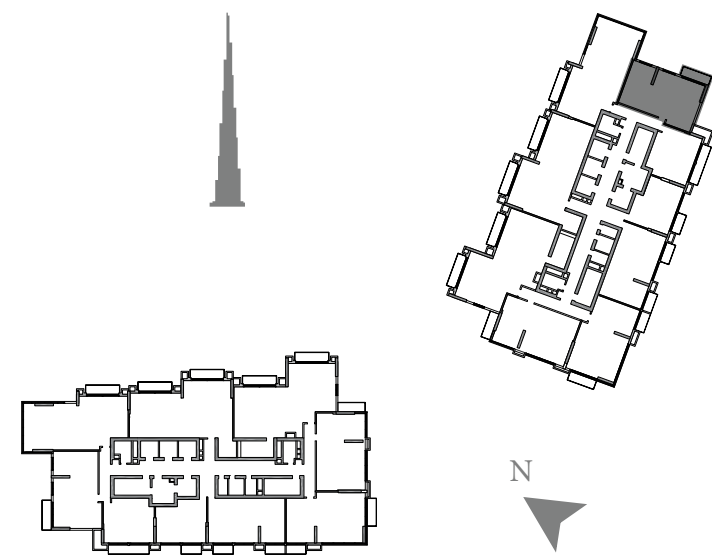


2 BEDROOM - 06

UNIT 07

TOWER 2 - ZONE 2

LEVELS: L33-L38



SELLABLE AREA		
	sq.m	sq.ft
Suite Area	93.96	1011
Balcony Area	8.36	90
<b>Total Area</b>	<b>102.32</b>	<b>1101</b>

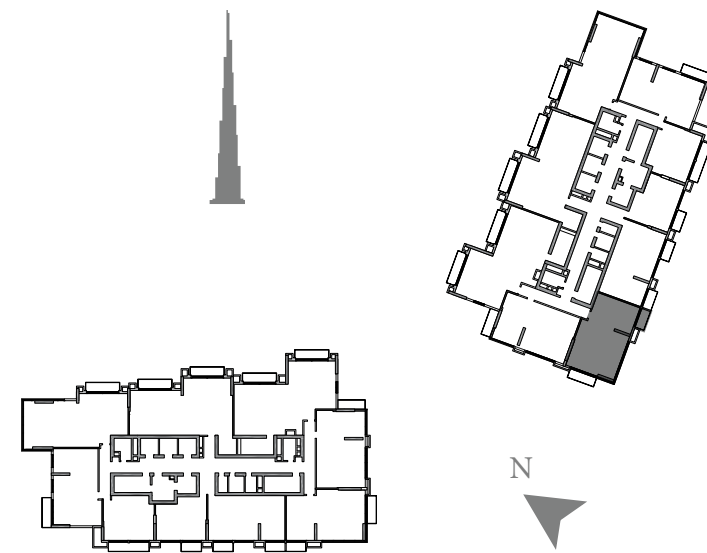
1. All dimensions are in imperial and metric, and measured to structural elements and exclude wall finishes and construction tolerances. 2. All materials, dimensions, and drawings are approximate only. 3. Information is subject to change without notice, at developer's absolute discretion. 4. Actual area may vary from the stated area. 5. Drawings not to scale. 6. All images used are for illustrative purposes only and do not represent the actual size, features, specifications, fittings, and furnishings. 7. The developer reserves the right to make revisions/alterations, at its absolute discretion, without any liability whatsoever.



ACT ONE | ACT TWO



2 BEDROOM - 07      UNIT 03      TOWER 2 - ZONE 2      LEVELS: L16-L27,L29-L38

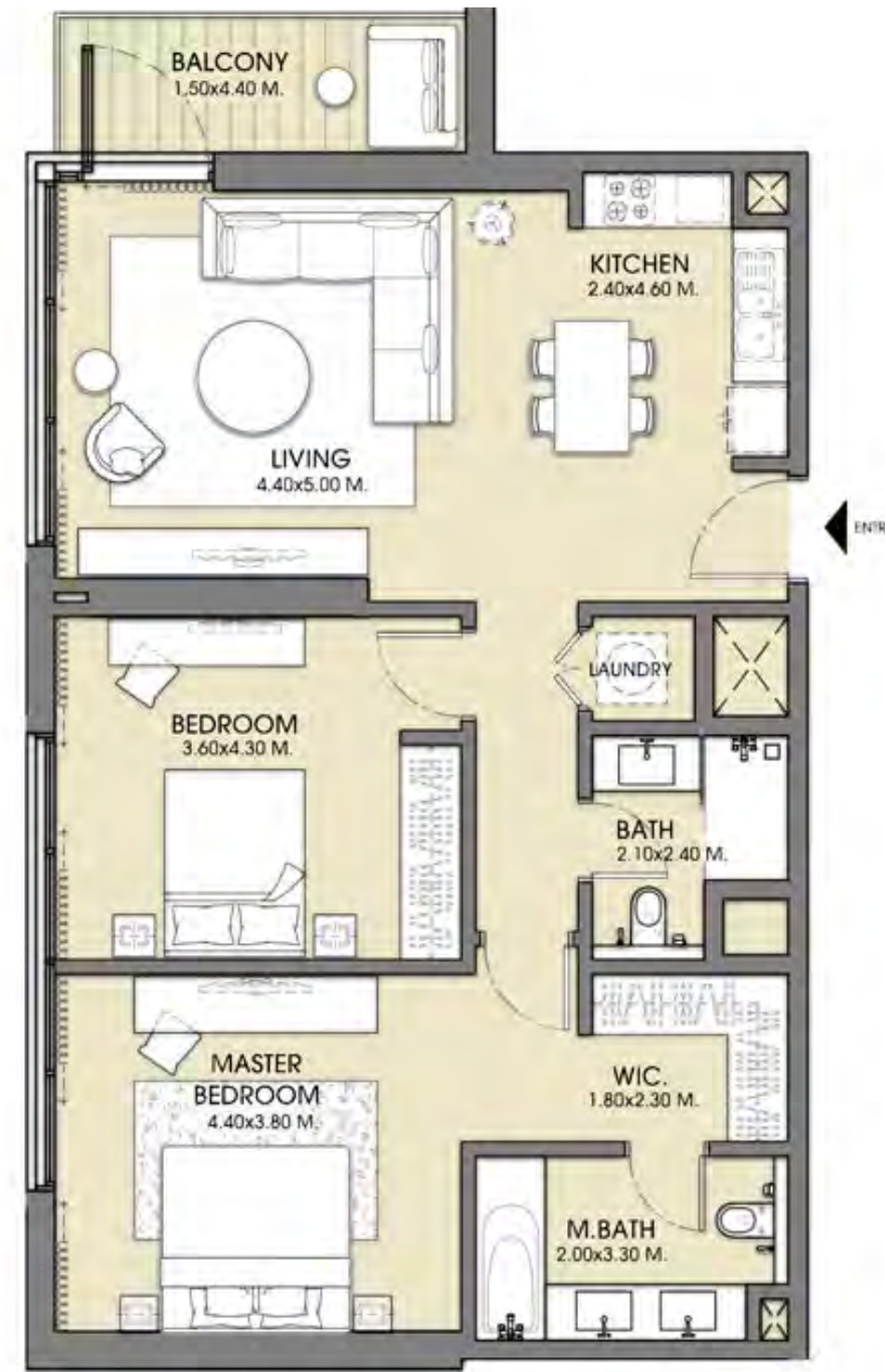


SELLABLE AREA		
	sq.m	sq.ft
Suite Area	99.10	1067
Balcony Area	13.19	142
Total Area	112.29	1209

1. All dimensions are in imperial and metric, and measured to structural elements and exclude wall finishes and construction tolerances. 2. All materials, dimensions, and drawings are approximate only. 3. Information is subject to change without notice, at developer's absolute discretion. 4. Actual area may vary from the stated area. 5. Drawings not to scale. 6. All images used are for illustrative purposes only and do not represent the actual size, features, specifications, fittings, and furnishings. 7. The developer reserves the right to make revisions/alterations, at its absolute discretion, without any liability whatsoever.



ACT ONE | ACT TWO

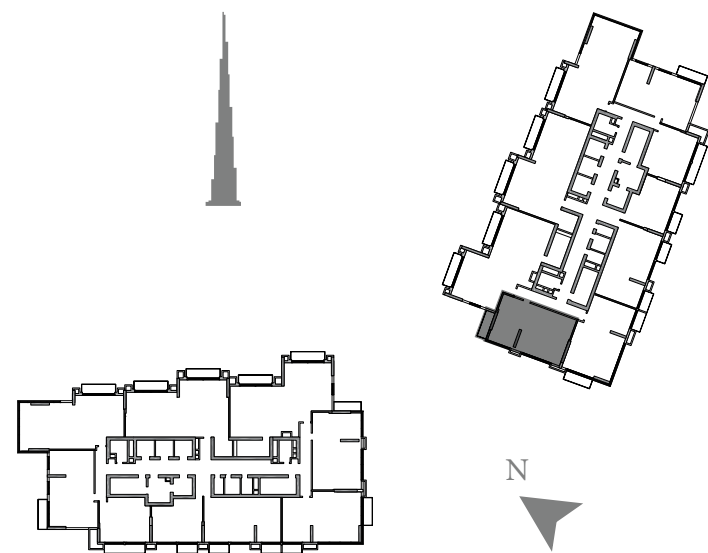


2 BEDROOM - 08

UNIT 02

TOWER 2 - ZONE 2

LEVELS: L16-L27,L29-L32



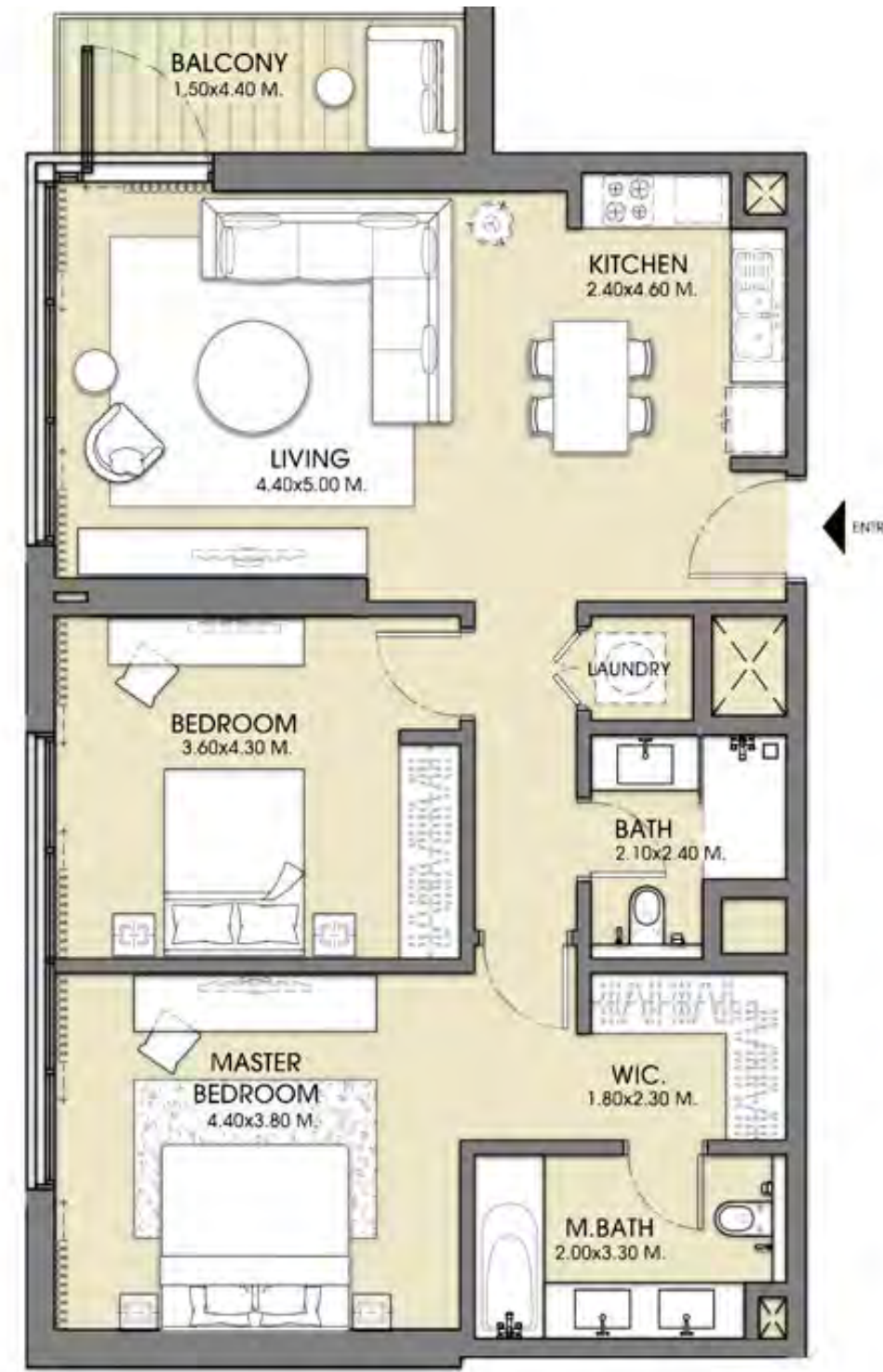
SELLABLE AREA

	sq.m	sq.ft
Suite Area	98.52	1060
Balcony Area	7.71	83
Total Area	106.23	1143

1. All dimensions are in imperial and metric, and measured to structural elements and exclude wall finishes and construction tolerances. 2. All materials, dimensions, and drawings are approximate only. 3. Information is subject to change without notice, at developer's absolute discretion. 4. Actual area may vary from the stated area. 5. Drawings not to scale. 6. All images used are for illustrative purposes only and do not represent the actual size, features, specifications, fittings, and furnishings. 7. The developer reserves the right to make revisions/alterations, at its absolute discretion, without any liability whatsoever.



ACT ONE | ACT TWO

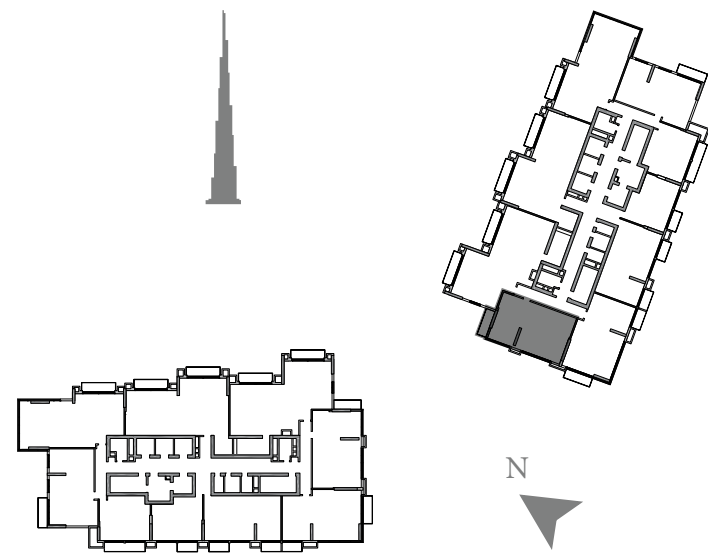


2 BEDROOM - 08

UNIT 02

TOWER 2 - ZONE 2

LEVELS: L33-L38



SELLABLE AREA

	sq.m	sq.ft
Suite Area	98.38	1059
Balcony Area	7.71	83
Total Area	106.09	1142

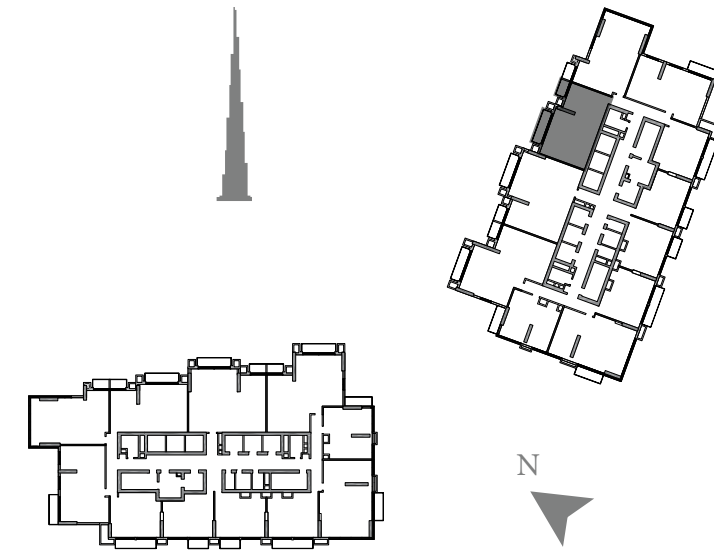
1. All dimensions are in imperial and metric, and measured to structural elements and exclude wall finishes and construction tolerances. 2. All materials, dimensions, and drawings are approximate only. 3. Information is subject to change without notice, at developer's absolute discretion. 4. Actual area may vary from the stated area. 5. Drawings not to scale. 6. All images used are for illustrative purposes only and do not represent the actual size, features, specifications, fittings, and furnishings. 7. The developer reserves the right to make revisions/alterations, at its absolute discretion, without any liability whatsoever.



ACT ONE | ACT TWO



2 BEDROOM - 09      UNIT 10      TOWER 2 - ZONE 1      LEVELS: L06-L10



SELLABLE AREA		
	sq.m	sq.ft
Suite Area	95.27	1025
Balcony Area	13.48	145
Total Area	108.75	1170

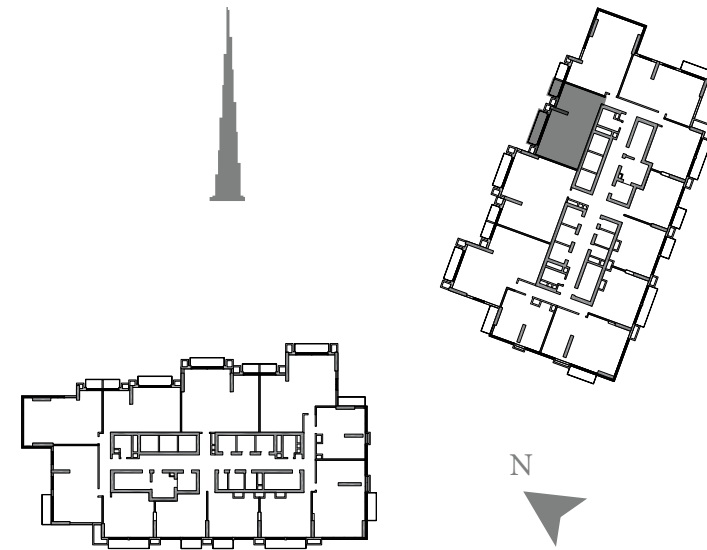
1. All dimensions are in imperial and metric, and measured to structural elements and exclude wall finishes and construction tolerances. 2. All materials, dimensions, and drawings are approximate only. 3. Information is subject to change without notice, at developer's absolute discretion. 4. Actual area may vary from the stated area. 5. Drawings not to scale. 6. All images used are for illustrative purposes only and do not represent the actual size, features, specifications, fittings, and furnishings. 7. The developer reserves the right to make revisions/alterations, at its absolute discretion, without any liability whatsoever.



ACT ONE | ACT TWO



2 BEDROOM - 09A      UNIT 10      TOWER 2 - ZONE 1      LEVELS: L11-L13



SELLABLE AREA		
	sq.m	sq.ft
Suite Area	90.76	977
Balcony Area	13.48	145
Total Area	104.24	1122

1. All dimensions are in imperial and metric, and measured to structural elements and exclude wall finishes and construction tolerances. 2. All materials, dimensions, and drawings are approximate only. 3. Information is subject to change without notice, at developer's absolute discretion. 4. Actual area may vary from the stated area. 5. Drawings not to scale. 6. All images used are for illustrative purposes only and do not represent the actual size, features, specifications, fittings, and furnishings. 7. The developer reserves the right to make revisions/alterations, at its absolute discretion, without any liability whatsoever.



ACT ONE | ACT TWO

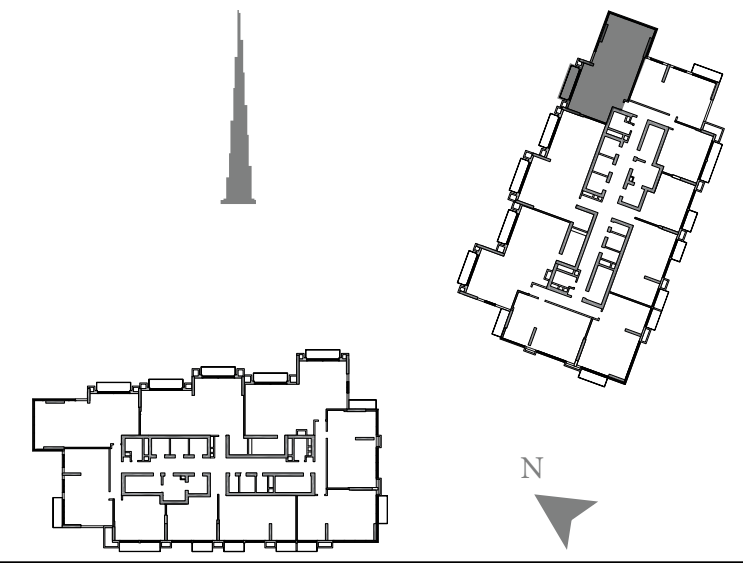


3 BEDROOM - 01

UNIT 08

TOWER 2 - ZONE 2

LEVELS: L16-L27,L29-L38



SELLABLE AREA		
	sq.m	sq.ft
Suite Area	130.98	1410
Balcony Area	8.99	97
Total Area	139.97	1507

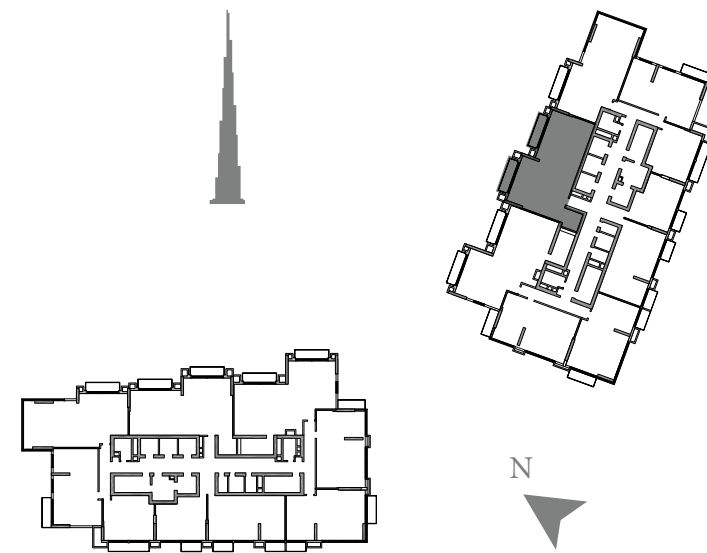
1. All dimensions are in imperial and metric, and measured to structural elements and exclude wall finishes and construction tolerances. 2. All materials, dimensions, and drawings are approximate only. 3. Information is subject to change without notice, at developer's absolute discretion. 4. Actual area may vary from the stated area. 5. Drawings not to scale. 6. All images used are for illustrative purposes only and do not represent the actual size, features, specifications, fittings, and furnishings. 7. The developer reserves the right to make revisions/alterations, at its absolute discretion, without any liability whatsoever.



ACT ONE | ACT TWO



3 BEDROOM - 02      UNIT 09      TOWER 2 - ZONE 2      LEVELS: L16-L20



SELLABLE AREA		
	sq.m	sq.ft
Suite Area	149.44	1609
Balcony Area	17.98	194
Total Area	167.42	1803

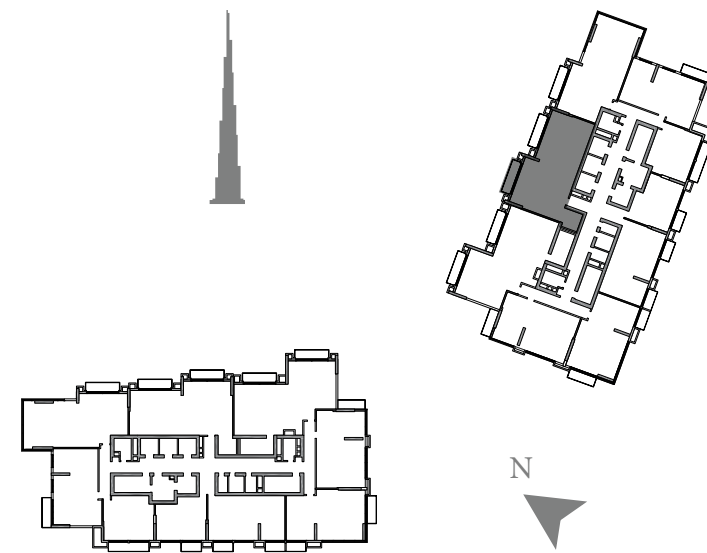
1. All dimensions are in imperial and metric, and measured to structural elements and exclude wall finishes and construction tolerances. 2. All materials, dimensions, and drawings are approximate only. 3. Information is subject to change without notice, at developer's absolute discretion. 4. Actual area may vary from the stated area. 5. Drawings not to scale. 6. All images used are for illustrative purposes only and do not represent the actual size, features, specifications, fittings, and furnishings. 7. The developer reserves the right to make revisions/alterations, at its absolute discretion, without any liability whatsoever.



ACT ONE | ACT TWO



3 BEDROOM - 02A      UNIT 09      TOWER 2 - ZONE 2      LEVELS: L21-L27



SELLABLE AREA	sq.m	sq.ft
	Suite Area	145.44
Balcony Area	17.98	194
Total Area	163.42	1760

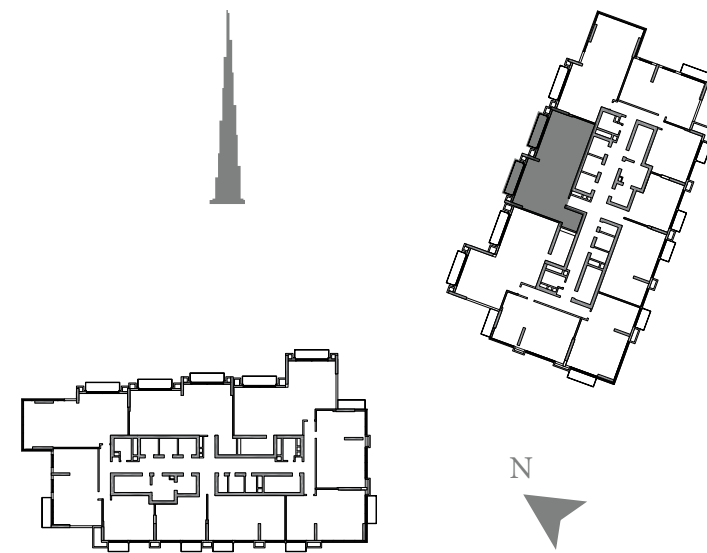
1. All dimensions are in imperial and metric, and measured to structural elements and exclude wall finishes and construction tolerances. 2. All materials, dimensions, and drawings are approximate only. 3. Information is subject to change without notice, at developer's absolute discretion. 4. Actual area may vary from the stated area. 5. Drawings not to scale. 6. All images used are for illustrative purposes only and do not represent the actual size, features, specifications, fittings, and furnishings. 7. The developer reserves the right to make revisions/alterations, at its absolute discretion, without any liability whatsoever.



ACT ONE | ACT TWO



3 BEDROOM - 02B      UNIT 09      TOWER 2 - ZONE 2      LEVELS: L29-L32



SELLABLE AREA		
	sq.m	sq.ft
Suite Area	145.72	1569
Balcony Area	17.98	194
Total Area	163.70	1763

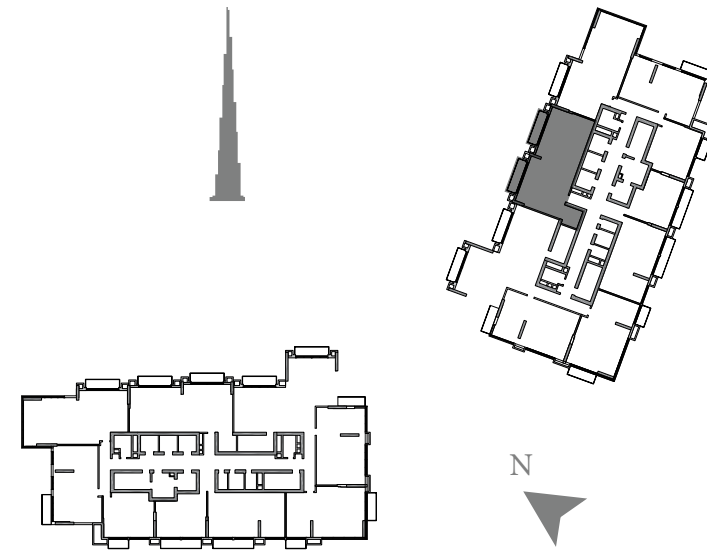
1. All dimensions are in imperial and metric, and measured to structural elements and exclude wall finishes and construction tolerances. 2. All materials, dimensions, and drawings are approximate only. 3. Information is subject to change without notice, at developer's absolute discretion. 4. Actual area may vary from the stated area. 5. Drawings not to scale. 6. All images used are for illustrative purposes only and do not represent the actual size, features, specifications, fittings, and furnishings. 7. The developer reserves the right to make revisions/alterations, at its absolute discretion, without any liability whatsoever.



ACT ONE | ACT TWO



3 BEDROOM - 02C      UNIT 09      TOWER 2 - ZONE 2      LEVELS: L33-L35



SELLABLE AREA		
	sq.m	sq.ft
Suite Area	141.66	1525
Balcony Area	17.98	194
Total Area	159.64	1719

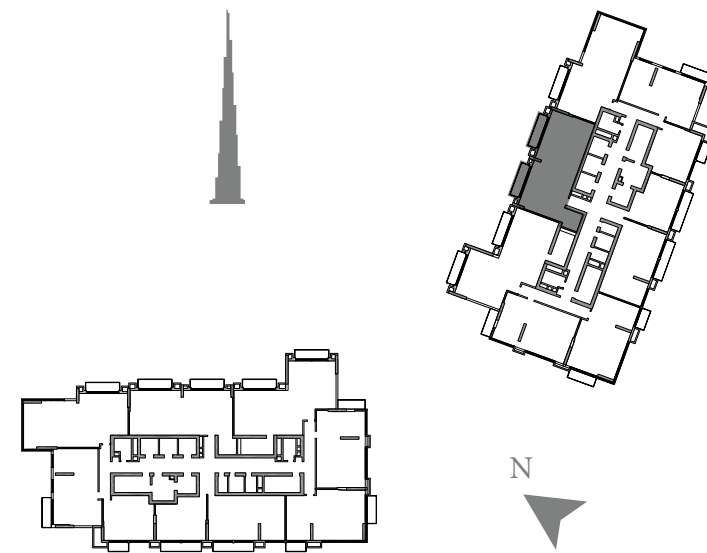
1. All dimensions are in imperial and metric, and measured to structural elements and exclude wall finishes and construction tolerances. 2. All materials, dimensions, and drawings are approximate only. 3. Information is subject to change without notice, at developer's absolute discretion. 4. Actual area may vary from the stated area. 5. Drawings not to scale. 6. All images used are for illustrative purposes only and do not represent the actual size, features, specifications, fittings, and furnishings. 7. The developer reserves the right to make revisions/alterations, at its absolute discretion, without any liability whatsoever.



ACT ONE | ACT TWO



3 BEDROOM - 02D      UNIT 09      TOWER 2 - ZONE 2      LEVELS: L36-L38



SELLABLE AREA	sq.m	sq.ft
	Suite Area	137.66
Balcony Area	17.98	194
Total Area	155.64	1676

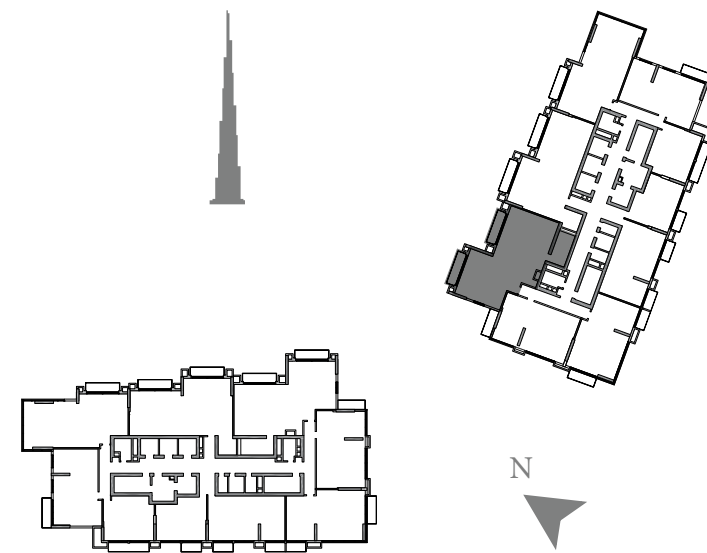
1. All dimensions are in imperial and metric, and measured to structural elements and exclude wall finishes and construction tolerances. 2. All materials, dimensions, and drawings are approximate only. 3. Information is subject to change without notice, at developer's absolute discretion. 4. Actual area may vary from the stated area. 5. Drawings not to scale. 6. All images used are for illustrative purposes only and do not represent the actual size, features, specifications, fittings, and furnishings. 7. The developer reserves the right to make revisions/alterations, at its absolute discretion, without any liability whatsoever.



ACT ONE | ACT TWO



3 BEDROOM - 03      UNIT 01      TOWER 2 - ZONE 2      LEVELS: L16-L23



SELLABLE AREA	sq.m	sq.ft
	Suite Area	156.82
Balcony Area	17.98	194
Total Area	174.80	1882

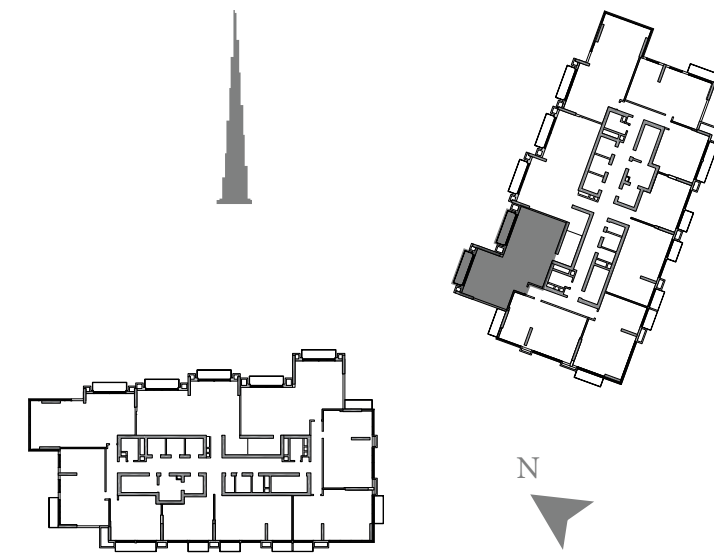
1. All dimensions are in imperial and metric, and measured to structural elements and exclude wall finishes and construction tolerances. 2. All materials, dimensions, and drawings are approximate only. 3. Information is subject to change without notice, at developer's absolute discretion. 4. Actual area may vary from the stated area. 5. Drawings not to scale. 6. All images used are for illustrative purposes only and do not represent the actual size, features, specifications, fittings, and furnishings. 7. The developer reserves the right to make revisions/alterations, at its absolute discretion, without any liability whatsoever.



ACT ONE | ACT TWO



3 BEDROOM - 03A      UNIT 01      TOWER 2 - ZONE 2      LEVELS: L24-L27,L29-L30



SELLABLE AREA		
	sq.m	sq.ft
Suite Area	152.76	1644
Balcony Area	17.98	194
Total Area	170.74	1838

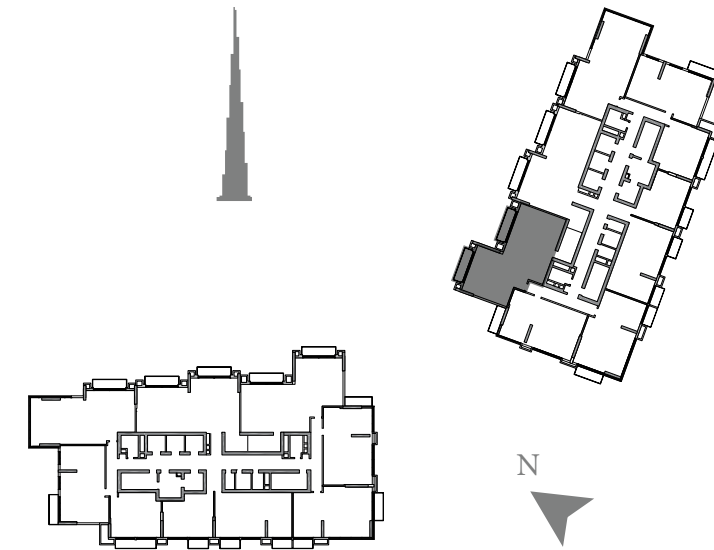
1. All dimensions are in imperial and metric, and measured to structural elements and exclude wall finishes and construction tolerances. 2. All materials, dimensions, and drawings are approximate only. 3. Information is subject to change without notice, at developer's absolute discretion. 4. Actual area may vary from the stated area. 5. Drawings not to scale. 6. All images used are for illustrative purposes only and do not represent the actual size, features, specifications, fittings, and furnishings. 7. The developer reserves the right to make revisions/alterations, at its absolute discretion, without any liability whatsoever.



ACT ONE | ACT TWO



3 BEDROOM - 03A      UNIT 01      TOWER 2 - ZONE 2      LEVELS: L24-L27,L29-L30



SELLABLE AREA		
	sq.m	sq.ft
Suite Area	152.76	1644
Balcony Area	17.98	194
Total Area	170.74	1838

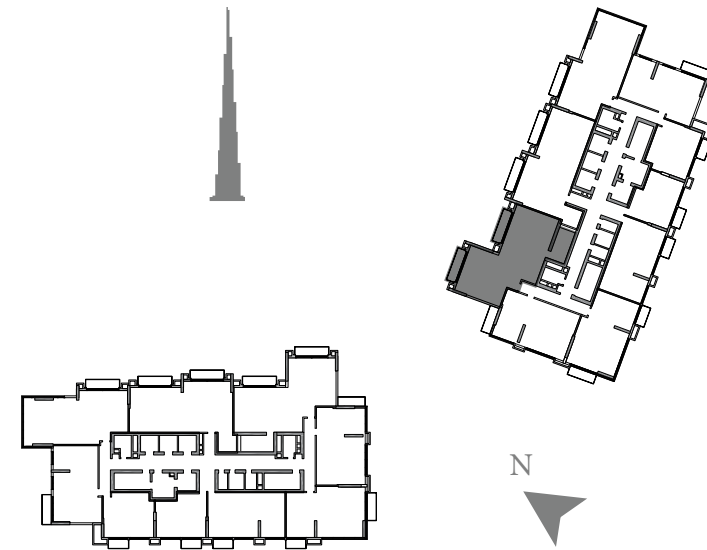
1. All dimensions are in imperial and metric, and measured to structural elements and exclude wall finishes and construction tolerances. 2. All materials, dimensions, and drawings are approximate only. 3. Information is subject to change without notice, at developer's absolute discretion. 4. Actual area may vary from the stated area. 5. Drawings not to scale. 6. All images used are for illustrative purposes only and do not represent the actual size, features, specifications, fittings, and furnishings. 7. The developer reserves the right to make revisions/alterations, at its absolute discretion, without any liability whatsoever.



ACT ONE | ACT TWO



3 BEDROOM - 03B      UNIT 01      TOWER 2 - ZONE 2      LEVELS: L31-L32



SELLABLE AREA		
	sq.m	sq.ft
Suite Area	148.63	1600
Balcony Area	17.98	194
Total Area	166.61	1794

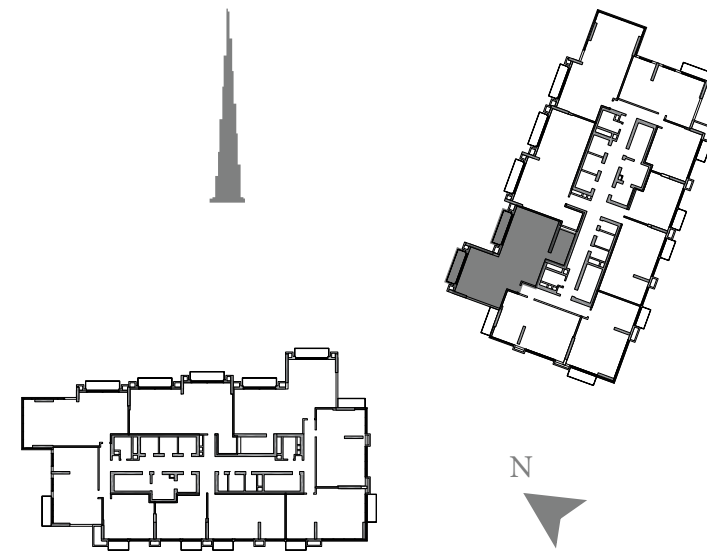
1. All dimensions are in imperial and metric, and measured to structural elements and exclude wall finishes and construction tolerances. 2. All materials, dimensions, and drawings are approximate only. 3. Information is subject to change without notice, at developer's absolute discretion. 4. Actual area may vary from the stated area. 5. Drawings not to scale. 6. All images used are for illustrative purposes only and do not represent the actual size, features, specifications, fittings, and furnishings. 7. The developer reserves the right to make revisions/alterations, at its absolute discretion, without any liability whatsoever.



ACT ONE | ACT TWO



3 BEDROOM - 03C      UNIT 01      TOWER 2 - ZONE 2      LEVELS: L33-L38



SELLABLE AREA	sq.m	sq.ft
	Suite Area	148.83
Balcony Area	17.98	194
Total Area	166.81	1796

1. All dimensions are in imperial and metric, and measured to structural elements and exclude wall finishes and construction tolerances. 2. All materials, dimensions, and drawings are approximate only. 3. Information is subject to change without notice, at developer's absolute discretion. 4. Actual area may vary from the stated area. 5. Drawings not to scale. 6. All images used are for illustrative purposes only and do not represent the actual size, features, specifications, fittings, and furnishings. 7. The developer reserves the right to make revisions/alterations, at its absolute discretion, without any liability whatsoever.



**BOOK YOUR INTEREST**

**+971 55 837 7712**

**sales@drehomes.com**

**Visit Us For More Info:-**

**<http://act-one-two.drehomes.ae/>**