



ARLINGTON PARK

MAJID

A close-up photograph of a woman's face, partially hidden behind large, vibrant green leaves. Her blue eyes are visible, looking directly at the camera. The background is a soft-focus forest scene with sunlight filtering through the trees, creating a bokeh effect of light and shadow. The overall mood is serene and natural.

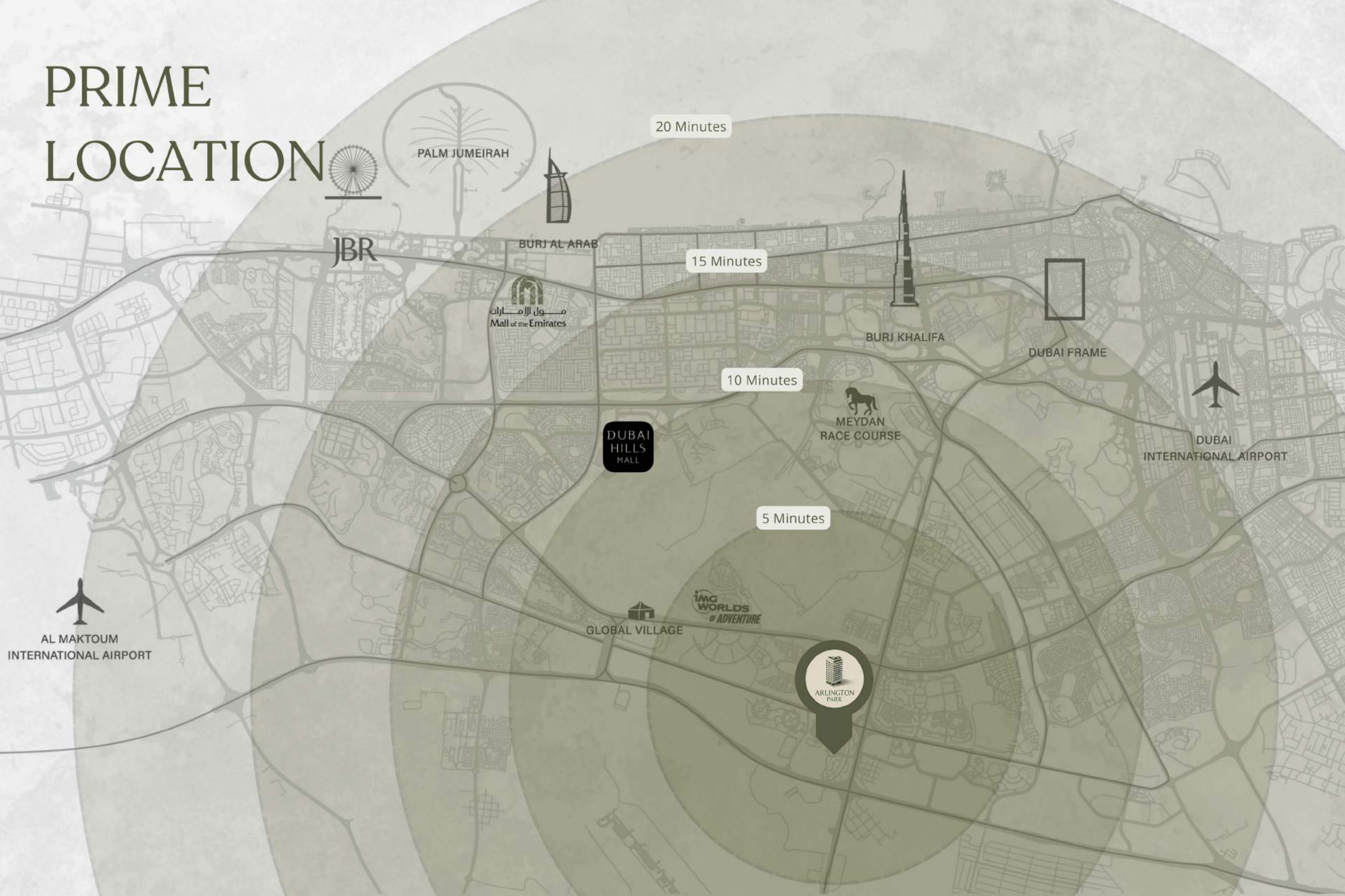
WHERE URBAN
EASE MEETS
NATURAL PEACE

AT THE CENTRE OF POSSIBILITY

Dubai Land Residence Complex, one of Dubai's most promising residential zones. It offers a lifestyle that is close to everything yet, away from the noise. Whether it's a quick commute to Downtown, a peaceful walk in lush surroundings, or access to daily conveniences, Arlington Park places you where it all flows together.



PRIME LOCATION



PALM JUMEIRAH

JBR

BURJ AL ARAB

مول الإمارات
Mall of the Emirates

15 Minutes

BURJ KHALIFA

DUBAI FRAME

10 Minutes

MEYDAN
RACE COURSE

DUBAI
INTERNATIONAL AIRPORT

DUBAI
HILLS
MALL

5 Minutes

GLOBAL VILLAGE

IMG
WORLDS
of ADVENTURE

ARLINGTON
PARK

AL MAKTOUM
INTERNATIONAL AIRPORT

NEAR
EVERYTHING.
FAR FROM
ORDINARY.



Perfectly positioned in the heart of Dubai Land Residential Complex (DLRC), Arlington Park places you just minutes away from the places that matter most. From top-tier schools and academic hubs to vibrant shopping destinations and healthcare centers.

Whether you're planning your child's future, your next grocery run, or a relaxed weekend at the mall, everything is effortlessly within reach.

- The Aquila School – 1 minute
- GEMS FirstPoint School – The Villa – 3 minutes
- Silicon Central Mall – 7 minutes
- Dubai Silicon Oasis – 9 minutes
- Dubai International Academic City – 9 minutes



GREENSPACE, GROUNDED LIVING

The Dubai Land Residence Complex community offers an expansive network of parks, walking trails, and landscaped pockets to unwind and reconnect.

Arlington Park benefits from:

Access to
landscaped parks

Jogging paths &
cycling zones

Pet-friendly zones &
shaded areas

Open-air fitness and
gathering spaces

WELCOME TO ARLINGTON PARK

Arlington Park offers modern apartment living in Dubai Land. The tower rises with purpose, home to 140 fully optimized apartments across studios, one- and two-bedroom layouts.

Every element is tailored to complement the rhythm of everyday life, from smart unit sizing to premium finishes and lifestyle-oriented spaces.



A woman with long, wavy, reddish-brown hair is seen from behind, standing in a lush green field. She is wearing a white, tiered, sleeveless dress. Her arms are raised high, palms facing forward, in a gesture of openness or prayer. The background is a bright, hazy sunset or sunrise, with the sun low on the horizon to the right, creating a strong lens flare and illuminating the scene with a warm, golden light. The foliage in the background is out of focus, showing various shades of green. The overall mood is peaceful and serene.

IN THE
PRESENCE
OF PEACE

LIFESTYLE ON EVERY LEVEL

From rooftop retreats to indoor vitality zones, Arlington Park transforms your lifestyle into a daily experience of comfort, energy, and leisure.





ARLINGTON
PARK

GRAND ENTRANCE



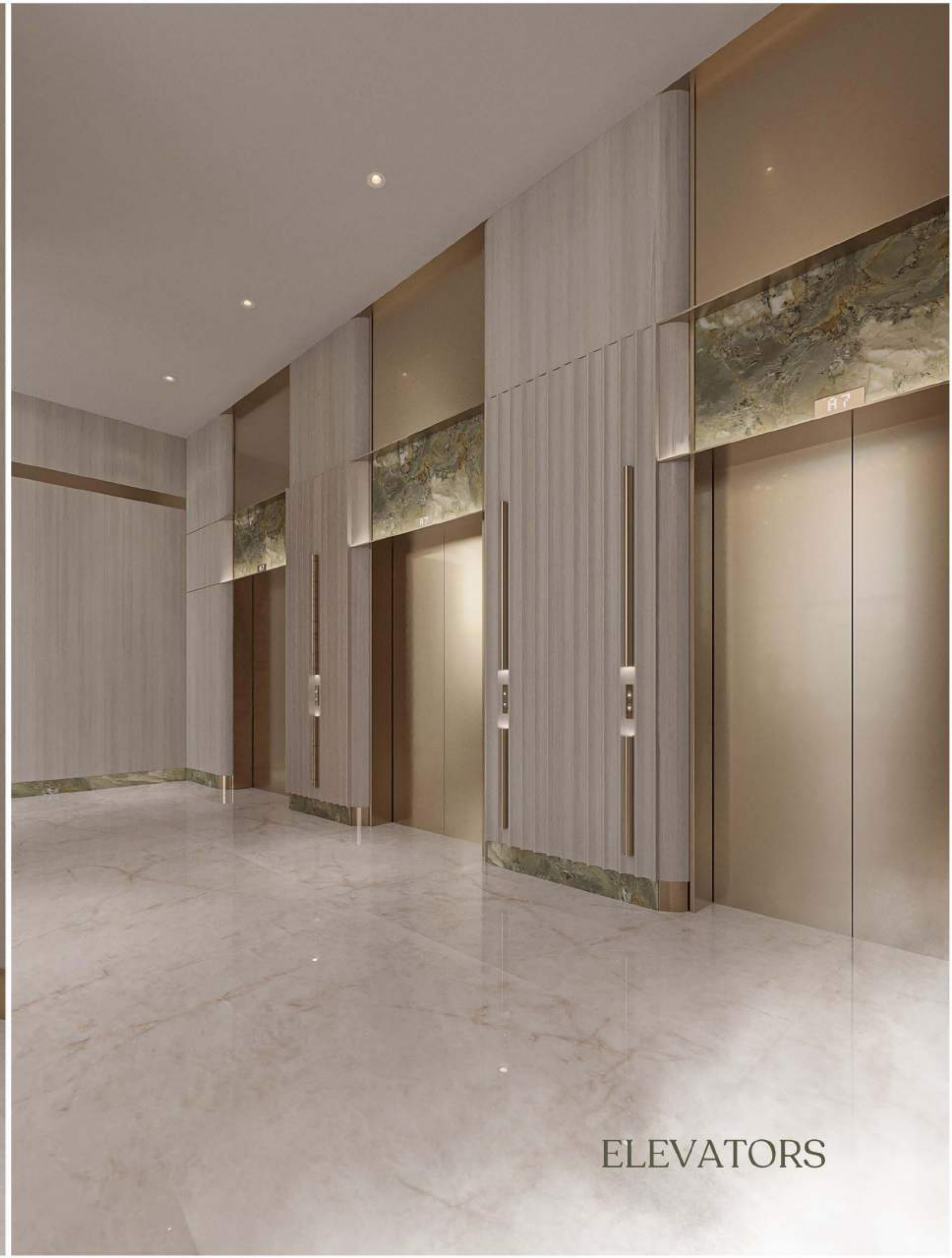
ARLINGTON
PARK



LOBBY LOUNGE



ARLINGTON
PARK



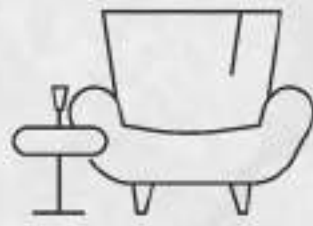
ELEVATORS



LEISURE & WELLNESS ABOVE ALL

At Arlington Park, leisure is a pillar. Calm mornings meet indulgent evenings. From energizing workouts to serene rooftop moments, every amenity is designed to elevate your wellbeing. Dive in, unwind, and savor life above the city.

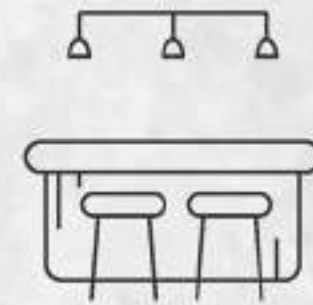
AMENITIES



Exclusive Lounge



Community & Park View



Chic Bar Area



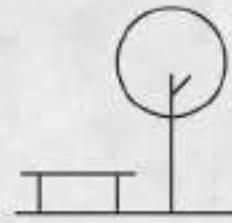
Infinity Pool



Gymnasium



Yoga Space



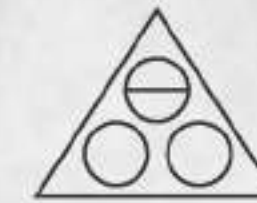
Lush Garden Spaces



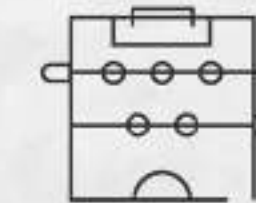
Barbeque Area



Sauna room



Pool Table



Foosball Table



Cold plunge



ARLINGTON
PARK

GYMNASIUM



ARLINGTON
PARK



CO WORKING SPACES

ARLINGTON
PARK



ARLINGTON
PARK

LOUNGE & COFFEE BAR

GAME
ZONE

ARLINGTON
PARK

GAME ZONE



ARLINGTON
PARK

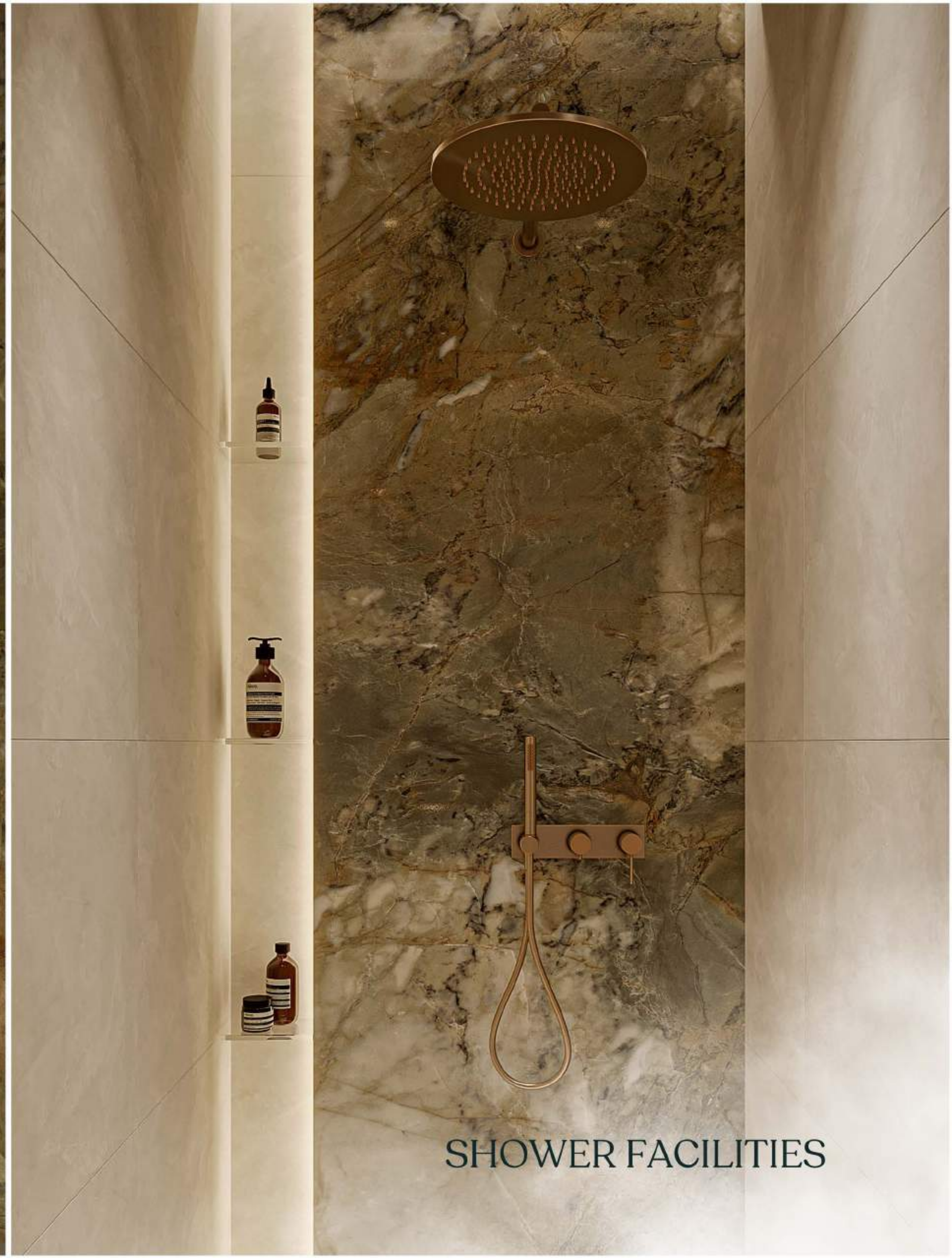


SAUNA & STEAM ROOMS





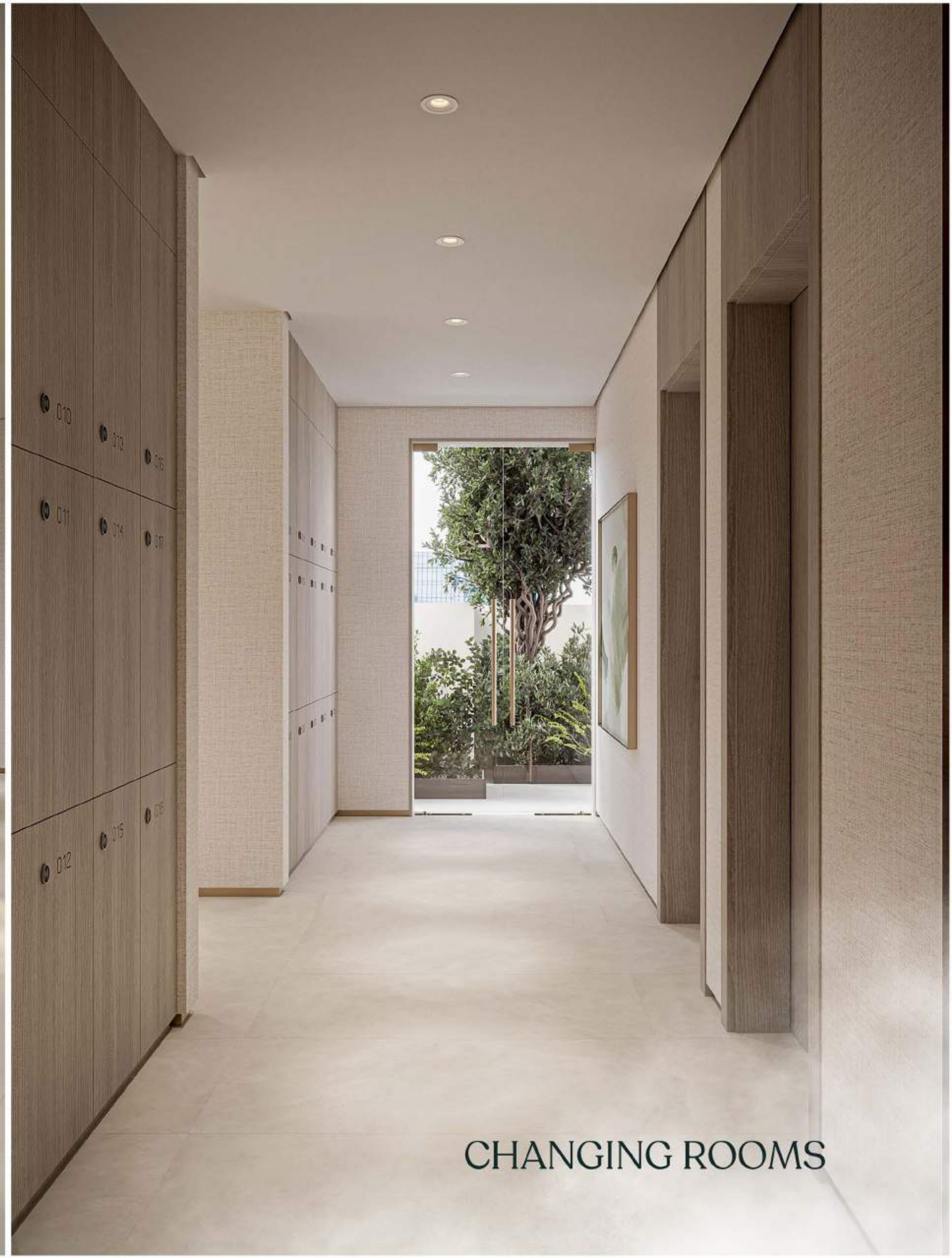
ARLINGTON
PARK



SHOWER FACILITIES



ARLINGTON
PARK



CHANGING ROOMS



ARLINGTON
PARK

INFINITY POOL



ARLINGTON
PARK





THE RESIDENCES

Each apartment at Arlington Park is delivered fully furnished. Ensuring your space reflects your taste and comfort. Each unit is a modern canvas designed with sunlit layouts, serene finishes, and efficient flow.

CURATED STUDIO RESIDENCES



Sleek studio with warm neutral tones, modern finishes, soft lighting, custom cabinetry, and a cozy layout that blends luxury, functionality, and timeless aesthetic in perfect harmony.





ARLINGTON
PARK

LIVING AREA









ARLINGTON
PARK



KITCHEN

ARLINGTON
PARK





ARLINGTON
PARK

CURATED ONE & TWO- BEDROOM RESIDENCES



Spacious residences adorned with warm neutral palettes, refined finishes, ambient lighting, and bespoke cabinetry. Thoughtfully designed to blend luxury, practicality, and timeless elegance for modern living.



ARLINGTON
PARK

LIVING ROOM







ARLINGTON
PARK

KITCHEN









MASTER BATHROOMS



SECONDARY BEDROOM

ARLINGTON PARK

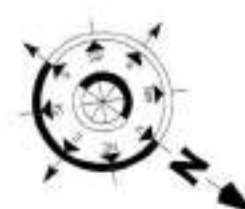
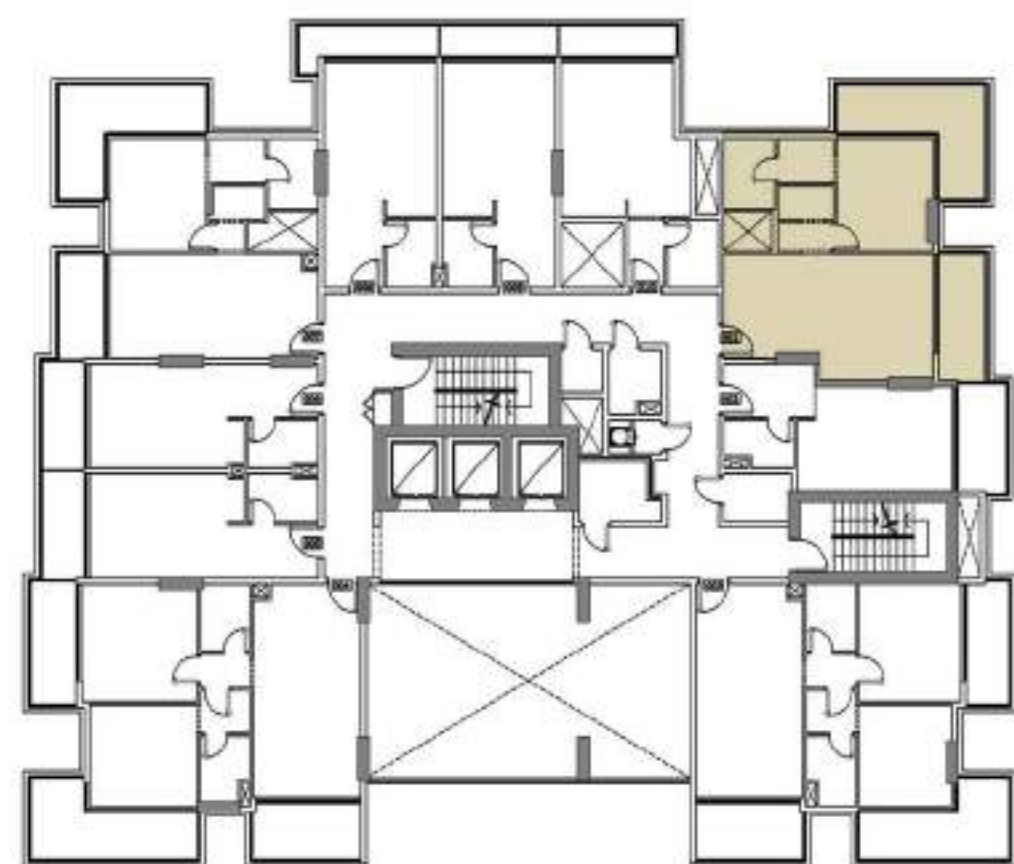
NEIGHBOUR 50.00M



FIRST FLOOR PLAN

Disclaimer: all pictures, plans, layouts, information, data and details included in this brochure are indicative only and may change at any time up to the final 'as built' status in accordance with the final designs of the project, regulatory approvals and planning permissions.

ARLINGTON PARK



1st FLOOR 1 BEDROOM APARTMENT

UNIT AREA 660 Sq. ft.

TERR/BAL AREA 241 Sq. ft.

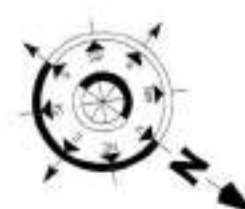
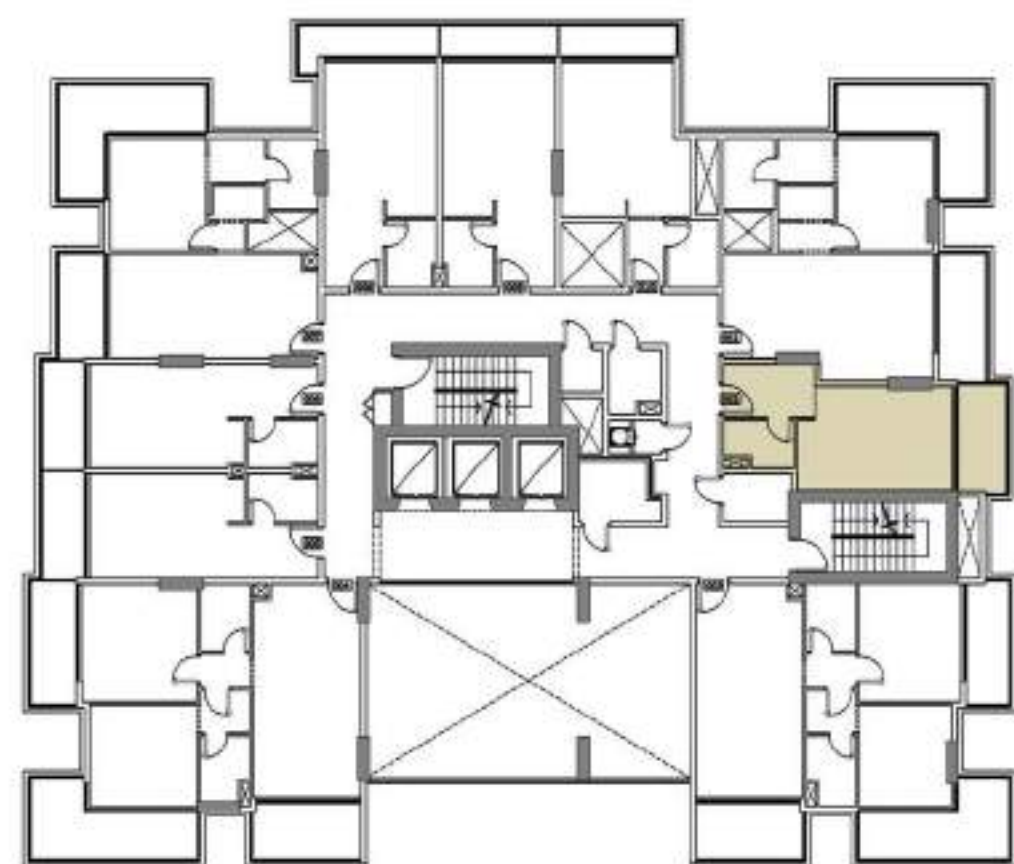
TOTAL AREA 901 Sq. ft.

UNITS 101

Disclaimer: all pictures, plans, layouts, information, data and details included in this brochure are indicative only and may change at any time up to the final 'as built' status in accordance with the final designs of the project, regulatory approvals and planning permissions.



ARLINGTON PARK



1st FLOOR STUDIO APARTMENT

UNIT AREA 356 Sq. ft.

TERR/BAL AREA 77 Sq. ft.

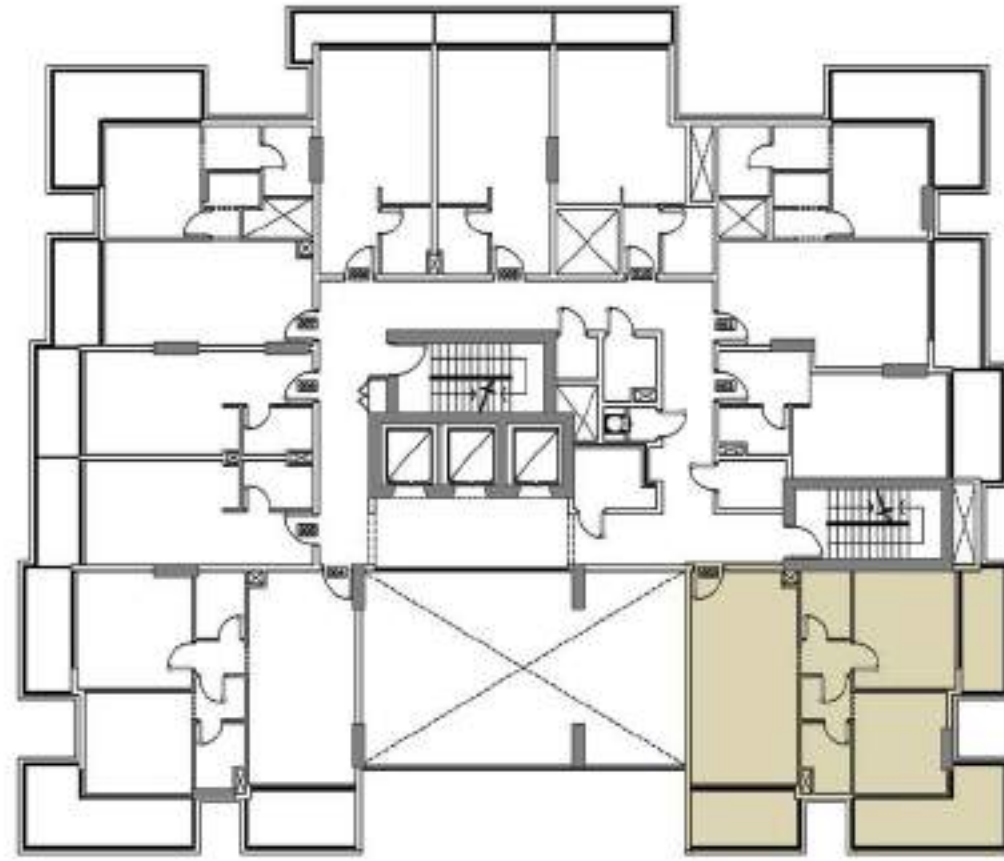
TOTAL AREA 433 Sq. ft.

UNITS 102

Disclaimer: all pictures, plans, layouts, information, data and details included in this brochure are indicative only and may change at any time up to the final 'as built' status in accordance with the final designs of the project, regulatory approvals and planning permissions.



ARLINGTON PARK



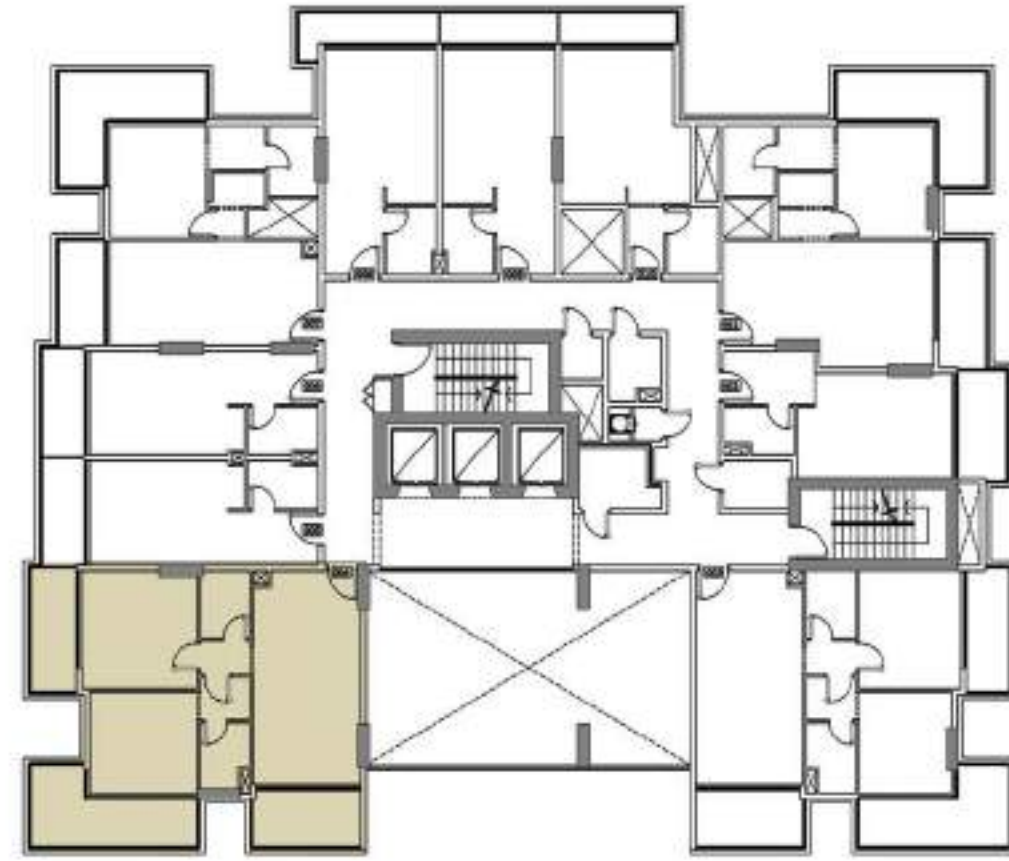
1st FLOOR 2 BEDROOM APARTMENT

UNIT AREA	809 Sq. ft.
TERR/BAL AREA	296 Sq. ft.
TOTAL AREA	1105 Sq. ft.
UNITS	103

Disclaimer: all pictures, plans, layouts, information, data and details included in this brochure are indicative only and may change at any time up to the final 'as built' status in accordance with the final designs of the project, regulatory approvals and planning permissions.



ARLINGTON PARK



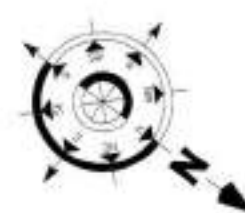
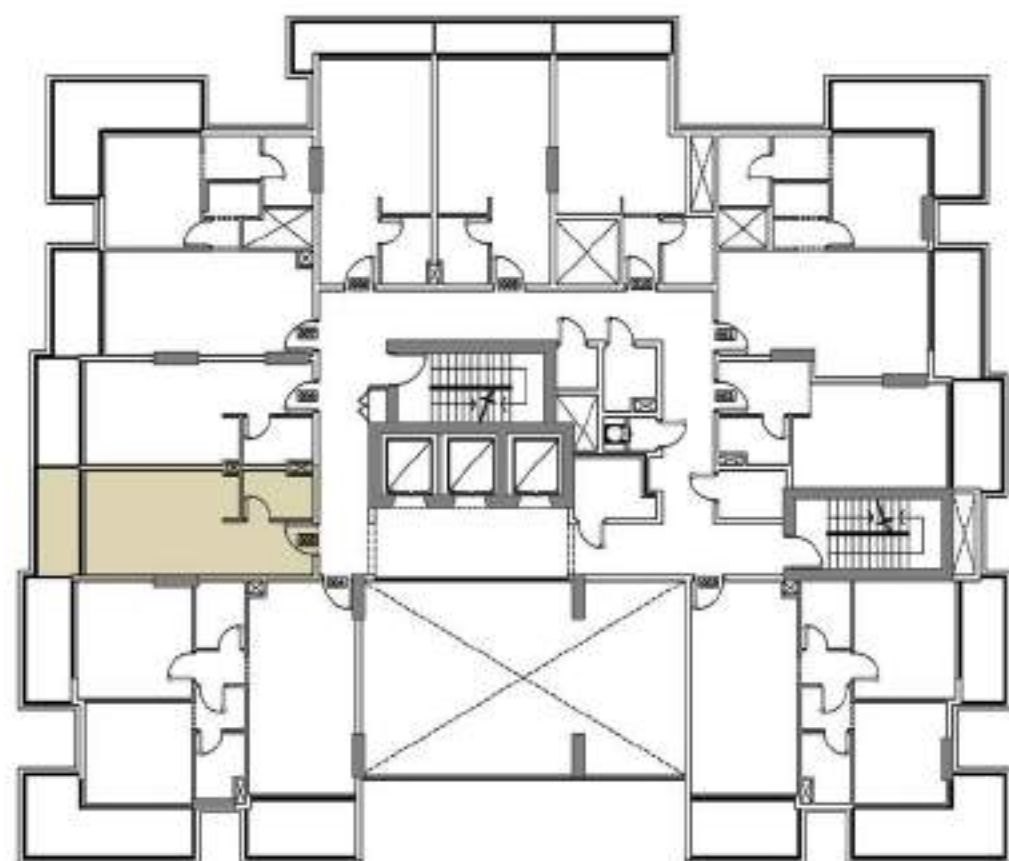
1st FLOOR 2 BEDROOM APARTMENT

UNIT AREA	847 Sq. ft.
TERR/BAL AREA	314 Sq. ft.
TOTAL AREA	1161 Sq. ft.
UNITS	104

Disclaimer: all pictures, plans, layouts, information, data and details included in this brochure are indicative only and may change at any time up to the final 'as built' status in accordance with the final designs of the project, regulatory approvals and planning permissions.



ARLINGTON PARK



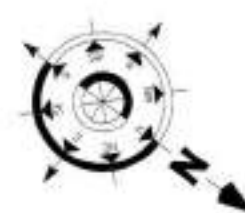
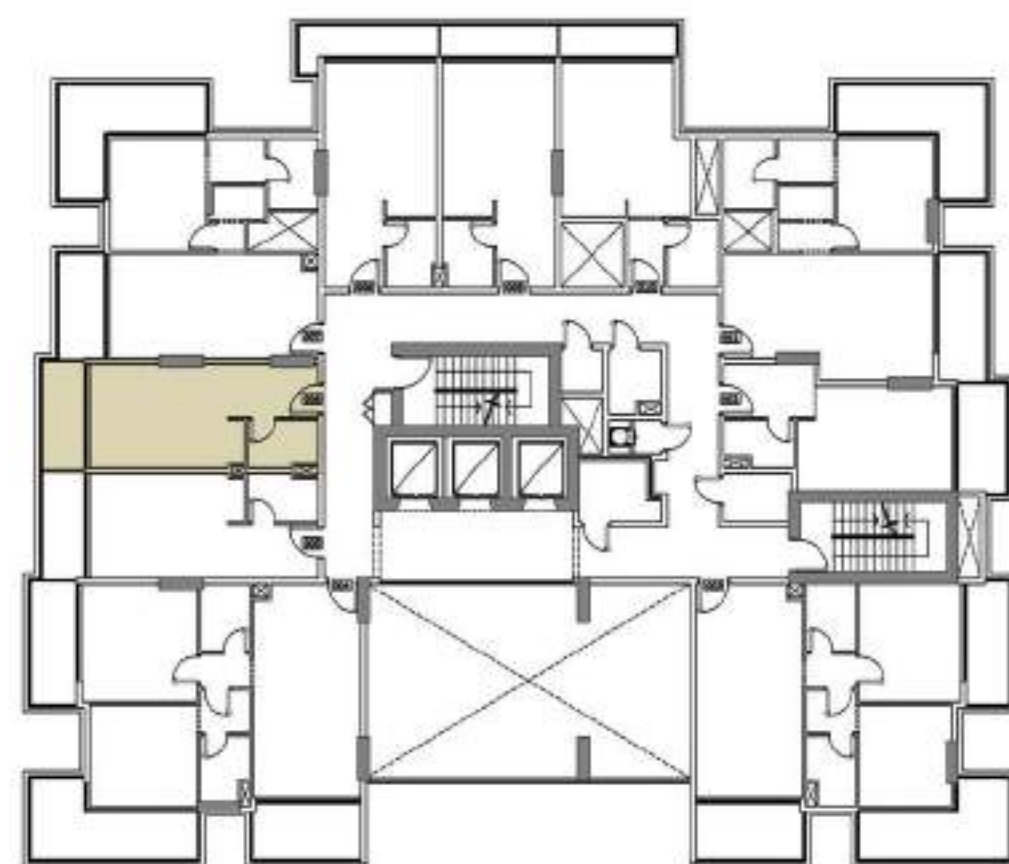
1st FLOOR STUDIO APARTMENT



UNIT AREA	345 Sq. ft.
TERR/BAL AREA	68 Sq. ft.
TOTAL AREA	413 Sq. ft.
UNITS	105

Disclaimer: all pictures, plans, layouts, information, data and details included in this brochure are indicative only and may change at any time up to the final 'as built' status in accordance with the final designs of the project, regulatory approvals and planning permissions.

ARLINGTON PARK



1st FLOOR STUDIO APARTMENT



UNIT AREA 345 Sq. ft.

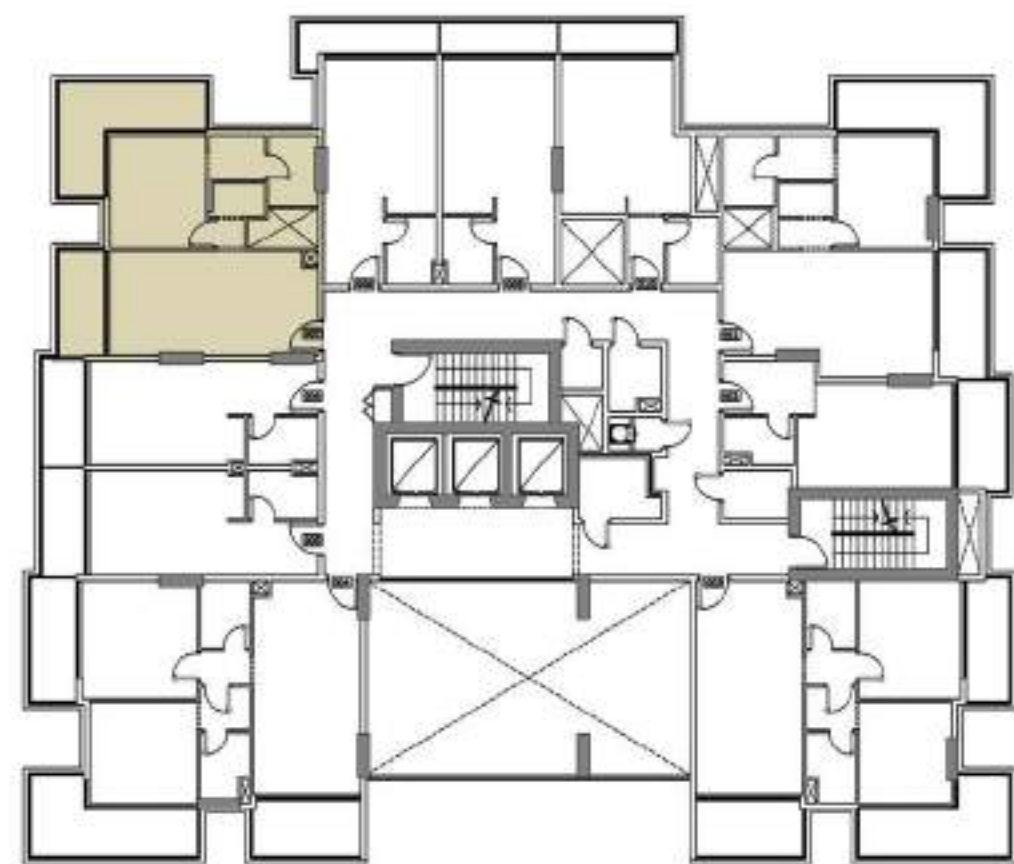
TERR/BAL AREA 68 Sq. ft.

TOTAL AREA 413 Sq. ft.

UNITS 106

Disclaimer: all pictures, plans, layouts, information, data and details included in this brochure are indicative only and may change at any time up to the final 'as built' status in accordance with the final designs of the project, regulatory approvals and planning permissions.

ARLINGTON PARK



1st FLOOR 1 BEDROOM APARTMENT

UNIT AREA 610 Sq. ft.

TERR/BAL AREA 216 Sq. ft.

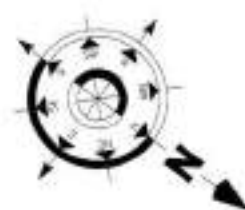
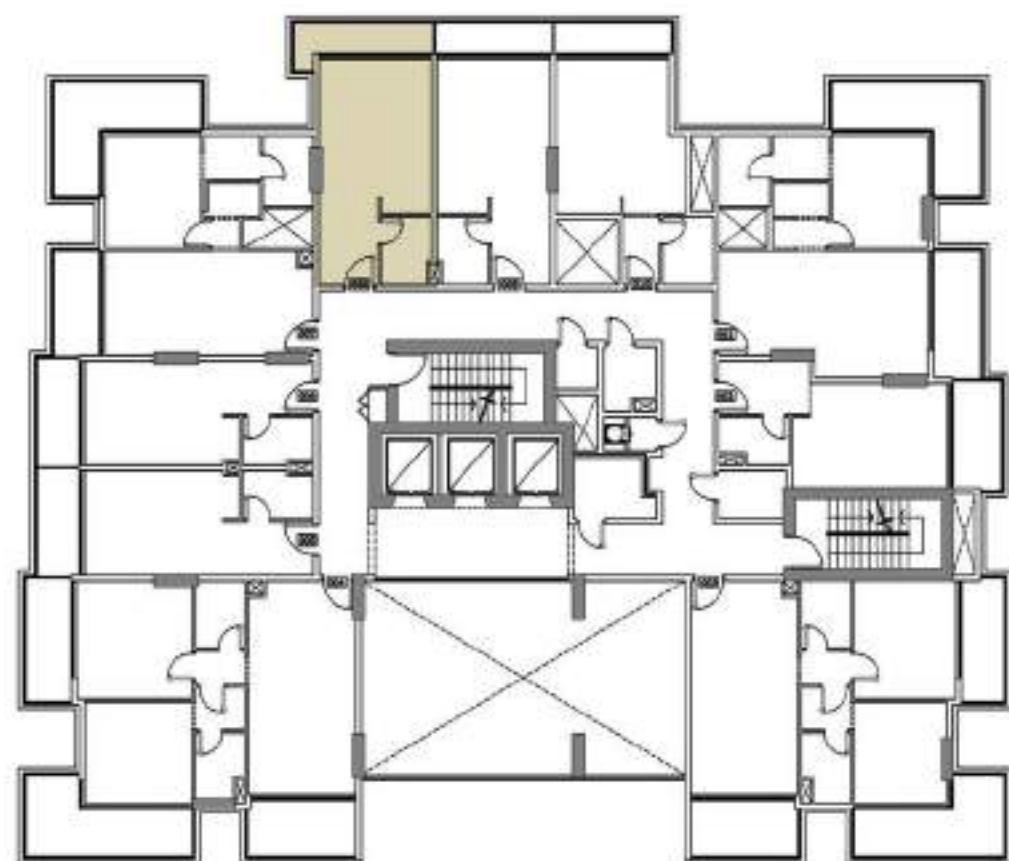
TOTAL AREA 826 Sq. ft.

UNITS 107

Disclaimer: all pictures, plans, layouts, information, data and details included in this brochure are indicative only and may change at any time up to the final 'as built' status in accordance with the final designs of the project, regulatory approvals and planning permissions.



ARLINGTON PARK



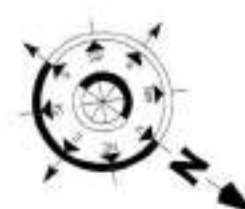
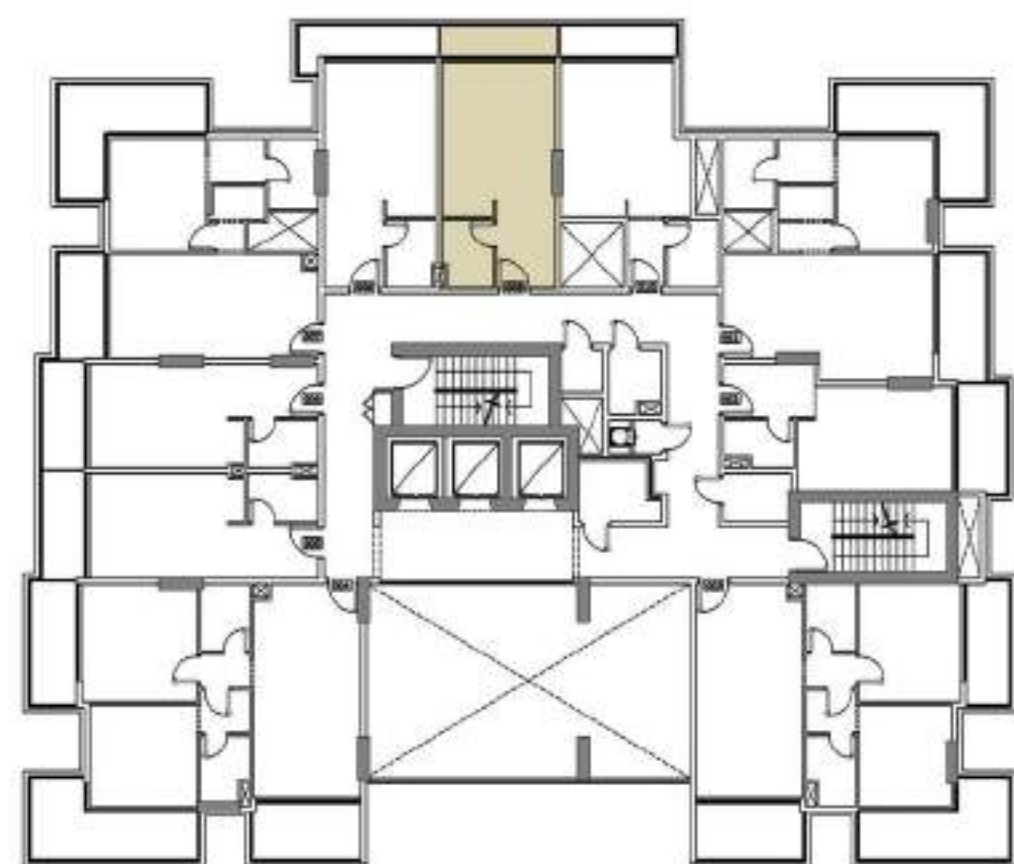
1st FLOOR STUDIO APARTMENT

UNIT AREA	369 Sq. ft.
TERR/BAL AREA	71 Sq. ft.
TOTAL AREA	440 Sq. ft.
UNITS	108

Disclaimer: all pictures, plans, layouts, information, data and details included in this brochure are indicative only and may change at any time up to the final 'as built' status in accordance with the final designs of the project, regulatory approvals and planning permissions.



ARLINGTON PARK



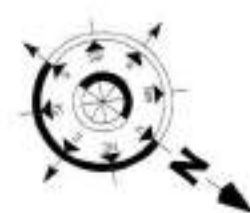
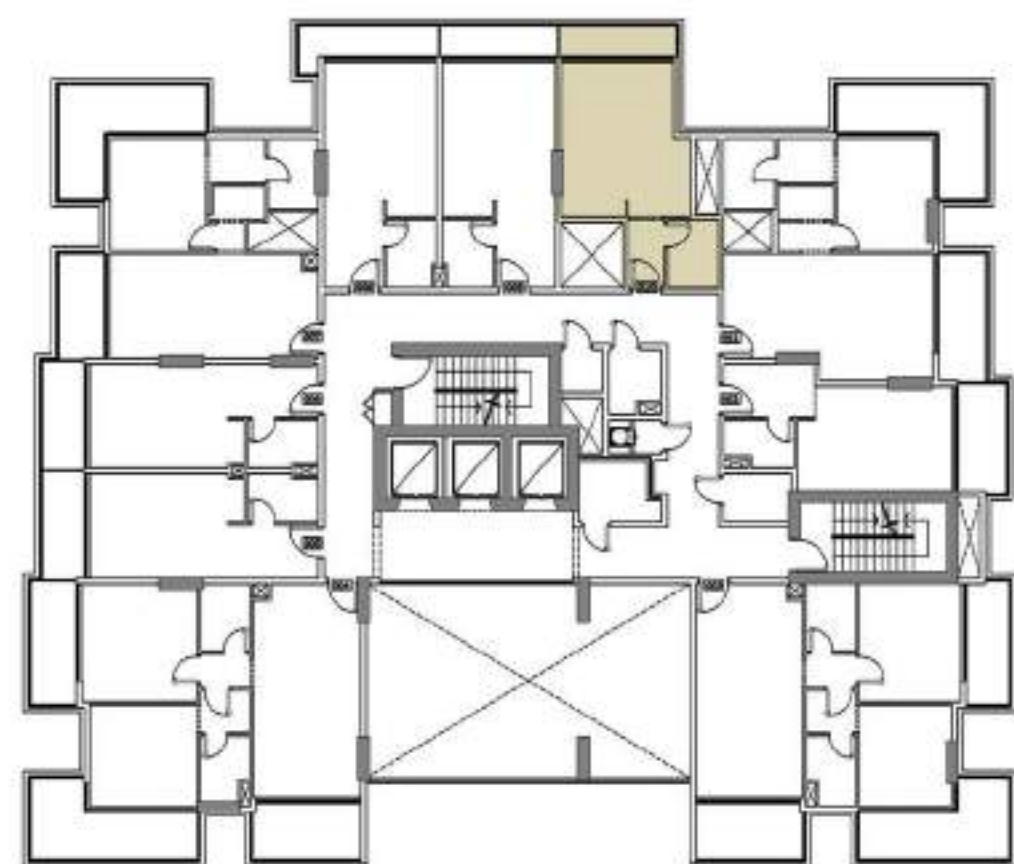
1st FLOOR STUDIO APARTMENT

UNIT AREA	369 Sq. ft.
TERR/BAL AREA	55 Sq. ft.
TOTAL AREA	424 Sq. ft.
UNITS	109

Disclaimer: all pictures, plans, layouts, information, data and details included in this brochure are indicative only and may change at any time up to the final 'as built' status in accordance with the final designs of the project, regulatory approvals and planning permissions.



ARLINGTON PARK



1st FLOOR STUDIO APARTMENT

UNIT AREA	370 Sq. ft.
TERR/BAL AREA	56 Sq. ft.
TOTAL AREA	426 Sq. ft.
UNITS	110

Disclaimer: all pictures, plans, layouts, information, data and details included in this brochure are indicative only and may change at any time up to the final 'as built' status in accordance with the final designs of the project, regulatory approvals and planning permissions.



ARLINGTON PARK

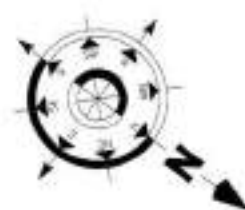
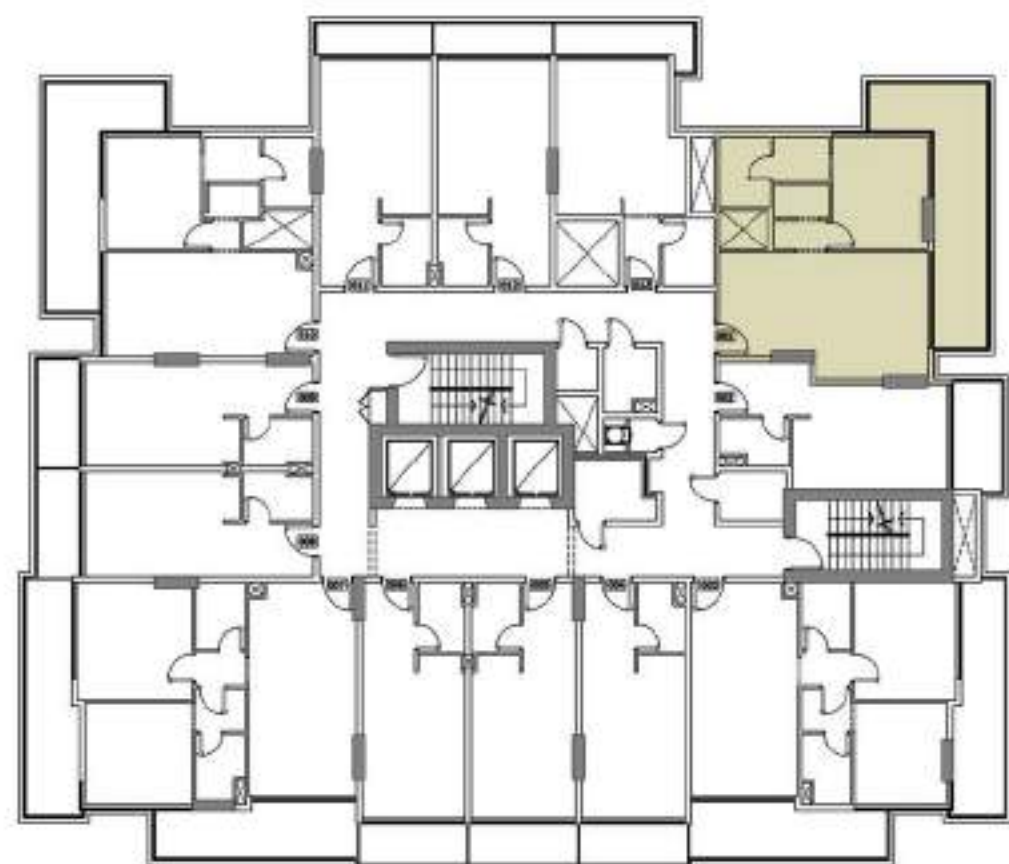
NEIGHBOUR 50.00M



TYPICAL FLOOR PLAN (2,4,6,8 & 10)

Disclaimer: all pictures, plans, layouts, information, data and details included in this brochure are indicative only and may change at any time up to the final 'as built' status in accordance with the final designs of the project, regulatory approvals and planning permissions.

ARLINGTON PARK



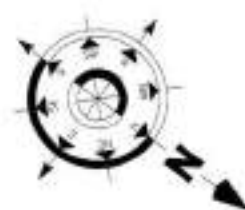
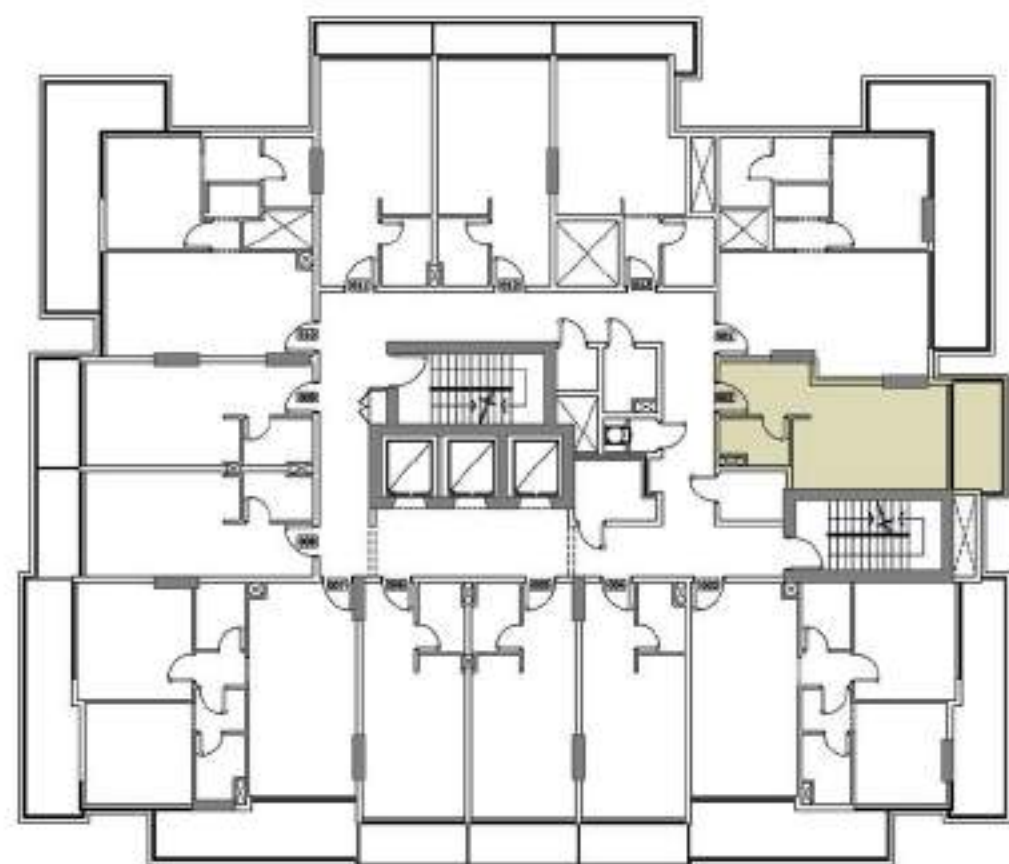
TYPICAL (2,4,6,8 & 10) FLOOR 1 BEDROOM APARTMENTS

UNIT AREA	660 Sq. ft.
TERR/BAL AREA	250 Sq. ft.
TOTAL AREA	910 Sq. ft.
UNITS	201,401,601,801 & 1001

Disclaimer: all pictures, plans, layouts, information, data and details included in this brochure are indicative only and may change at any time up to the final 'as built' status in accordance with the final designs of the project, regulatory approvals and planning permissions.



ARLINGTON PARK



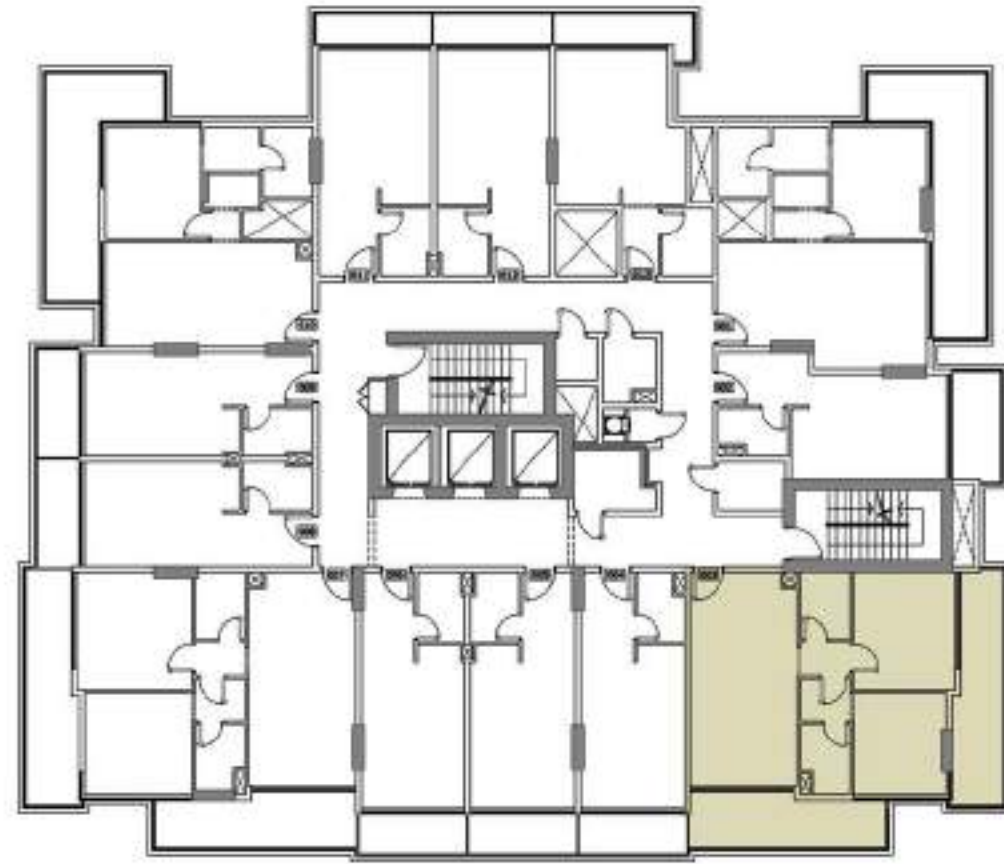
TYPICAL (2,4,6,8 & 10) FLOOR STUDIO APARTMENTS

UNIT AREA	356 Sq. ft.
TERR/BAL AREA	77 Sq. ft.
TOTAL AREA	433 Sq. ft.
UNITS	202,402,602,802 & 1002

Disclaimer: all pictures, plans, layouts, information, data and details included in this brochure are indicative only and may change at any time up to the final 'as built' status in accordance with the final designs of the project, regulatory approvals and planning permissions.



ARLINGTON PARK



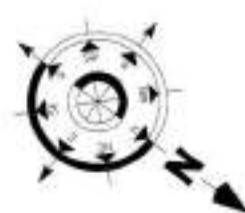
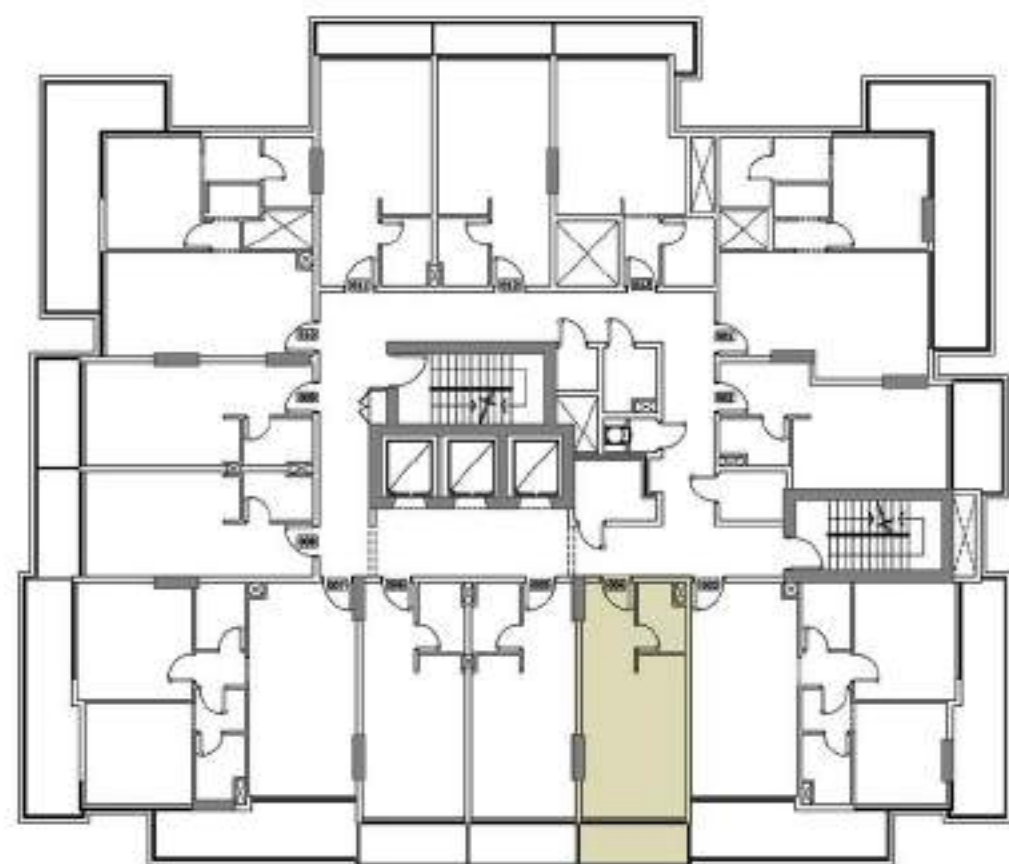
TYPICAL (2,4,6,8 & 10) FLOOR 2 BEDROOM APARTMENTS

UNIT AREA	809 Sq. ft.
TERR/BAL AREA	312 Sq. ft.
TOTAL AREA	1121 Sq. ft.
UNITS	203,403,603,803 & 1003

Disclaimer: all pictures, plans, layouts, information, data and details included in this brochure are indicative only and may change at any time up to the final 'as built' status in accordance with the final designs of the project, regulatory approvals and planning permissions.



ARLINGTON PARK



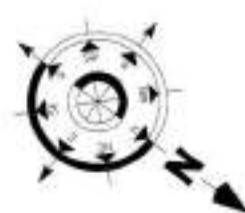
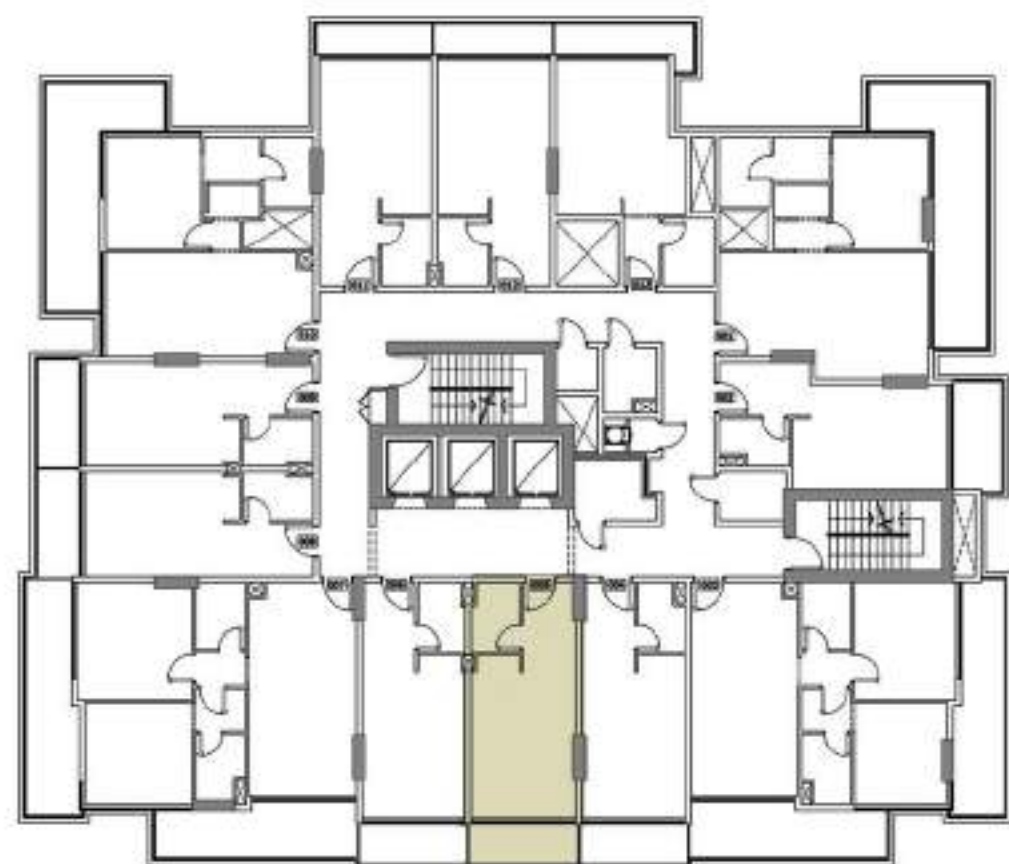
TYPICAL (2,4,6,8 & 10) FLOOR STUDIO APARTMENTS

UNIT AREA	356 Sq. ft.
TERR/BAL AREA	64 Sq. ft.
TOTAL AREA	420 Sq. ft.
UNITS	204,404,604,804 & 1004

Disclaimer: all pictures, plans, layouts, information, data and details included in this brochure are indicative only and may change at any time up to the final 'as built' status in accordance with the final designs of the project, regulatory approvals and planning permissions.



ARLINGTON PARK



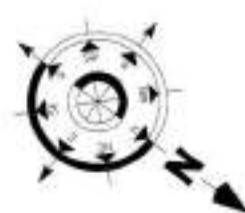
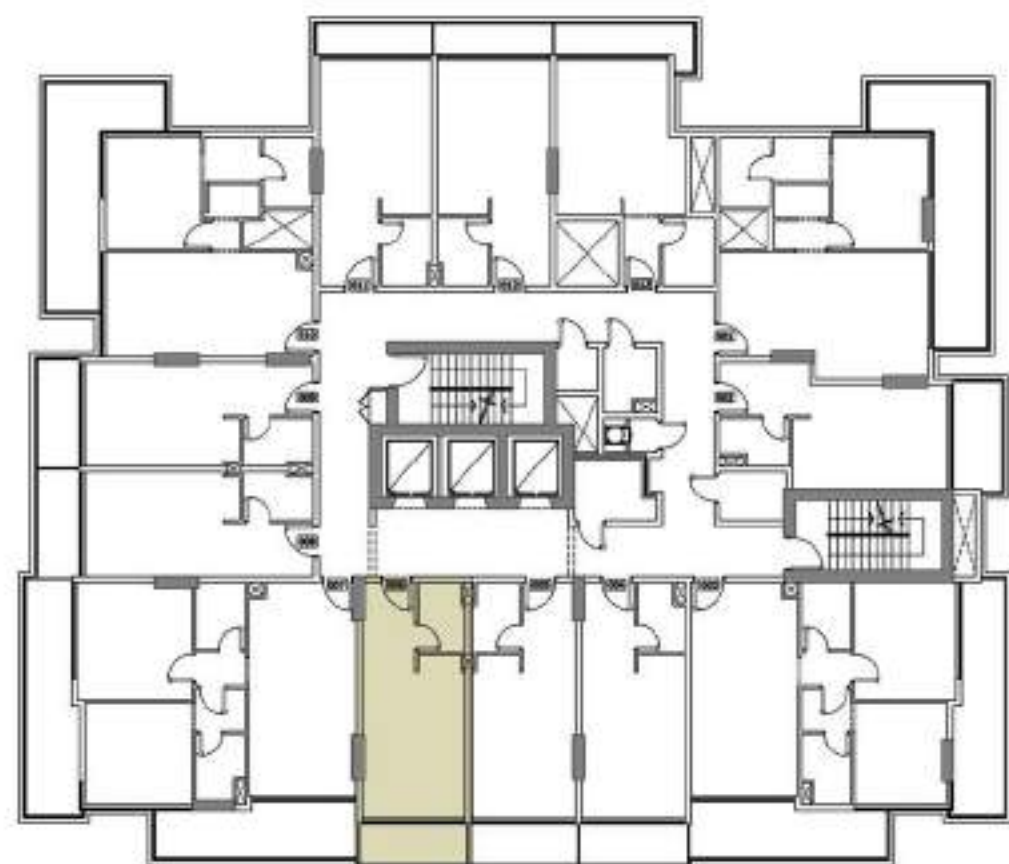
TYPICAL (2,4,6,8 & 10) FLOOR STUDIO APARTMENTS

UNIT AREA	357 Sq. ft.
TERR/BAL AREA	64 Sq. ft.
TOTAL AREA	421 Sq. ft.
UNITS	205,405,605,805 & 1005

Disclaimer: all pictures, plans, layouts, information, data and details included in this brochure are indicative only and may change at any time up to the final 'as built' status in accordance with the final designs of the project, regulatory approvals and planning permissions.



ARLINGTON PARK



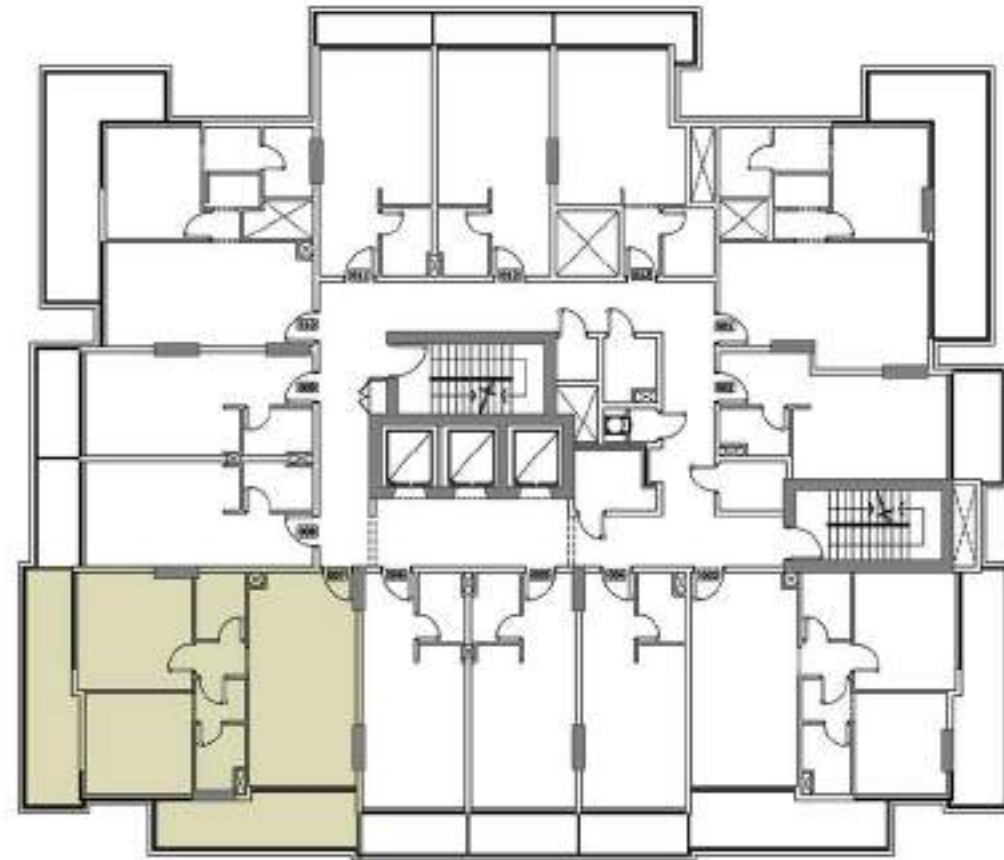
TYPICAL (2,4,6,8 & 10) FLOOR STUDIO APARTMENTS

UNIT AREA	357 Sq. ft.
TERR/BAL AREA	64 Sq. ft.
TOTAL AREA	421 Sq. ft.
UNITS	206,406,606,806 & 1006

Disclaimer: all pictures, plans, layouts, information, data and details included in this brochure are indicative only and may change at any time up to the final 'as built' status in accordance with the final designs of the project, regulatory approvals and planning permissions.



ARLINGTON PARK



TYPICAL (2,4,6,8 & 10) FLOOR 2 BEDROOM APARTMENTS

UNIT AREA 847 Sq. ft.

TERR/BAL AREA 325 Sq. ft.

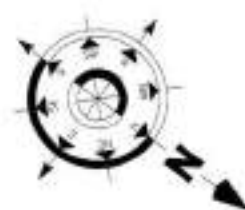
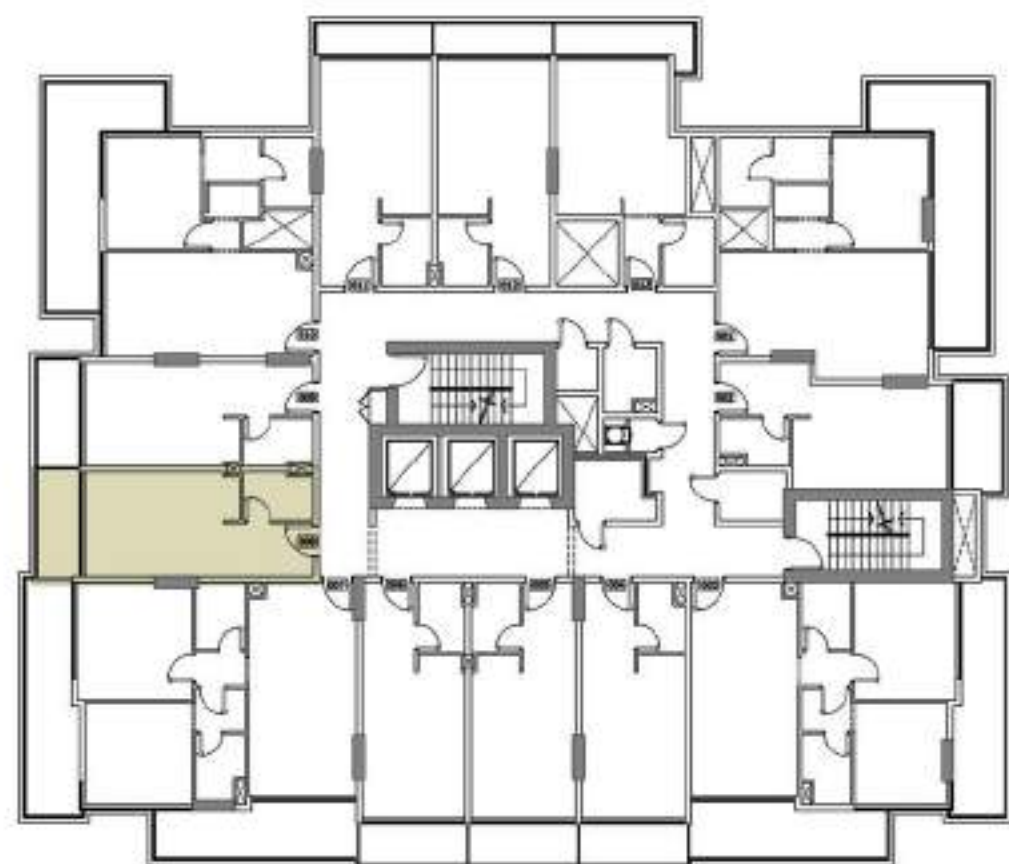
TOTAL AREA 1172 Sq. ft.

UNITS 207,407,607,807 & 1007

Disclaimer: all pictures, plans, layouts, information, data and details included in this brochure are indicative only and may change at any time up to the final 'as built' status in accordance with the final designs of the project, regulatory approvals and planning permissions.



ARLINGTON PARK



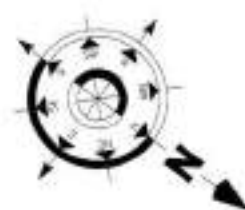
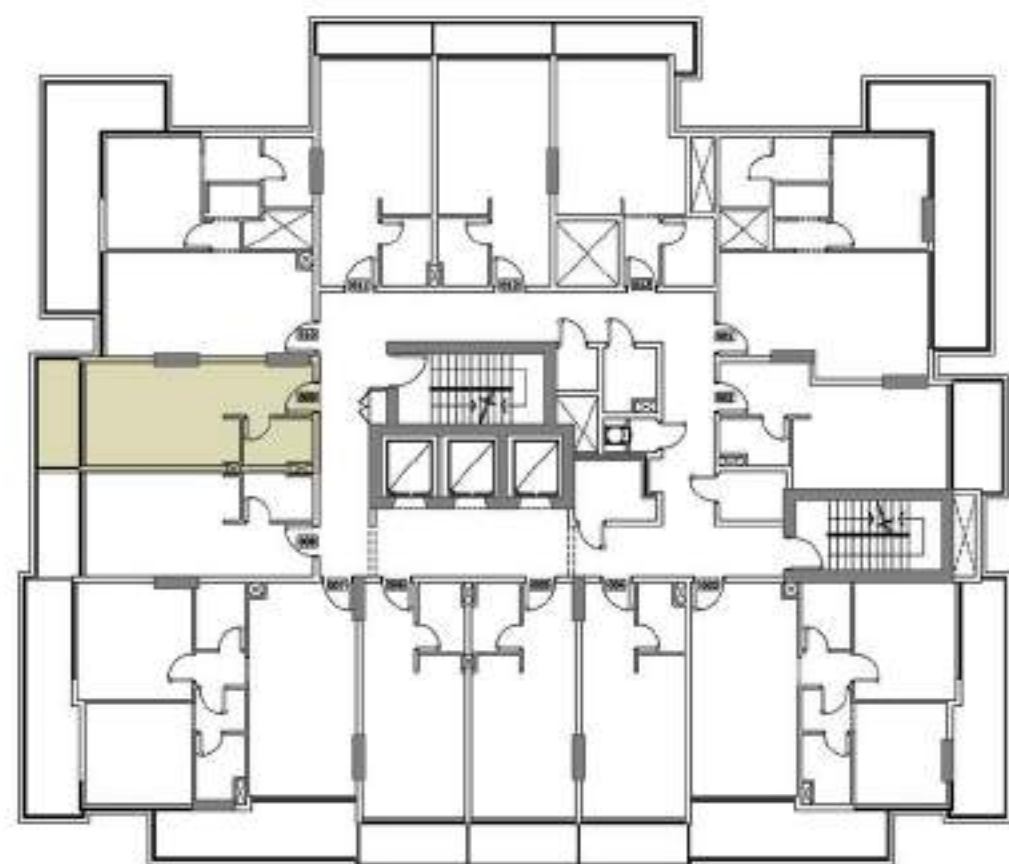
TYPICAL (2,4,6,8 & 10) FLOOR STUDIO APARTMENTS



UNIT AREA	345 Sq. ft.
TERR/BAL AREA	68 Sq. ft.
TOTAL AREA	413 Sq. ft.
UNITS	208,408,608,808 & 1008

Disclaimer: all pictures, plans, layouts, information, data and details included in this brochure are indicative only and may change at any time up to the final 'as built' status in accordance with the final designs of the project, regulatory approvals and planning permissions.

ARLINGTON PARK



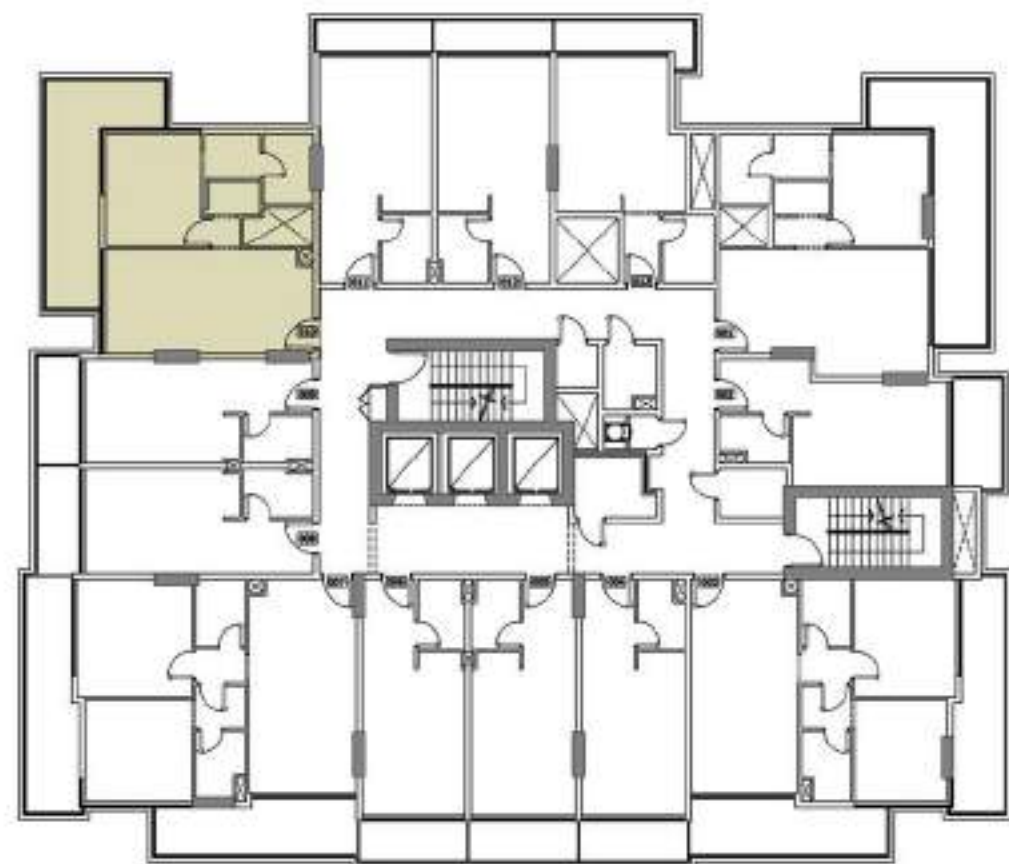
TYPICAL (2,4,6,8 & 10) FLOOR STUDIO APARTMENTS

UNIT AREA	345 Sq. ft.
TERR/BAL AREA	68 Sq. ft.
TOTAL AREA	413 Sq. ft.
UNITS	209,409,609,809 & 1009

Disclaimer: all pictures, plans, layouts, information, data and details included in this brochure are indicative only and may change at any time up to the final 'as built' status in accordance with the final designs of the project, regulatory approvals and planning permissions.



ARLINGTON PARK



TYPICAL (2,4,6,8 & 10) FLOOR 1 BEDROOM APARTMENTS

UNIT AREA 610 Sq. ft.

TERR/BAL AREA 221 Sq. ft.

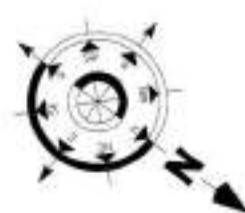
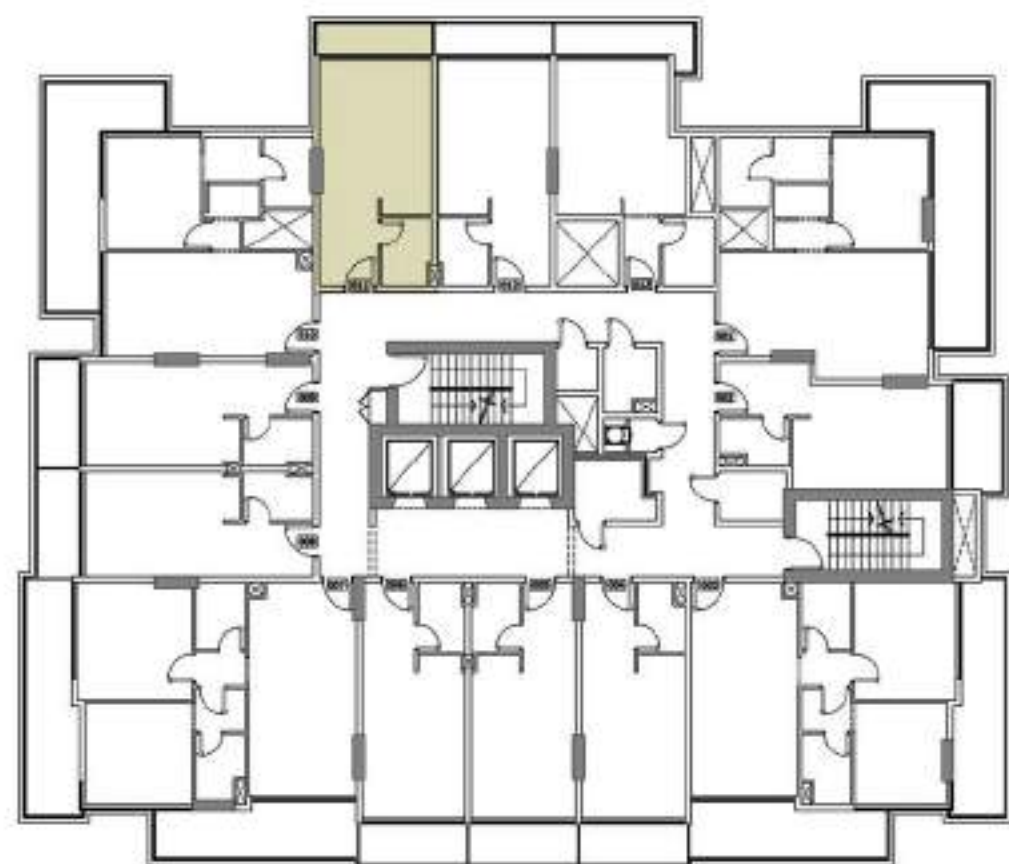
TOTAL AREA 831 Sq. ft.

UNITS 210,410,610,810 & 1010

Disclaimer: all pictures, plans, layouts, information, data and details included in this brochure are indicative only and may change at any time up to the final 'as built' status in accordance with the final designs of the project, regulatory approvals and planning permissions.



ARLINGTON PARK



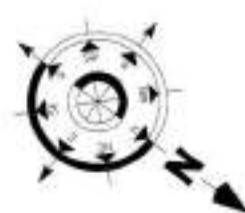
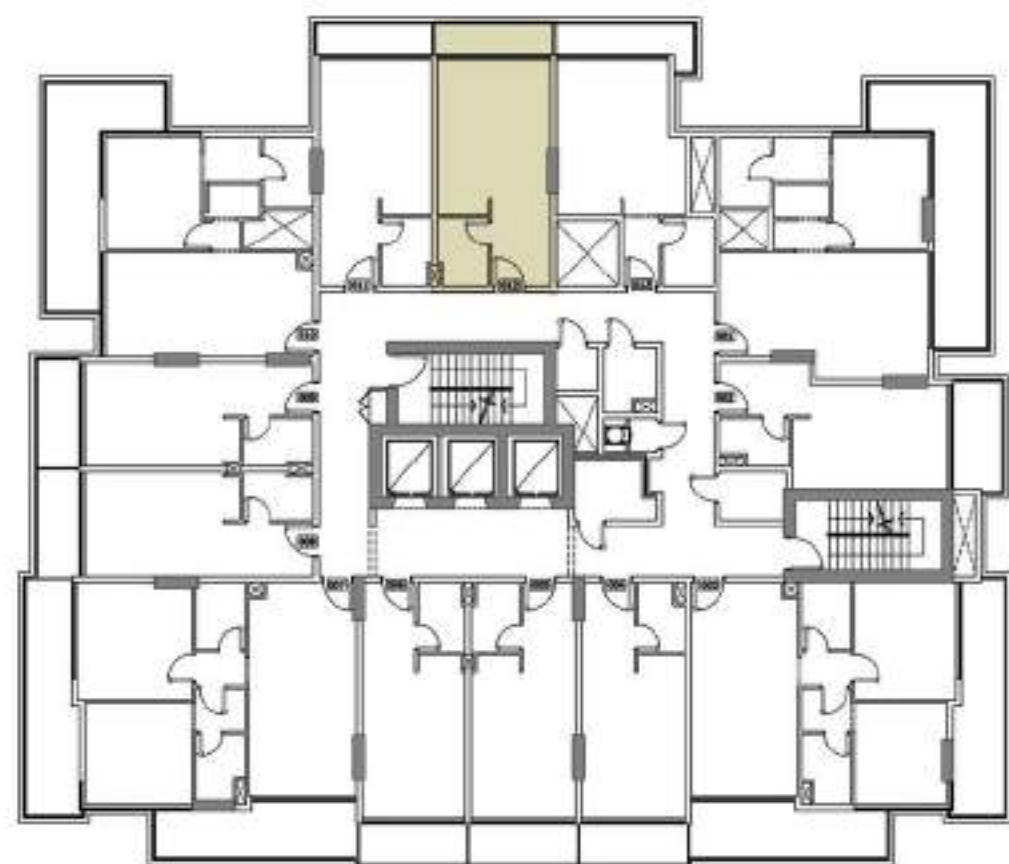
TYPICAL (2,4,6,8 & 10) FLOOR STUDIO APARTMENTS

UNIT AREA	369 Sq. ft.
TERR/BAL AREA	55 Sq. ft.
TOTAL AREA	424 Sq. ft.
UNITS	211,411,611,811 & 1011

Disclaimer: all pictures, plans, layouts, information, data and details included in this brochure are indicative only and may change at any time up to the final 'as built' status in accordance with the final designs of the project, regulatory approvals and planning permissions.



ARLINGTON PARK



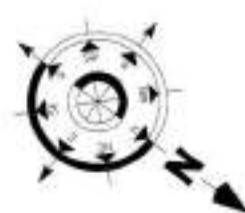
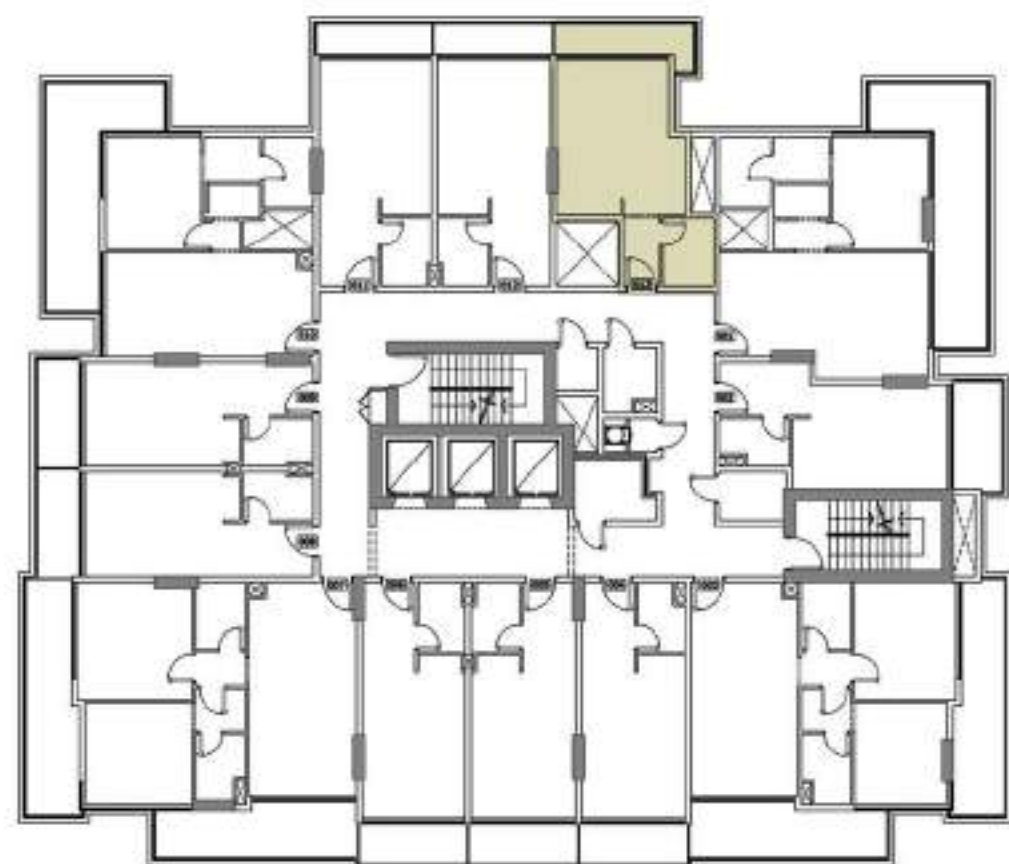
TYPICAL (2,4,6,8 & 10) FLOOR STUDIO APARTMENTS

UNIT AREA	369 Sq. ft.
TERR/BAL AREA	56 Sq. ft.
TOTAL AREA	425 Sq. ft.
UNITS	212,412,612,812 & 1012

Disclaimer: all pictures, plans, layouts, information, data and details included in this brochure are indicative only and may change at any time up to the final 'as built' status in accordance with the final designs of the project, regulatory approvals and planning permissions.



ARLINGTON PARK



TYPICAL (2,4,6,8 & 10) FLOOR STUDIO APARTMENTS

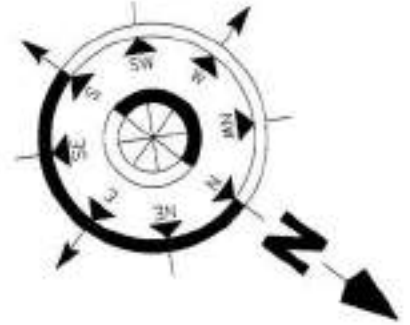
UNIT AREA	370 Sq. ft.
TERR/BAL AREA	71 Sq. ft.
TOTAL AREA	441 Sq. ft.
UNITS	213,413,613,813 & 1013

Disclaimer: all pictures, plans, layouts, information, data and details included in this brochure are indicative only and may change at any time up to the final 'as built' status in accordance with the final designs of the project, regulatory approvals and planning permissions.



ARLINGTON PARK

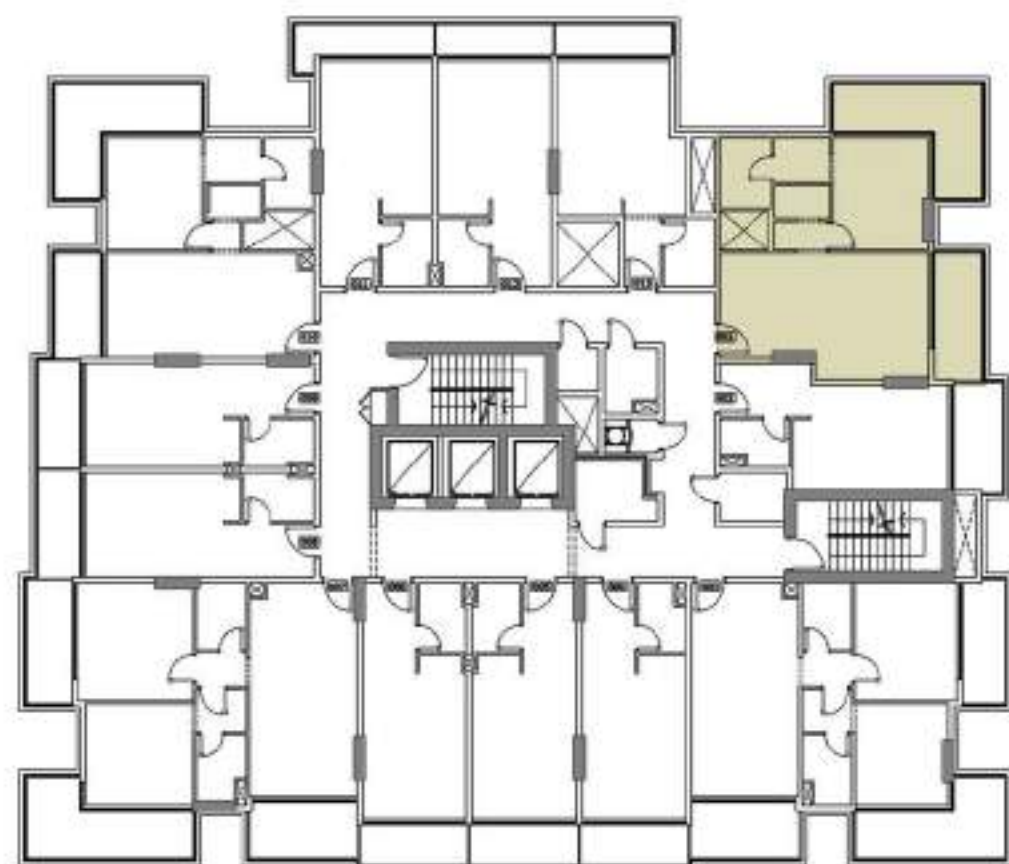
NEIGHBOUR 50.00M



TYPICAL FLOOR PLAN (3,5,7,9 & 11)

Disclaimer: all pictures, plans, layouts, information, data and details included in this brochure are indicative only and may change at any time up to the final 'as built' status in accordance with the final designs of the project, regulatory approvals and planning permissions.

ARLINGTON PARK



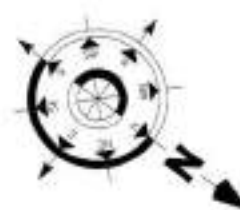
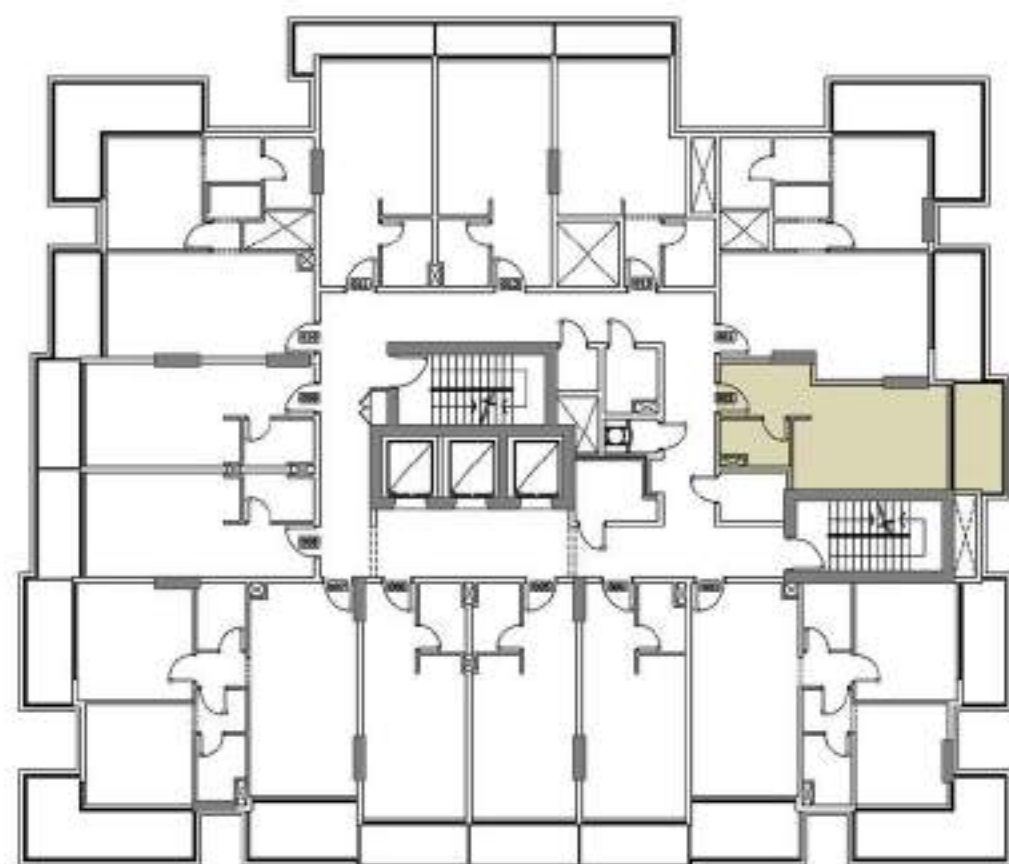
TYPICAL (3,5,7,9 & 11) FLOOR 1 BEDROOM APARTMENTS

UNIT AREA	660 Sq. ft.
TERR/BAL AREA	241 Sq. ft.
TOTAL AREA	901 Sq. ft.
UNITS	301,501,701,901 & 1101

Disclaimer: all pictures, plans, layouts, information, data and details included in this brochure are indicative only and may change at any time up to the final 'as built' status in accordance with the final designs of the project, regulatory approvals and planning permissions.



ARLINGTON PARK



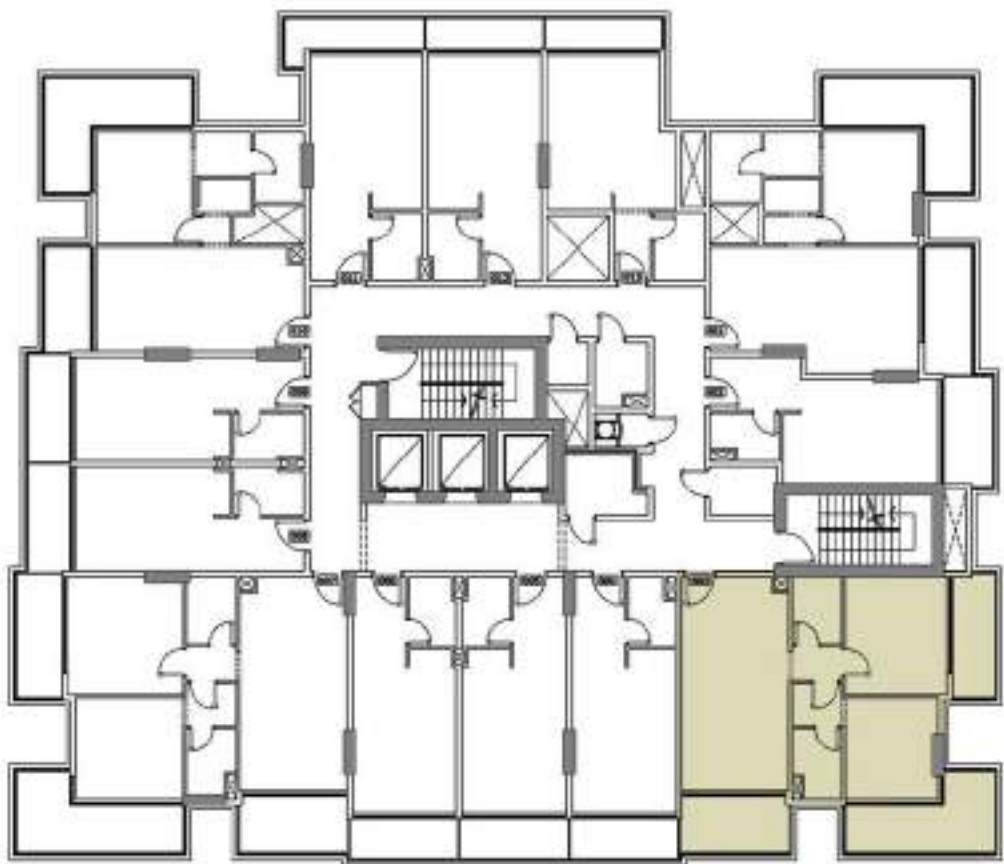
TYPICAL (3,5,7,9 & 11) FLOOR STUDIO APARTMENTS

UNIT AREA	356 Sq. ft.
TERR/BAL AREA	77 Sq. ft.
TOTAL AREA	433 Sq. ft.
UNITS	302,502,702,902 & 1102

Disclaimer: all pictures, plans, layouts, information, data and details included in this brochure are indicative only and may change at any time up to the final 'as built' status in accordance with the final designs of the project, regulatory approvals and planning permissions.



ARLINGTON PARK



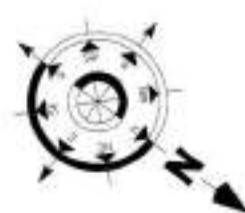
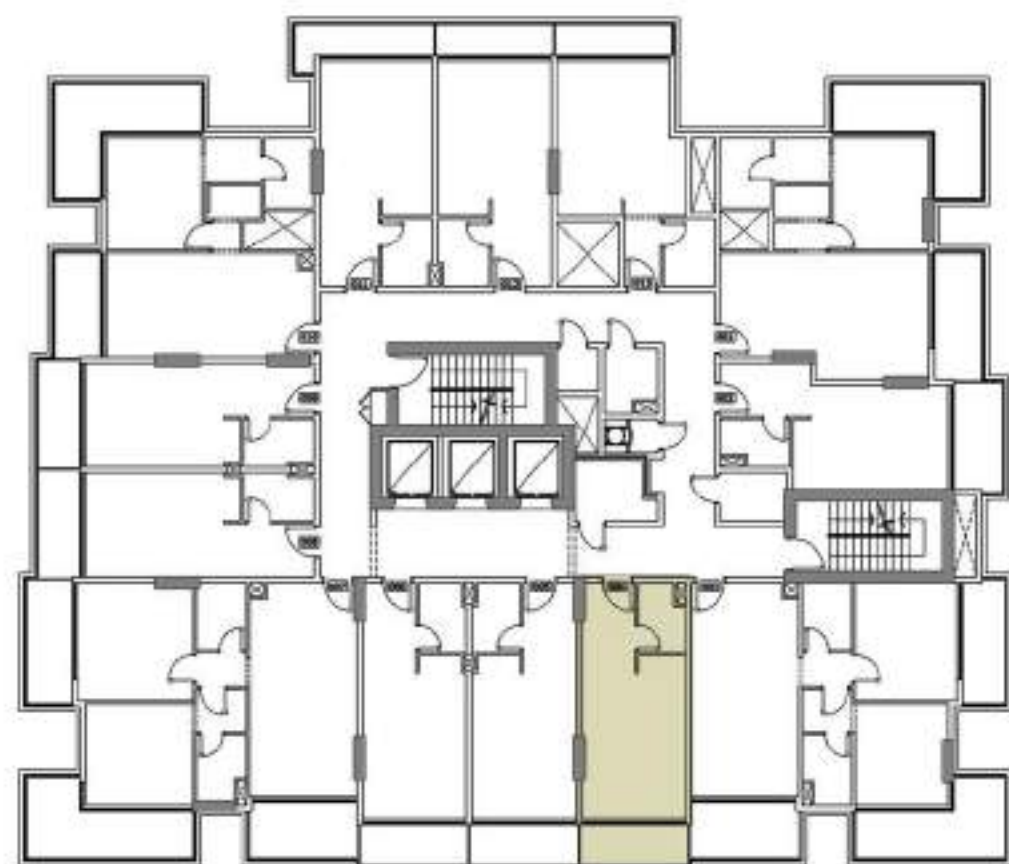
TYPICAL (3,5,7,9 & 11) FLOOR 2 BEDROOM APARTMENTS

UNIT AREA	809 Sq. ft.
TERR/BAL AREA	295 Sq. ft.
TOTAL AREA	1104 Sq. ft.
UNITS	303,503,703,903 & 1103

Disclaimer: all pictures, plans, layouts, information, data and details included in this brochure are indicative only and may change at any time up to the final 'as built' status in accordance with the final designs of the project, regulatory approvals and planning permissions.



ARLINGTON PARK



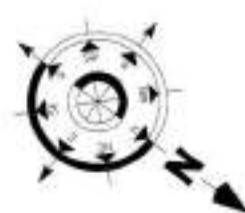
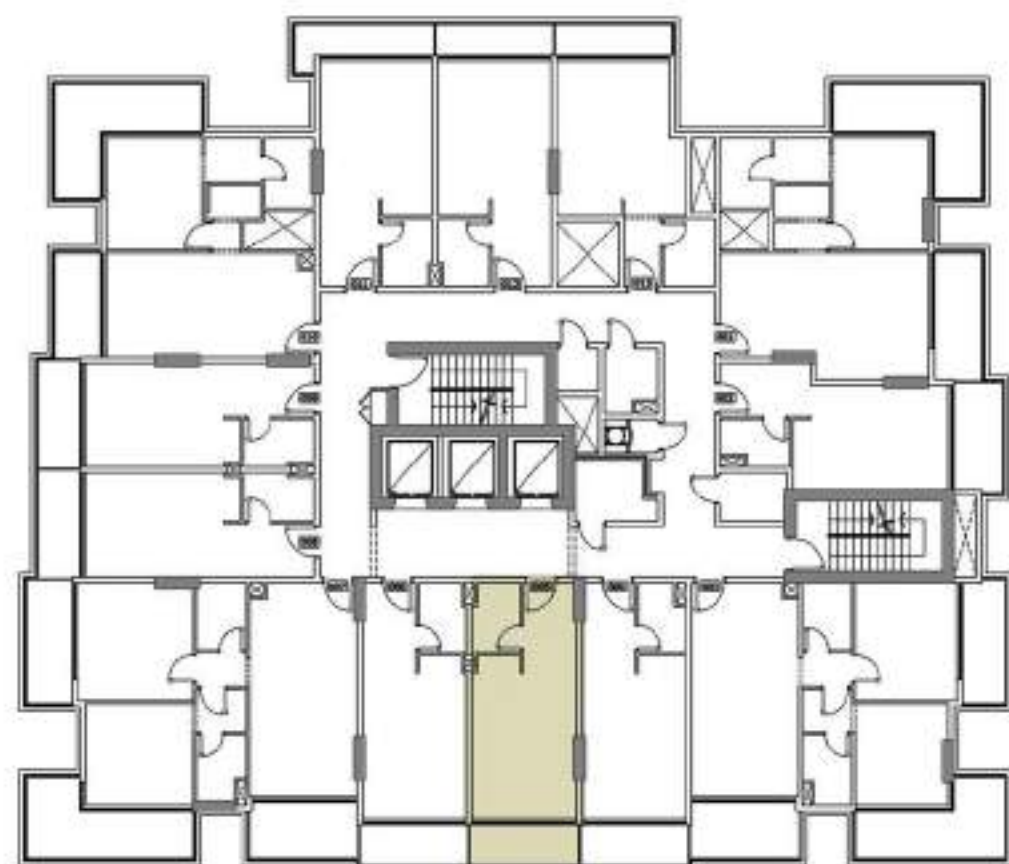
TYPICAL (3,5,7,9 & 11) FLOOR STUDIO APARTMENTS

UNIT AREA	356 Sq. ft.
TERR/BAL AREA	64 Sq. ft.
TOTAL AREA	420 Sq. ft.
UNITS	304,504,704,904 & 1104

Disclaimer: all pictures, plans, layouts, information, data and details included in this brochure are indicative only and may change at any time up to the final 'as built' status in accordance with the final designs of the project, regulatory approvals and planning permissions.



ARLINGTON PARK



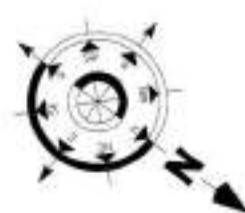
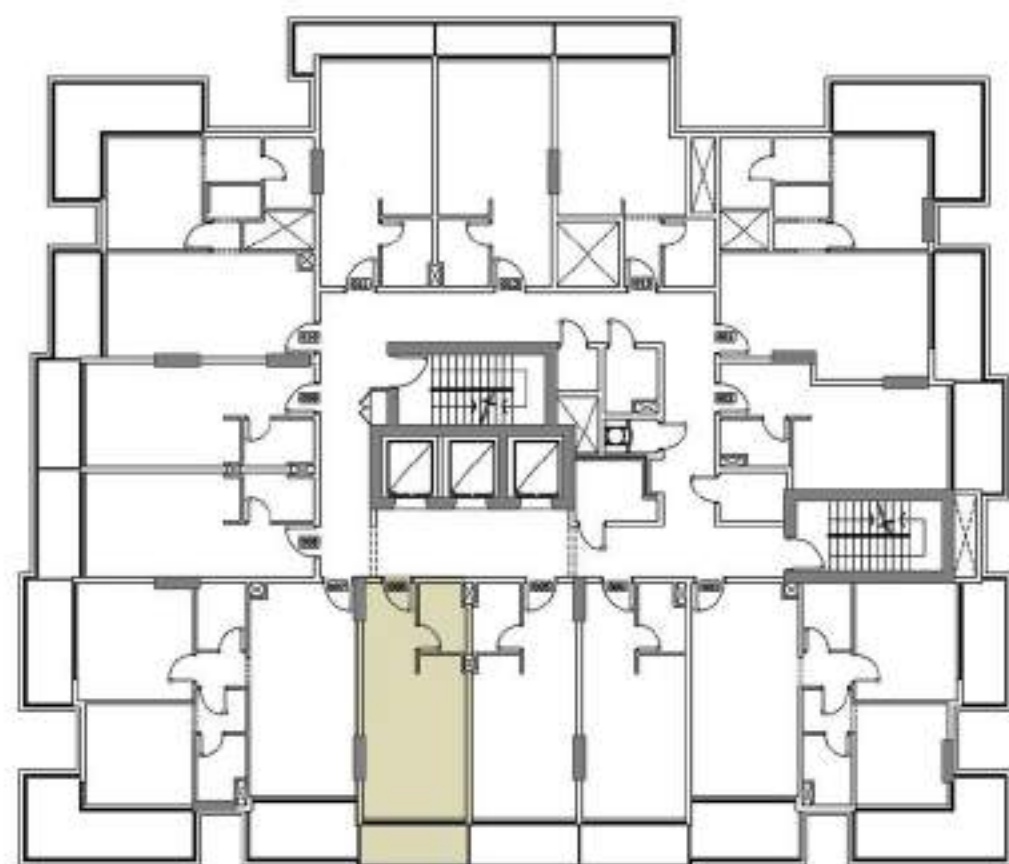
TYPICAL (3,5,7,9 & 11) FLOOR STUDIO APARTMENTS

UNIT AREA	357 Sq. ft.
TERR/BAL AREA	64 Sq. ft.
TOTAL AREA	421 Sq. ft.
UNITS	305,505,705,905 & 1105

Disclaimer: all pictures, plans, layouts, information, data and details included in this brochure are indicative only and may change at any time up to the final 'as built' status in accordance with the final designs of the project, regulatory approvals and planning permissions.



ARLINGTON PARK



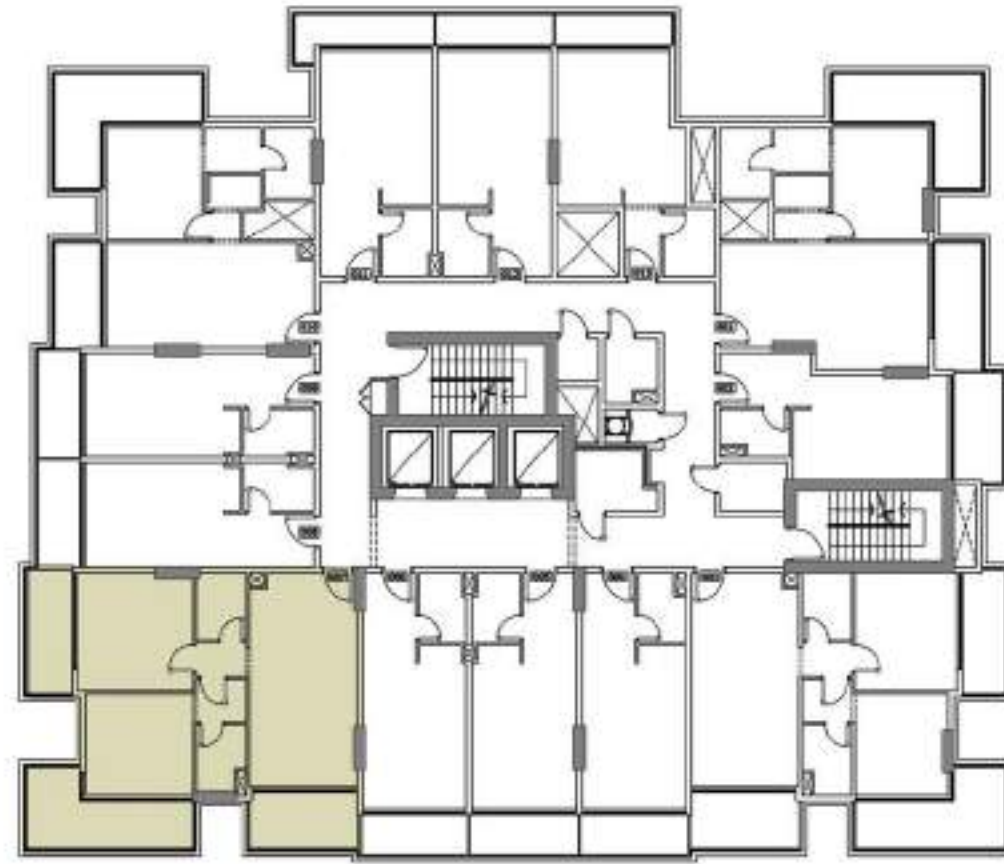
TYPICAL (3,5,7,9 & 11) FLOOR STUDIO APARTMENTS

UNIT AREA	357 Sq. ft.
TERR/BAL AREA	64 Sq. ft.
TOTAL AREA	421 Sq. ft.
UNITS	306,506,706,906 & 1106

Disclaimer: all pictures, plans, layouts, information, data and details included in this brochure are indicative only and may change at any time up to the final 'as built' status in accordance with the final designs of the project, regulatory approvals and planning permissions.



ARLINGTON PARK



TYPICAL (3,5,7,9 & 11) FLOOR 2 BEDROOM APARTMENTS

UNIT AREA 847 Sq. ft.

TERR/BAL AREA 313 Sq. ft.

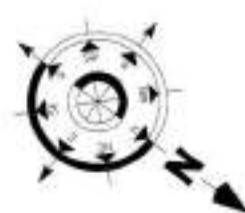
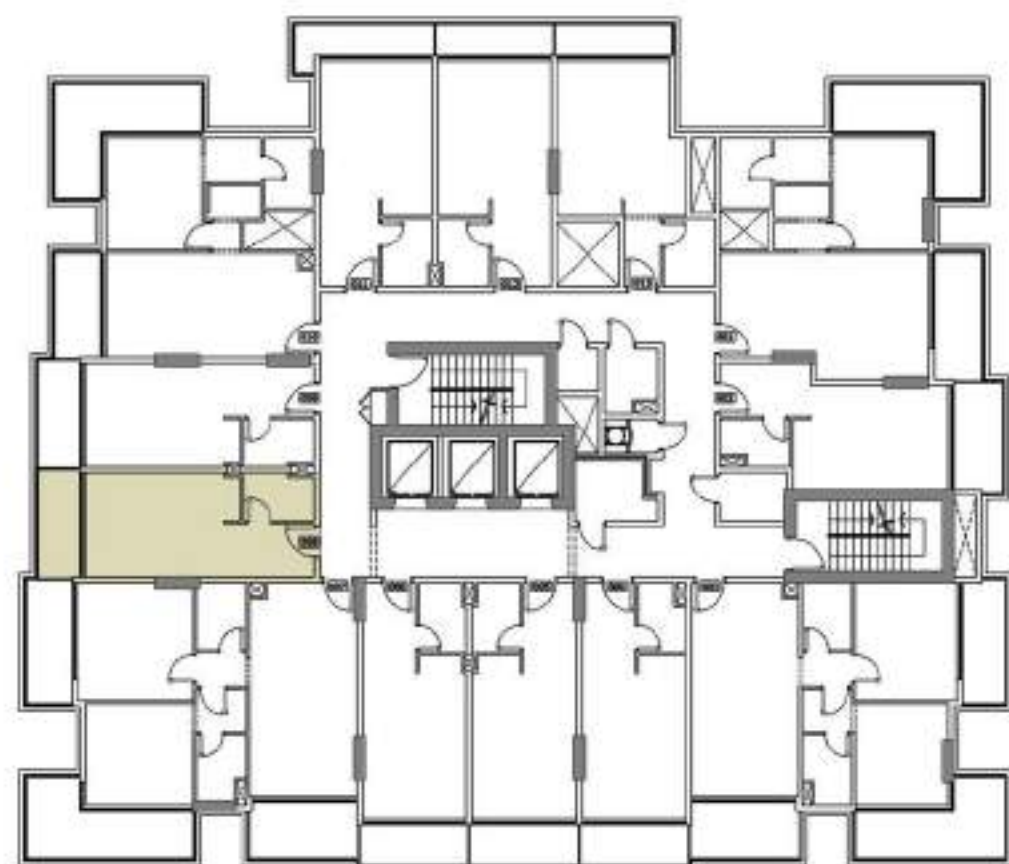
TOTAL AREA 1160 Sq. ft.

UNITS 307,507,707,907 & 1107

Disclaimer: all pictures, plans, layouts, information, data and details included in this brochure are indicative only and may change at any time up to the final 'as built' status in accordance with the final designs of the project, regulatory approvals and planning permissions.



ARLINGTON PARK



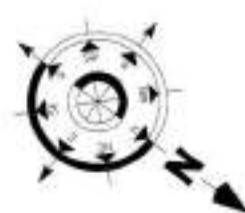
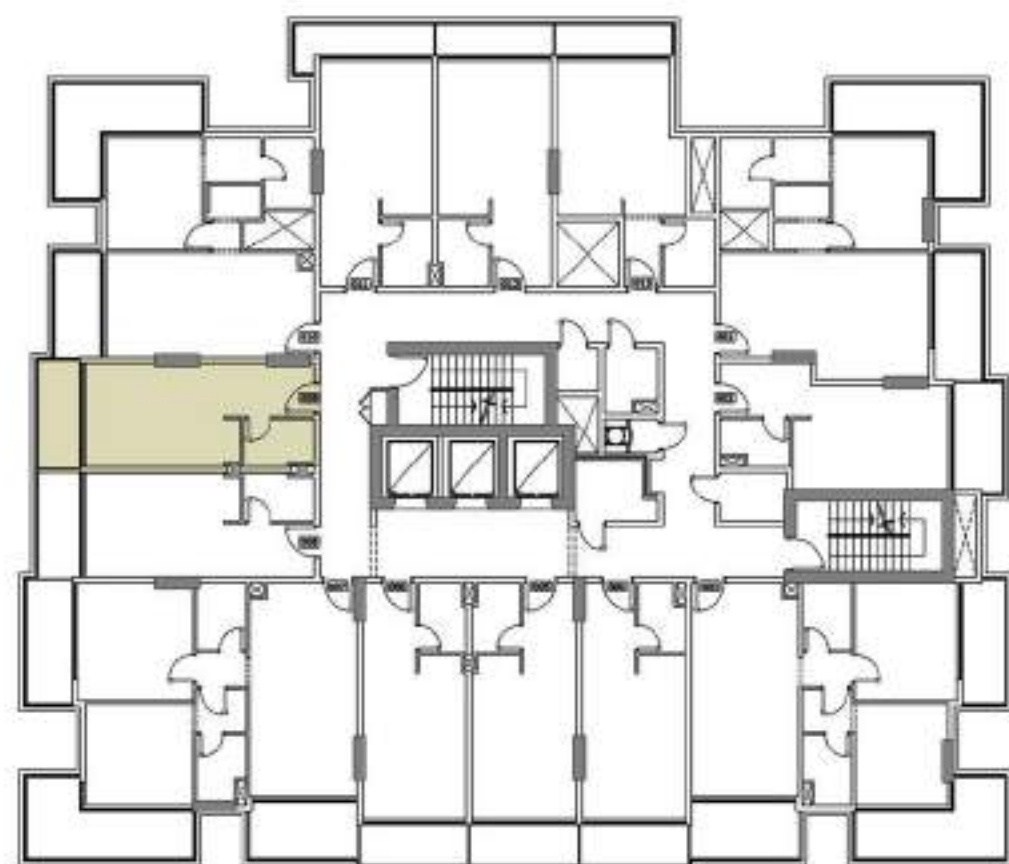
TYPICAL (3,5,7,9 & 11) FLOOR STUDIO APARTMENTS

UNIT AREA	345 Sq. ft.
TERR/BAL AREA	68 Sq. ft.
TOTAL AREA	413 Sq. ft.
UNITS	308,508,708,908 & 1108

Disclaimer: all pictures, plans, layouts, information, data and details included in this brochure are indicative only and may change at any time up to the final 'as built' status in accordance with the final designs of the project, regulatory approvals and planning permissions.



ARLINGTON PARK



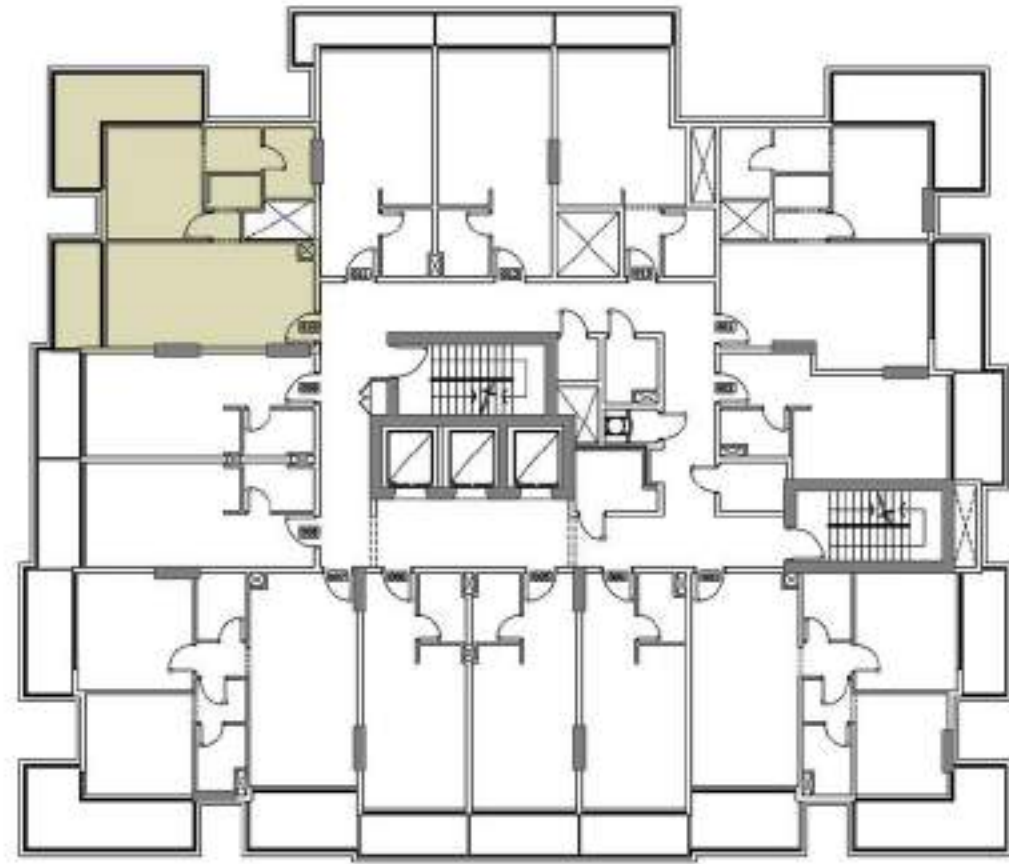
TYPICAL (3,5,7,9 & 11) FLOOR STUDIO APARTMENTS

UNIT AREA	345 Sq. ft.
TERR/BAL AREA	68 Sq. ft.
TOTAL AREA	413 Sq. ft.
UNITS	309,509,709,909 & 1109

Disclaimer: all pictures, plans, layouts, information, data and details included in this brochure are indicative only and may change at any time up to the final 'as built' status in accordance with the final designs of the project, regulatory approvals and planning permissions.



ARLINGTON PARK



TYPICAL (3,5,7,9 & 11) FLOOR 1 BEDROOM APARTMENTS

UNIT AREA 610 Sq. ft.

TERR/BAL AREA 216 Sq. ft.

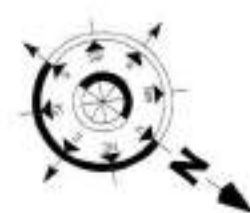
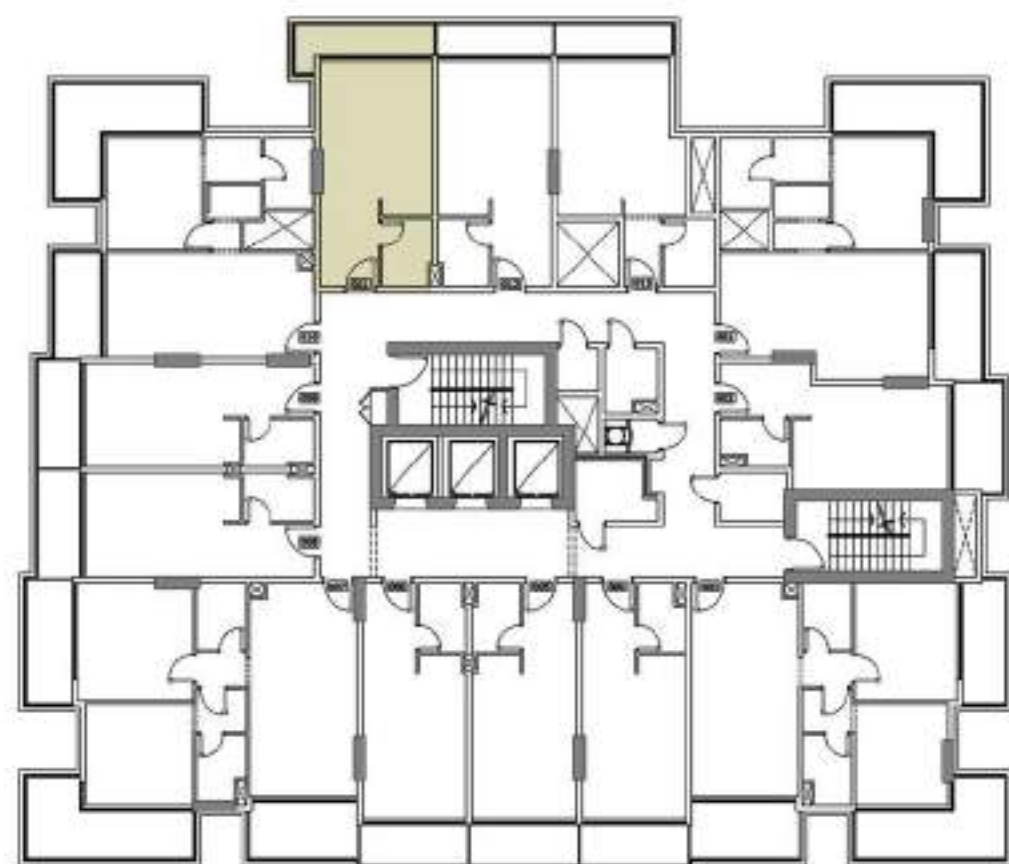
TOTAL AREA 826 Sq. ft.

UNITS 310,510,710,910 & 1110

Disclaimer: all pictures, plans, layouts, information, data and details included in this brochure are indicative only and may change at any time up to the final 'as built' status in accordance with the final designs of the project, regulatory approvals and planning permissions.



ARLINGTON PARK



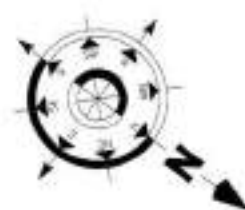
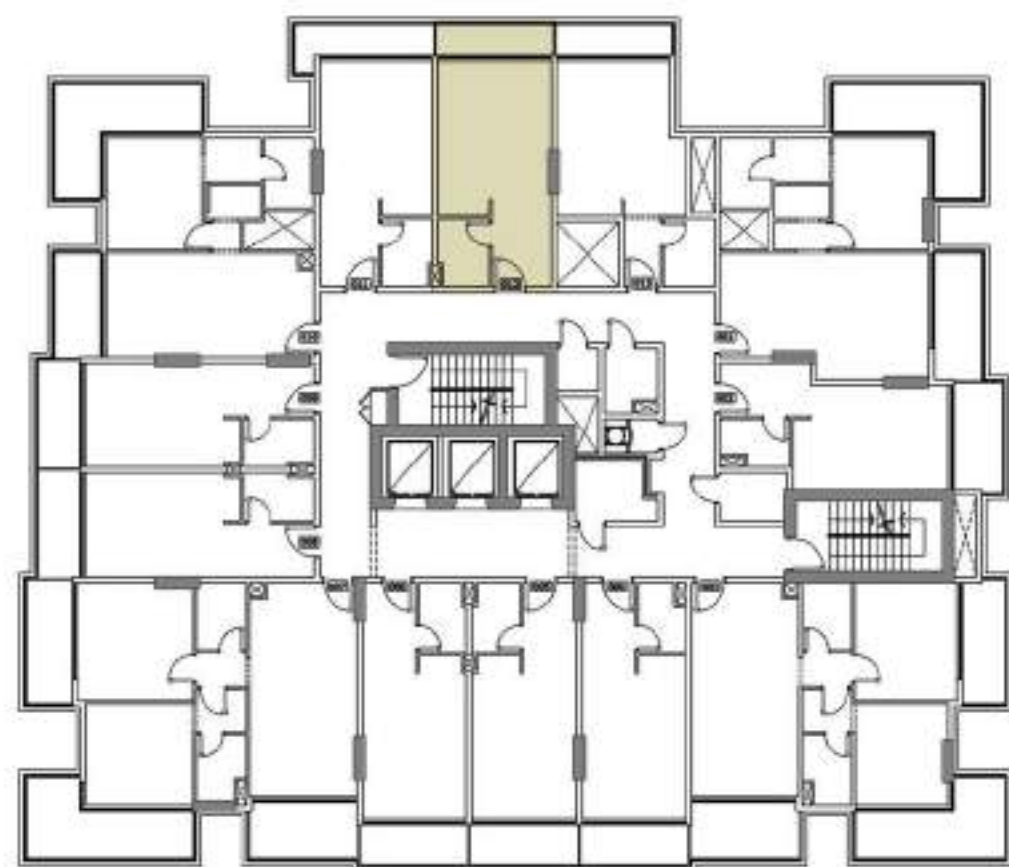
TYPICAL (3,5,7,9 & 11) FLOOR STUDIO APARTMENTS

UNIT AREA	369 Sq. ft.
TERR/BAL AREA	71 Sq. ft.
TOTAL AREA	440 Sq. ft.
UNITS	311,511,711,911 & 1111

Disclaimer: all pictures, plans, layouts, information, data and details included in this brochure are indicative only and may change at any time up to the final 'as built' status in accordance with the final designs of the project, regulatory approvals and planning permissions.



ARLINGTON PARK



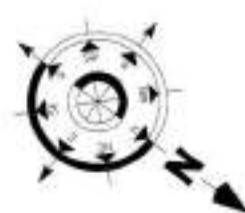
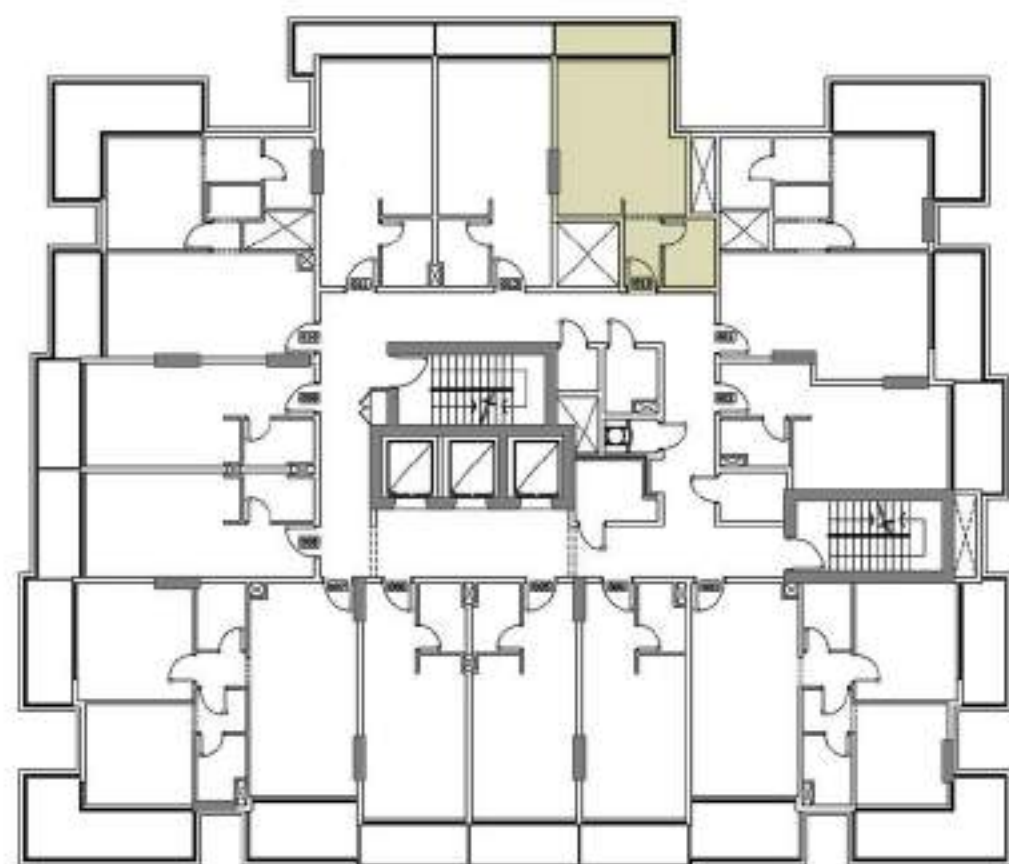
TYPICAL (3,5,7,9 & 11) FLOOR STUDIO APARTMENTS

UNIT AREA	369 Sq. ft.
TERR/BAL AREA	55 Sq. ft.
TOTAL AREA	424 Sq. ft.
UNITS	312,512,712,912 & 1112

Disclaimer: all pictures, plans, layouts, information, data and details included in this brochure are indicative only and may change at any time up to the final 'as built' status in accordance with the final designs of the project, regulatory approvals and planning permissions.



ARLINGTON PARK



TYPICAL (3,5,7,9 & 11) FLOOR STUDIO APARTMENTS

UNIT AREA	370 Sq. ft.
TERR/BAL AREA	56 Sq. ft.
TOTAL AREA	426 Sq. ft.
UNITS	313,513,713,913 & 1113

Disclaimer: all pictures, plans, layouts, information, data and details included in this brochure are indicative only and may change at any time up to the final 'as built' status in accordance with the final designs of the project, regulatory approvals and planning permissions.





MAJID

ARLINGTON
PARK

ARLINGTON
PARK

BUILDING FACT SHEET

Building Configuration: 2B + G + 11 + R

Key Views: Community & Park View

Total Units: 140 Apartments

Unit Mix: 96 Studios, 22 One-Bedroom, 22 Two-Bedroom

Studio Sizes: 413 sqft - 441 sqft

1 Bedroom Sizes: 826 sqft - 901 sqft

2 Bedroom Sizes: 1101 sqft - 1172 sqft

Furnishing: Fully Furnished

Service Charges: 13 - 15 AED PSF

Ownership: Freehold

Location: Dubai Land Residence Complex

Handover: Q4 2027



PAYMENT PLAN

OPTION 1 – 65/35 POST-HANDOVER PLAN

TOTAL POST-HANDOVER DURATION: 36 MONTHS

DOWN PAYMENT + DLD	20 + 4%
After 6 Months	7.5%
After 12 Months	7.5%
After 18 Months	7.5%
After 24 Months	7.5%
After 30 Months	10%
On Handover (Q4 2027)	5%
Post-Handover (36 mos)	35%



PAYMENT PLAN

OPTION 2 – 60/40 PAYMENT PLAN

BOOKING + 4% DLD	20 + 4%
After 6 Months	7.5%
After 12 Months	7.5%
After 18 Months	7.5%
After 24 Months	7.5%
After 30 Months	10%
On Handover (Q4 2027)	40%



MAJID[®]

DEVELOPMENTS

SHAPING LUXURY LIVING, INNOVATING SUSTAINABLE FUTURES

Majid Developments is a visionary real estate development company based in Dubai. Our mission is to redefine luxury living by delivering high-end, meticulously designed properties to our discerning clientele. We focus on creating distinguished lifestyle experiences that reflect our clients' high expectations and aspirations. Our dedication to quality, precision, and style is evident in every project we undertake.

KEY HIGHLIGHTS:

Visionary Leadership: Guided by a commitment to excellence and innovation.

Meticulous Design: Every project showcases our attention to detail and quality.

Client-Centric Approach: Tailoring experiences to meet the aspirations of our clientele.

Sustainable Development: Emphasizing environmentally responsible building practices.

ARLINGTON
PARK

MAJID[®]
DEVELOPMENTS

majiddevelopments.com